

WAYLAND
ACADEMY

Greetings



Annual Report 2010-2011

ANNUAL REPORT *of the* President

I am pleased to submit this summary report for the school year ending June 30, 2011, along with a few highlights regarding this current year.

While I am new to Wayland, I am not new to the important role schools like Wayland play in the education of our future leaders. I also know the importance of our generous donors' contributions to delivering outstanding opportunities for our students to learn and grow.

The Academy Fund, through the budgetary support it provides, allows Wayland to provide a college preparatory program unmatched in the Midwest. We often say that the financial support generated by the fund provides the "Margin of Excellence" that Wayland students are fortunate to receive.

This report provides a glimpse of all that goes on at the Academy today and recognizes those who helped create the outstanding educational and extra-curricular opportunities our students enjoy. It also serves as a testament to the dedication, commitment, and passion of our alumni, parents, and friends.

We hope you enjoy reading a little bit about what we are doing. Most importantly,

Thank You for all you do for Wayland.



New Faculty and Staff



Amy Bembenek, Executive Assistant to the President

Andrew Borneman, English

Stephanie Carpenter, Student Life Intern

Gerry Cumpiano '06, Development Office Intern

Academic Highlights

Some academic highlights include:

- Enrollment in AP courses continues to be high, with 78 students enrolled in 13 courses.
- Three members of the class of 2012 were named Commended Students by the National Merit Scholarship Corporation.
- AP scores from the May examination period showed that 70% of the scores were 3, 4, or 5. Scores of 3, 4, or 5 are considered passing; colleges and universities use 3 as the minimum score for credit. (100% of our AP students take the exams.) The average score on all of the examinations taken was 3.3.

Commencement was once again the high point at the end of the year. Forty-nine members of the class of 2011 received diplomas in May. There were many success stories in the Class of 2011, and the seniors expressed their gratitude before leaving campus. Ten graduates were members of the Cum Laude Society.

Of the 49 graduates in the class of 2011, 48 chose to attend college or university this coming year; one graduate returned to Germany. The class of 2011 submitted 385 college applications. Some of the notable admissions were from Boston College, University of California

Berkeley, University of California Los Angeles, Carleton College, Carnegie Mellon University, Lehigh University, New York University, Pomona College, University of Rochester, Scripps College, and Smith College.

Most notable: David Rosas was chosen as a Questbridge Scholar through the National College Match Program. He was awarded admission and a full four-year scholarship to attend Pomona College in California. In addition to tuition, room, and board, David's scholarship also includes money for books, travel, personal expenses, required fees, and



David Rosas '11 recipient of the Edwin Putnam Brown Award and Megan Petersen '11 recipient of the Laura A. MacDonald Award. These are the top awards presented at Commencement.

health insurance (if needed). Last year, out of 5,830 applicants, 268 (or just under 5%) were awarded the scholarship. Pomona is one of the most selective schools in the country, with an overall acceptance rate of only 15% (more selective than Cornell and Berkeley).

Student Life

Student clubs have been active and engaged on campus. From the animal rights activism of Voiceless to the political debate planned by the Model UN, students are sharing their ideas and passions with the Wayland Community. Other clubs such as People Existing and Connecting Equally (PEACE), help to create an environment in which Wayland's unique diversity is celebrated. Still others, like the Quidditch Club and the "I Love Food" club, have provided some fun and unique activities for students.

Countless other on-and-off-campus events have helped students get to know one another this year. Some of the most notable bonding experiences for students were the class trips, held in early November. Each class had a completely different experience – from a water park to an improvisational workshop; from a create-your-own-television-show to a life-sized, interactive video game. The seniors enjoyed extended



Geoffrey Clark `12, Michelle Krueger `12, Selena Erdman `12, and Emma Petersen `12 on their senior overnight camping trip.

activities, with an overnight camping trip in Camp Lake, Wisconsin.

On November 11, all underclassmen participated in the annual community service Day of Caring. Students and faculty assisted numerous local community agencies with service projects. Some tasks included walking dogs at the Humane Society; tutoring in local schools; painting and cleanup efforts at places like the Seippel Homestead and our own Swan Library; and even organizing props and costumes for the Beaver Dam Area Community Theater. In the spring, all seniors will participate in their own Senior Service Day.

Overall, it has been a positive year so far. With strong student leadership, along with age-old traditions and fresh new ideas, the campus culture this year has been strong and supportive.



Brandi Mertig `14 and Leah Wahl `15 help clean up a Highway in Beaver Dam for the Day of Caring.

Admissions

The Admissions Office has had a successful year. For the current school year, we enrolled 67 new students from a wide range of backgrounds. In August, we opened with a total of 196 students from nine different states and nine foreign countries. This has led to tremendous diversity on our campus. While transitioning to a new school can be

difficult, the students have demonstrated their abilities and passions well through their contributions and achievements.

The goal of our office is to continue to diversify our community. To this end, we have travelled to Mexico, Colombia, Ecuador, Venezuela, Saudi Arabia, Kuwait, Qatar, Turkey, South Korea, China, and Japan. In addition, we have made efforts to recruit students from new markets in the United States. While all of this has happened, we continue to place an emphasis on the Midwestern communities that make up the majority of our enrollment.

Finance

Wayland Academy experienced a year of mixed financial results as the economy's stagnation rippled into our enrollment and finances. Our 2010-2011 enrollment was down by ten students and our net tuition, fees, and services income was down nearly \$500,000 as compared to 2009-2010. Parents and students revisited the question: Does a private college

preparatory school have value? Most of them answered that it did have value as our gross tuition decreased by only 2.22%, but our students' financial need had increased as a result of the economy's impact on them. Wayland Academy responded by increasing our scholarships by 8.94%.

The school's management team, led by Interim President Joe Lennertz H'86, proactively responded by reducing spending without reducing any academic programs. Fortunately, through generous donations from many donors, our fundraising increased by more than \$49,000 as compared to last year. Through this combination of austerity and philanthropy, the net loss was reduced



Dean of Admissions Paul Keller received some recruiting help from Laura Bachman `10 and Estelle de Vendegies `10.

to a reasonable amount. Because financial stability is central to our mission of providing a successful private college prep educational experience to Wayland's students, some modifications will be made to enhance our financial aid process. This will permit tomorrow's leaders the ability to continue to grow and compete in our diverse community. The Board of Trustees will review our strategic plan to ensure our students' success by providing the best available resources to aid them in their development of Knowledge and Character.

Athletics

Wayland student athletes continued to demonstrate Knowledge and Character as they worked hard on the courts and fields of play throughout the year. There was good participation in the many opportunities offered during the afternoon athletic period. One new offering this past year was girls' ice hockey, as Wayland joined the Beaver Dam and Randolph High School co-op team, the first co-op venture for Wayland.

Another first for Wayland was the school's first swimmer to qualify for the WIAA state swim meet. In addition to this achievement, the swim team broke several long-standing school records, both on the boys' and girls' side of the board. Some of the records that tumbled had been in place since 1964 and 1970!

Anne Rauschert '11 made her mark in the Wayland record books by joining a small group of alumni who have scored more than 1,000 points in their Wayland basketball careers. Two other students, Haitham Mawari '13, and Mihai Schnell-Harrison '12, also made their mark on Wayland history as they embarked on a new video project, "Wayland Sports Today."



Alex Yoo '13



President Brian Cheek and Mike Egan '83 at the Portland Gathering, held September 20, 2011, at the University Club of Portland.

These videos, which are posted on the school's website, attempt to capture the Big Red spirit both on the fields and along the sidelines, as parents and fans loudly and proudly support our Wayland teams.

Development

Wayland alumni, parents, grandparents and friends contributed a total of \$1,169,727 (including gifts to *The Academy Fund*, The Wayland Hall Renovation Project, endowments, scholarships and other programmatic support) to the Academy in the 2010-2011 fiscal year.



Mick Maier '64,
Interim Director of Development

The Academy Fund, which provides annual unrestricted operating money, totaled \$771,072, easily surpassing the original goal of \$700,000. Wayland parents and grandparents played a major role in that regard by more than doubling their goal and providing a total of \$369,162 in unrestricted contributions.

Conclusion

Clearly our students are receiving a quality education and are prepared well for college and beyond. Your support is crucial in our ability to continue offering the education Wayland has offered for 156 years. With your ongoing support we will continue to graduate students who will carry on our tradition of leading with Knowledge and Character.

Once again, thank you for your generous support of the Academy.

Best regards,

Brian L. Cheek
President

All Alumni Reunion 2011



Wayland's Alumni could not have asked for a better fall Wisconsin Weekend for the All Alumni Reunion Weekend! Alumni began arriving around noon on Friday, October 7, allowing them time to walk around their alma mater to see what is new and what has remained the same from their days at Wayland. That evening all were invited to attend a reception at the President's House.

The All Alumni Meeting and Breakfast on Saturday morning was well attended. Trustee Chair Susan Peterson '63 gave everyone a warm welcome and thanked them for making this the best attended reunion since the Sesquicentennial. She asked, "How many of you were here when Ray Patterson was President and Headmaster? Also known as Radar Ray?" The room fell quiet and many hands were raised. She continued, "As you may already know, Ray Patterson '40 recently passed away. Mr. Patterson was

Wayland's Headmaster for 17 years – longer than most of our presidents – from 1953 to 1970, and he had an incredible impact on this school. As Headmaster, he had the foresight to purchase 33 acres from the Dodge County Fairgrounds, now known as the South Campus, doubling Wayland's footprint. He raised more than a million dollars – big money back then – to fund the construction of this dining hall and Kimberly Chapel ... before he left to manage the Milwaukee Bucks and the Houston Rockets." Last year, by unanimous vote of the Board of Trustees – Mr. Patterson was elected an Honorary Trustee and President Emeritus of Wayland Academy.

Susan had another sad update; a beloved faculty emeritus – Victor Sampon H'60, passed away in September at the age of 87. She recalled that, "Mr. Sampon was on the faculty for 27 years – before retiring in 1986. He was a skilled fencer, coaching Wayland students in

fencing. One of my classmates observed that Mr. Sampon always had a smile on his face as he walked around campus." She then went on to urge everyone to take a stroll around campus, visit the museum, and recall all the fond memories alumni have of their time spent at Wayland.

Then, lightening the mood, Susan invited all members of the classes of 1961 and 1986 to join her at the front of the room so they could be recognized for their 50th and 25th reunions respectively. The class of 1956 was also honored because of their large turnout. All were given commemorative Alumni Reunion pins. Wayland's President Brian Cheek followed with a State of the Academy address, and ended with an explanation of how attending the memorial for Ray Patterson, Jr. '40 left him inspired. Then he said that "he hopes to bring the same success to Wayland that the school saw during the Patterson years."



Trustee Chair Susan Peterson '63 recognized the 25th and 50th Reunion Classes at the Saturday morning Brunch and Alumni Meeting.

Following the alumni group photo on the steps of Wayland Hall, a dedication ceremony took place to honor two of Wayland's baseball players who went on to play in the major leagues. Emerson "Pink" Hawley, class of 1891, and Adrian "Addie" Joss, class of 1898, now have monuments placed in their honor on the Kris Boucher H'90 Baseball Field, on South Campus. Pink pitched for the St. Louis Browns, the Pirates, Reds and Giants in the National League. His best season was in 1895 with the Pirates: he won 31 games and batted .308. Addie Joss made his major league career with the Cleveland Blues on April 26, 1902. His career featured four consecutive seasons with at least



Linda Esten H'11 received an Honorary Wayland Degree at the Reunion.

everyone enjoyed a fine dinner while socializing with other alumni, friends, and current and former faculty.

Honorary Diploma Recipient

When dessert was served, all were welcomed by President Brian Cheek, who then introduced Trustee Chair Susan Peterson '63. Susan stated that, "One of my favorite things about being Chair is being able to recognize wonderful people, often good friends, who have helped to make Wayland a great school. This couldn't apply more than to the recipient of tonight's Wayland Honorary Degree: Linda Spaans Esten.

"I have personally witnessed how Linda Esten has sacrificed much for the Academy. Yes, she was the wife of our last president, Robert Esten '64, but she also served the Academy in many more ways. One example: she is the mother of an alumnus – Jordan Esten class of 2002. As every parent knows, it's difficult to 'let go,' but when Jordan left home to attend Wayland as a boarding student, Linda knew he was leaving for a good reason – to get the best education the Midwest has to offer.

"When Bob became President of Wayland Academy, after many years as a Trustee and a Trustee

Chair, Linda jumped into her role as 'First Lady' of the Academy with great enthusiasm. She put her heart and soul into her role as hostess for various school functions." Susan came to know Linda well during the three years of preparation for Wayland's Sesquicentennial. "Let me tell you – the Academy was fortunate that Linda went to half-time with her job for the state as a nutritionist. If not for her, this spectacular event would not have been the tremendous success that it was. Her event planning skills went into overdrive! She helped plan the menus, organized multiple events both on and off campus. In fact, Linda was involved in so many ways that it's nearly impossible to list everything."

The All Alumni class photos, social hour and dinner were held Saturday evening at Beaver Dam's Old Hickory Country Club. Following the invocation by Trustee Dick Kimberly '54,

Chair, Linda jumped into her role as 'First Lady' of the Academy with great enthusiasm. She put her heart and soul into her role as hostess for various school functions." Susan came to know Linda well during the three years of preparation for Wayland's Sesquicentennial. "Let me tell you – the Academy was fortunate that Linda went to half-time with her job for the state as a nutritionist. If not for her, this spectacular event would not have been the tremendous success that it was. Her event planning skills went into overdrive! She helped plan the menus, organized multiple events both on and off campus. In fact, Linda was involved in so many ways that it's nearly impossible to list everything."

Soon after the Sesquicentennial, Linda became a full-time Wayland employee working in the Development Office helping to organize various events. She was instrumental in the design and decorating of Wayland Hall prior to, during and after its renovation. Susan said, "Although the Academy misses her presence, it's clear that Linda has left an indelible mark on the school. So we are very proud to award her this honorary degree and welcome her as a member of the Wayland Class of 2011."



Trustee Mike VanHaren '82 received Wayland's prestigious Volunteer of the Year Award.



The Class of 1956 – 1st row (l-r): Helen Burton Schuckel, Janet Sharp Turner, B’rita Duce Sarwar, Teddi Kirkby Weil; 2nd row: Tucker McNamara, Johanna Karsten Fabke, Bob Barber, Elizabeth Esten Cross, Lewis Elin; 3rd row: Bud Schoen, Sudro Brown, Leslie Morris, Bob Chesi



The Class of 1961 – 1st row (l-r): Marilyn Rieckman Susek, Jay Miller Domecq, Nancy Ferguson Robinson, Joyce “Bama” Thacker Harlan, Cindy Hood Dugan, Judy Jensen Schwartzbaum, Carol Richter Schmidlin; 2nd row: Warren Zuehls, Jon Tempas, Jon Homuth, Budd Sprague, Pete Kaiser; 3rd row: David Erbstoerzer, John Williams, Jim Johnson, Craig Lindeke, Franz Backus

Linda thanked Susan, the Trustees, and Brian Cheek, and acknowledged Bob’s sister who was in attendance. She said, “I soon found out after I married Bob that I also married into the Wayland Family, and I had no idea how strongly I would come to feel about the Academy.” She said that although their time was cut short, “Bob is in a better place, likely

bantering with Walt Thiede `43 or Ray Patterson `40, and as a longtime fan of Apple and Mac computers, having a great time talking with Apple’s Co-founder, Steve Jobs.”

Volunteer of the Year

Wayland’s Volunteer of the Year Award is one of Wayland’s highest honors. It recognizes a person who

gives of themselves to others in major ways. Susan asked Trustee Mike VanHaren `82, to come up and receive the award. She said, “As you all probably know, Mike is one of the sons of Marilyn and Roger H 84 VanHaren – both former Wayland teachers. So we know that Mike had terrific role models when it comes to giving back to your community – and the value of volunteering. Mike has been a member of Wayland’s Alumni Board since 2003 and served as its President since 2008, until last month when he was elected to become a member of Wayland Academy’s Board of Trustees. We are honored to have him ‘on board.’ And believe it or not, he does have a day job – at Quad Graphics as a National Sales Director – Data Sales. At Quad Graphics, Mike volunteers at the company family picnics and is always offering to help coworkers with ‘projects.’ This frequently extends his workday.

“Mike coached his daughter Ella’s soccer team this past spring and he’s now the manager for the team – even creating a team website for them to check schedules and scores. And I understand Mike shares ‘t-ball tips’ with his son Nolan and supports his involvement in Cub Scouts. Last spring, Mike lent his support and creativity to Plowshares in Waukesha by designing a program for their annual fundraiser. Their mission is to ‘Make Peace Relevant to the World Around Us.’

“Over the years Mike has volunteered his time to Wayland in a variety of ways. He produced an interactive CD-ROM presentation titled ‘Prepare for Success.’ He’s helped with Habitat for Wayland, and even had several pieces of his artwork on display at Wayland’s Sesquicentennial art show. Mike also served as co-emcee, with his father Roger, at the Academy’s Spring Gala & Auction and helped lead the overhaul of Wayland’s website, giving valuable input and feedback. Through his commitment to Wayland, his family,



The Class of 1976 (and spouses) – From left: Debbie and Adrian `76 Mazar, Matthew `76 and Laura Songer, & Dale `76 and Rosemarie Luck



The Class of 1986 – 1st row (l-r): Brad Ellis, Joseph Lennertz H`86, Steve Jenkins; 2nd row: Nicole Neuser Burris, Art Wirtz, Jen Downey Wirtz, Scott Posnanski & Pleshette Hamb



The Class of 1971 – Wendy Wilson & Tom Platt



The Class of 2001 – 1st row (l-r): Martha Kesler H`08; 2nd row: Jeff Tait, Joshua Pogue & Mark Ohrtman



The Class of 1966 – Barb Lindeke

and his community, you can see that Mike is a very deserving recipient of this year's Alumni Volunteer of the Year Award."

Mike was taken by surprise by this honor, since the recipient of the award was kept secret. His first comments were "Now I know why my wife is here this weekend, and I now know how Curt Radford `73 felt last year when we did the same thing to him." He thanked everyone and said his children are already asking when they get to come to Wayland.

President Cheek concluded the event by thanking everyone for a wonderful weekend and the warm welcome he has received from the Wayland community.



The Class of 2006 – 1st row (l-r): Kana Idetsu, Ashley Pahl, Molly Doty, Megan Nehls & Jaqueline Johnson; 2nd row: Gerry Cumpiano, David Irving, Xerxes Okray, Levi Walton, Sam Radford & Omar Muammar

DONOR RECOGNITION

Thank you for your continued generous support of Wayland Academy. The Academy's ability to fulfill its mission of imparting knowledge to and developing character in its students largely depends upon the ongoing philanthropic support of alumni, parents, grandparents, faculty and friends.

It is with great gratitude that we present donor lists and gift information charts for the Academy's 2010-2011 fiscal year covering the time frame from July 1, 2010 to June 30, 2011.

*Mick Maier '64
Interim Director of Development*

Heritage Society Donors

Alumni and friends of Wayland Academy become members of the Heritage Society by including Wayland in their estate plans or by making the Academy a beneficiary in their charitable trusts, annuities, wills, and life insurance policies.

Wayland is grateful to the following alums and friends who have decided to provide future sustaining support to the Academy through the Heritage Society.

Margaret Boldt Anderson '74
Patricia P. Barkhuff H'56
Susan & Fred J. Bartizal, Jr.
Frederick E. Bishop '57
Class of 1989
Harry L. Cody '58
Linda & Larry Cole
Doris & John Fisher '65
Anne Blanchard Gascoigne '53
Franklin D. Hochholzer '55
Trent Jackson
Susan & James Janik '74
R. Scott Jones '63
John C. Jung

Richard H. Kimberly '54
Peter E. Lee '59
David A. Mead '65
Edward J. Miller '59
Kathryn Huth Newton '43
Camilla Nielsen
Ruth H'10 & Raymond '40
Patterson, Jr.
Susan Peterson '63
Mitzi H'43 & James '43 Pickard
Samuel W. Pickard '51
Robert H. Prosser '60
Karl A. Rauschert '47
Martha A. Scott '75
H. John Sirovy, Jr. '69
Budd Sprague '61
Burnett G. Sullivan '69
Marjorie Espersen Thornton '48
Gretchen F. Trumpf '74
Marilyn & Roger VanHaren H'84
Judith Pickard Yeakel '47



Mick Maier '64 greeting a student during Wayland's College Day.

The Endowment: Named Scholarships and Program Designated

Endowment funds are a set of restricted gifts that are annually invested and generate annual income to support student scholarships, faculty compensation, academic programs, facility improvements, and other operating expenses. In addition, Wayland's endowment provides the Academy's Administration with a financial base for the year knowing that it can rely on a certain amount of endowment income annually.

Wayland is grateful to the following alums and friends who have established endowment support at the Academy.

Class of 1947 Scholarship
Class of 1956 Memorial Fund
Class of 1957 Scholarship
Class of 1969 – David S. Terrill '69
(Student Activities)

Class of 1989 Fund
 Janet Newton Allen Scholarship
 Richard Aylward Memorial
 Scholarship
 Hugh A. Bird Memorial Scholarship
 Frederick Eric Bishop and Juvannah
 J. Bishop Memorial Scholarship
 Boldt Special Events Series
 (Fine Arts)
 Greg Boulanger Memorial
 Scholarship
 Addison and Doris Brown
 Scholarship
 Edwin Putnam Brown Memorial
 Scholarship
 Outagamie Charitable Foundation:
 Salute Sesquicentennial Fund
 Campbell Annuity Fund
 Cynthia Snyder Catlin
 Memorial Scholarship
 Stephanie Dorward Smith
 Scholarship
 Dye Family Foundation
 Ella and Glen Dye Endowed
 (Religion & Science)
 Mr. Lewis R. Elin `56
 Ellis Family Scholarship
 William Emanuel American
 Legion Scholarship
 Esten Family Scholarship
 Ferris Memorial Scholarship
 David W. Fierke Memorial
 Scholarship
 Fischer Imaging Corporation
 Scholarship
 Fordis Scholarship Fund
 Edward E. Ford Foundation
 (Faculty Professional Development)
 Edith Frizelle Memorial Scholarship
 James P. Freeman (President's Award)
 Gray Family Scholarship
 Catherine Hatcher Memorial
 Catherine Hatcher Memorial
 (English Literature-Kaleidoscope)
 Adelia Bearder Hathaway
 Memorial Scholarship
 Clarence R. Hathaway Scholarship
 Mikki Hebl `87 & David Harvey, Jr.
 Scholarship
 Magnus Hendrickson Scholarship
 Dr. Weimer K. and Jean J. Hicks
 Scholarship
 Frank X. Hochholzer Family
 Scholarship
 Horder Management Corporation
 Scholarship

Horak-Wayland Residential
 Scholars Award
 Horicon Bank Scholarship Fund
 Ralph G. Johnson Scholarship Fund
 James Johnston Memorial
 Scholarship
 Kastenmeier Scholarship Fund
 Era and Marvin Keil Scholarship
 Knopf Family Foundation
 John P. Lagomarcino
 Memorial Scholarship
 Frederic Sumner LaRue
 Memorial Scholarship
 Peter E. Lee Scholarship
 S. Walter "Abe" Lincoln Memorial
 Award in United States History
 Scholarship Fund
 Linfield Hall Alumni Scholarship
 Suzanna Steptoe Linnell Scholarship
 George J. Maye Scholarship
 Mayer Scholarship Fund
 Laura MacDonald Memorial
 Scholarship
 McGregor Scholarship
 Mark A. McMillan Memorial
 Martin J. Meyer, Jr.
 Memorial Scholarship
 Marion E. Mitchell Scholarship
 Earl C. Moeller Scholarship
 Romona R. and Vincent F. Nast Sr.
 Memorial Scholarship
 Ann Nelson `89 Memorial
 Scholarship
 Ann Nicole Nelson `89
 Scholarship Fund
 Roy B. Nelson Scholarship
 Ben F. Newell Chair
 (Computer Science)
 Harry M. Newton Scholarship
 The Raymond A. Jr. `40 &
 Ruth E. H'10 Patterson
 Scholarship Fund
 Dortha W. and Samuel N.
 Pickard
 Family Scholarship
 Wayland ARISE Scholarship Fund
 David G. Proctor H'07 Chair of
 English
 Clarence Radel Scholarship
 Carla Smith Radford Memorial
 Scholarship
 Rauschert Family Scholarship
 Reader's Digest Endowed Fund
 Scholarship
 Arthur Sadoff Family
 Scholarship Fund
 Thomas H. Sanderson Scholarship

Marian Baldwin Schlicher
 Memorial Scholarship
 Peter J. Seippel Scholarship
 Seippel Economics Chair
 Seippel Fine Arts Chair
 Seippel Scholarship Fund
 Susan Seippel Grow
 Memorial Scholarship
 Joseph and Mary Ellen
 Sensenbrenner Scholarship Fund
 Mr. and Mrs. John M. Sirianni
 Stephanie Dorward Smith
 Scholarship
 Cleveland & Anna Stanley
 Joseph T. Steuer, Jr. Family
 Scholarship
 Swan Library Fund
 Mary M. Swan `25 Scholarship
 C.J. Tempas Scholarship Fund
 Shirley Hughes Tempas Scholarship
 Amy B. Thompson Scholarship
 Jay Hobert Tucker Scholarship
 Dr. Proctor and Alma Lundberg
 Waldo Scholarship
 David S. Terrell `69
 (Athletic Support)
 Valley First National Scholarship
 Wayland Scholars Program
 Westra Construction Inc. Scholarship
 Wheeler Scholarship
 Alton E. Wichman Memorial
 Scholarship
 Myrtie Hyland Winnett Scholarship
 Wirtz Family Fund
 Wirtz Family Athletic Fund
 (Hockey or Athletic General)
 Wisconsin Power and Light
 Scholarship
 Wisconsin Power and Light
 Foundation (Fine Arts)
 Wright-Beebe Scholarship



Students enjoying the picnic table, a gift from the Class of 2012.

Overall Contributions

The following sections acknowledge, with great gratitude, all contributions to Wayland Academy, both restricted and unrestricted, by listing the donors' names in the Academy's philanthropic contribution levels.

Benjamin Newell Society

The Newell Society, founded in 1997, is named in honor of Pastor and Mrs. Benjamin Newell, the first principal and preceptress of Wayland Academy.

Newell Level

The Newell Level recognizes donors who give \$10,000 or more during the fiscal year.

Barb & Andrew Aylward `73
 William Aylward, Jr. `70
 Louise Aylward
 Stephanie & Frederick Bishop `57
 Daniel Brickman `76
 Gerald Dye
 Linda H`11 & Robert `64 Esten
 Michelle Hebl `87
 Sylvia & John Hughes `64
 Anne & Scott Jones `63
 Karen H`08 & Richard `54 Kimberly
 Amy Knopf
 Onnie Leach Smith
 Melissa & Scott Lowell
 William Luedke IV `70
 John B. McKinstry H`10
 Jenette & Gary Nelson
 Elizabeth Parker `72
 Susan Peterson `63 &
 Archie Alexander
 Marie & Greg Pusinelli
 Kathy & Curtis Radford `73
 Eileen H`11 & Karl `47 Rauschert
 Cynthia & Mark Rauschert `83
 Howard Shapiro
 Julia Shaw `47 & Dr. John Shaw
 Larry Smead `56
 Mowry Smith
 Jamie & Joseph Steuer
 Judith Pickard Yeakel `47
 Aylward Family Foundation Inc.
 Community Foundation for the
 Fox Valley Region, Inc.

Dye Family Foundation
 George S. Parker II Living Trust
 Knopf Family Foundation
 Nancy B. Parker Charitable
 Lead Trust #2
 Theda Clark Smith Family
 Foundation

1855 Society

The 1855 Society was created in 2002 by the Board of Trustees to encourage annual support of \$1,855, leading up to the Academy's Sesquicentennial (150 years) Celebration. After 2005, the 1855 Society gift amounts were changed to \$1,000.

The 1855 Society recognizes supporters that contribute from \$1,000 to \$9,999. The 1855 Society has three giving levels: the President, the Francis Wayland, and the 1855 level.

President's Level

The President's Level recognizes donors who contribute from \$5,000 to \$9,999 annually during the fiscal year.

Harry Cody `58
 Yunliu Gong & Rong Gao
 Jeff Hamar `76
 Joseph Horak
 Yung Im Hwang & Jun Yeol Lee
 Sandra Smith Leland `52
 Chase Murphy `03
 Samantha Murphy `05
 Mitzi H`43 & James `43 Pickard
 Samuel Pickard `51
 Patty & William Radford
 Rosina Samadani `85
 Arlene & Jack Schumann
 Susan & Jeffery Verne
 Horicon Bank
 Mary M. Swan Trust
 STS Foundation



Newell Society
Benjamin Newell Level
 \$10,000

1855 Society
President's Level
 \$5,000-9,999

Francis Wayland Level
 \$2,500-4,999

1855 Level
 \$1,000-2,499

Cordial Society
Cordial Level
 \$500-999

Faculty Level
 \$400-499

Senior Level
 \$300-399

Greetings Society
Junior Level
 \$100-299

Sophomore Level
 \$50-99

Freshman Level
 \$1-49

Francis Wayland Level

The Francis Wayland Level recognizes donors who contribute from \$2,500 to \$4,999 during the fiscal year.

Frank Babka `79
 Ardeth Bayley
 Jerome Bomier II `73
 Margaret Nast Caldwell `43
 B. Beck Fisher, Jr. `51
 Ingrid & Lars Graff
 Barbara Burstein Katz `51
 Jeffrey Kuehling `03
 Megan Kuehling `00
 Susan & Robert Kuehling
 Margaret Wharton Minnich `72
 Shannon & Randy Neuman
 Matthew Nielsen `90
 Guy Pontius `47

2010-2011 Overall Contribution Breakdown by Funds

The Academy Fund	\$677,067
Wayland Hall Renovation	\$134,634
Endowment	\$122,665
Program and Operations	\$96,114
Sesquicentennial Campaign	\$74,247
Franklin Street Faculty Housing	\$30,000
Great Teachers Great Teaching Fund	\$30,000
Other Giving	<u>\$5,000</u>
TOTAL	\$1,169,727

Ruth & Frederick Schwertfeger
Georgianna Starz
Jeremy Starz `97
Jennifer Downey Wirtz `86 &
Arthur Wirtz `86
Bayley Family Trust
Kraft Employee Involvement
Programs
Neuman Pools Inc.
Seippel Family Foundation Inc.

1855 Level

The 1855 Level of giving recognizes donors who contribute from \$1,000 to \$2,499 during the fiscal year.

Kathleen & Steven Ashby
Dorothy & Paul Balfe
Virginia Banta
Clay Barnes `84
Jean & Dennis Bauman
Patricia & Oscar Boldt
Robert Bull
David Couch `69
Janice & Andrew Coulson `64
William Craig `57
Mary Bussey & William Craig
James Downing `94
David Erbstoeszger `61
Victor Falk III `63
John Fisher `65
Robert Folsom `63
Debra & Carl Guse
Judith & Gregg Heidebrink `82
Katharine Purdy Herbert `68
Barbara Hill `73
Judy H`08 & Craig H`06 Hill
Franklin Hochholzer `55
Jane & Loren Jahn
Eunjin Hwang & Changhoon Jang

Laurie Wirtz Jenkins &
Steven Jenkins `86
Marion `46 & F. Addison `46 Jones
Dorothy Jung `75
Judy & John Jung
Dorothy & Robert Kastenmeier
Thomas Kelman `81
Mi Hee Cho & Hong Min Kim
Sam Jung Kim `94
Keely Lake
David Larson `71
Peter Lee `59
Joseph Lennertz H`86
Lester Martin `37
Miles McMillin `78
Kimberly & Rodney Miller
William Moore `59
Janet & Harvey Mosley
Wisam Muharib `95
Kathryn Huth Newton `43
Camilla Nielsen
Jane Petit Moore `59
Javier Pizarro `90
E.J. Plesko
George Pratt `53
Allen Proctor `70 & Gail Walter
Elizabeth & Erik Ritman
Elisabeth Law Roberts `49 &
Theodore Roberts
Jon Rogers `50
Joseph Sackett, Jr. `83
Judith Ronin Scherb `63 &
Bert Scherb
Fred Schlicher `48
Catherine Gresch Schwarze `57
Frederick Schwertfeger `91
Mary & John Sensenbrenner, Jr.
Melanie Sherman Eirich &
Philipp Eirich
Alexandra Schwertfeger Solanki `95

Mary Strange `58
Virginia Teas Gill `79 & John Gill
Janet Sharp Turner `56 &
Donald Turner
Jennifer & Andrew Urquhart
Michael VanHaren `82
Elizabeth Burnham Wallman `71
James Wirtz `91
Abbott Laboratories Fund
Anonymous
California Wellness Foundation
Menasha Corporation Foundation
Sodexo Dining
Wharton Foundation Inc.

Cordial Society

The Cordial Society is named for its long standing meaning at the Academy. When a student is "cordially" invited to an event or activity, the student's presence is mandatory.

The Cordial Society recognizes supporters who contribute from \$300 to \$999 during the fiscal year. The Cordial Society has three giving levels: the Cordial, the Faculty, and the Senior Level.

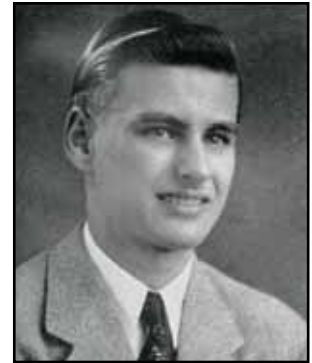
Cordial Level

The Cordial Level recognizes donors who contribute from \$500 to \$999 during the fiscal year.

Diana & Douglas Backus
Patricia Barkhuff H`56
James Bliss `54
Sabina Bosshard `67
Nancy & Kris Boucher H`90
Richard Boya H`67
Peter Breclau `85
Victoria & Jay Brenner `75
Ellen & Kevin Bruning `79
Robert Darling `48
Jordan Esten `02
Craig Felt `99
Fred Flom `59
Suzanne Brannon Groff `49
Steven Hoelt `66
Marilea & Richard Keating
William Keating `00
Donald Koskinen
Dennis Krings-Ernst `00
Sarah Engle Lawrence `53
Christine Baumann Lillesand `77

Why I Give: Ed Rothe `44 – Former Trustee Chair

Ed Rothe was born and raised on the South side of Chicago during the depression. There were eleven people in his family, and they all shared a two-bedroom apartment. In his words: “We had nothing. I mean nothing.” If you had told Ed Rothe when he was fourteen years old that the next eight years of his life would be spent attending Wayland Academy and Princeton University, both on full-tuition scholarships, he would not have known what you were talking about. He had heard of neither of them.



Ed Rothe's senior portrait

The path that led him to Wayland came seemingly out of nowhere. A friend of his mother's, so close to the family that he called her aunt, worked at Marshall Fields as the head of the school and camp bureau. “She was where you went to if your kid was going to school and you needed a uniform,” said Rothe. “So she knew all the private schools anywhere within Fields' reach. She was the one who told my mother I should go to Wayland. I cannot tell you why. I was never told. I was doing normal at school... so one day someone from Wayland showed up at the door, and said ‘Can I talk to you?’ and I said ‘I don't know anything about Wayland.’”

The admissions representative proceeded to offer him a full scholarship to Wayland including full room and board. The experience and education he received in Beaver Dam changed his life.

When he arrived the school was small and struggling. There were only around 100 students, 15 in his graduating class. Rothe credits the everyday lifestyle at Wayland of helping him tremendously. “The dining hall experience for example,” he said. “All the boys had to put on a coat and tie. You had to learn manners at the dining hall, and I had to learn them from scratch. I learned them at Wayland.” He also recalls the dating scene at Wayland, limited in scope as it might have been. “It was very formalized. No fooling around. You went to dances and held hands once in a while, but that was it.”

The academic experience was formative as well, and Ed Rothe recalled that when he attended Wayland most of the faculty were ordained Baptist ministers. “They were amazing, old, dedicated teachers.” In particular, he recalled teachers like Laura McDonald, the Latin teacher, and Alton Wichman who he described as a “born teacher and a Baptist minister.” He admired the way this incredible history teacher seemed to be able to do everything. Wichman, he recalled, was also the Dean of Boys, ran Wayland Hall, and on one occasion had to fill in for an Advanced Math teacher and simultaneously learned and taught Calculus to a class through the entire year. “He just made everything work,” said Rothe.

When Ed Rothe was a senior at Wayland, he was called into the office of the school's president, Weimer Hicks, who asked him: “How would you like to go to Princeton?” Rothe recalled that he was not even thinking about college. “I didn't know anything about anything,” he said. “I said, ‘What's Princeton?’ I had never been west of Chicago.” Hicks proceeded to set up a full ride to Princeton for the young man. “It's amazing,” said Rothe. “It's what happened. I owe Wayland a lot.” For that reason, after Rothe became a lawyer, he started giving back to the school in numerous ways, including serving on the school's Board of Trustees. He was the Chair of the Board during Ray Patterson's tenure as president of Wayland, and during that time the school saw tremendous growth, both financially and physically. Despite his own contributions, Ed Rothe is quick to give all credit for this growth to Ray Patterson. “Ray had big ideas about what we could do for Wayland. He had the ideas. And I gave him the board's support.”

Amongst the projects the pair oversaw were the expansion of the campus with the purchase of the county fairgrounds (now the school's South Campus), the construction of Glen Dye and Ella Dye dormitories, and the new basketball court, to name just a few. They increased revenue by utilizing the campus during the previously dormant summers to host sports camps. With Patterson's vision, the generosity of the Dye family and numerous Wayland alumni, and the oversight of Ed Rothe and his fellow Board members, the school thrived and grew through the 1960's.

Without Wayland's influence, it is difficult to guess what Ed Rothe's life would have been like. But without Ed Rothe, it's difficult to guess what Wayland would be like today. According to Ed Rothe, “The reason you give to Wayland is because you have to believe it's a worthwhile institution. And the only place it's going to get any help is from its alumni. Let's get together and let's support this school. How do you keep this spirit alive over the years? You have to try and rekindle some of the spirit and say: ‘Look what it did for you.’”

Dale Luck `76
 John Lungerhausen `74
 Kathy & Douglas Mathison
 Thomas Moore `62
 Peter Morton `53
 Ernest Price, Jr. `39
 F. Robert Russo, Jr. `71
 Sara Sanderson `74 & Eric Weaver
 Jo & Mark Schumann
 Sandra Caffee Seckel `58
 Charles Shaw `94
 Janet Brown Smith `57
 George Socha, Jr. `75
 Jean Duchow Solomon `62
 Marc Stecker `78
 Carole Fishelson Stone `62
 Jane & Burnett Sullivan `69
 Nancy Swanson
 Jeffery Tempas `63
 Jon Tempas `61
 Philip Templeton `64
 Robin Tornow `60
 Dona & Larry Turner
 Carl VonEnde `63
 Ruth Ann & Thomas Watkins `54
 Jane Ziegler Wayne `71
 Peter Williams `89
 Richard Wittnebel `53
 Jung Sook Kim & Jin Mo Yang
 Michael Yanikowski `73
 Backus Family Foundation
 Keating Foundation, Inc.
 Kohl's
 Schumann Printers, Inc.
 Sodexo Facilities
 The Retirement Research Foundation
 The Windhover Foundation

Faculty Level

The Faculty Level recognizes donors who contribute from \$400 to \$499 during the fiscal year.

Charles Altier, Jr. `61
 Daniel Barber `56
 Amy Fisher Cunningham `89
 Anne Provost Drummond `75
 Yifang Zhong & Chunming Li
 Dorothy VanderVeen

Senior Level

The Senior Level recognizes donors who contribute from \$300 to \$399 during the fiscal year.

James Bayley `62
 Estella Stone Berven `56
 Norman Berven
 Ellen Barber Boeye `52 &
 Robert Boeye
 Margaret Barrett Busch `59
 Reynolds Challoner, Jr. `60
 Robert Chesi `56
 Frances Keally & Marten Cieslik
 Cleone & Louis Davidson
 Elizabeth Bloom Gill `74
 Maria & Rolf Grefe
 Winifred Woods Gulyas `49
 Walter Henes II `52
 Susanne & Hans-Jurgen
 Herkenhoener
 Jerry Hogan `60
 Coleman Hutchins `90
 Laurel Johnson
 Christopher Klee `86
 Ruth & Robert Martin
 Christopher Mientus
 Mary & Kenneth Ostermann
 Dianne & James Paulsen
 Thomas Platt `71
 Lisa & Donald Rens
 Lois & Werner Tramm
 Theanne Kirkby Weil `56
 Almaz Whyte
 Tobias Wohlrabe `73
 Florence & James Yanikowski
 Beaver Dam Women's Health



Mihai Schnell-Harrison `12

Greetings Society

The Greetings Society, named for the Academy's alumni news magazine, which is the nation's oldest alumni publication, recognizes supporters that contribute from \$1 to \$299.

The Greetings Society has three giving levels: the Junior, the Sophomore, and the Freshman Level.

Junior Level

The Junior Level recognizes donors who contribute from \$100 to \$299 during the fiscal year.

James Abbott `56
 Martha Alexander `74
 Jean Allemant H `84
 Diane Alpaugh H `83
 Alice Sheridan Appen `60
 Charles Ashbrook `47
 Kristina & Roger Bacci
 Victoria Royer Bachmann `76
 Abisola & Olushola Bakare
 Robert Banky, Sr. `54
 Sara Traut Bass `75
 Donald Bates
 Marian Mitchell Bates `46
 Steven Baumgartner `91
 Liberty Bell & Mark Born
 Lois & Vernon Biel
 Bruce Black `62
 Anne Lutringer Borgschatz `94
 Kristene Boucher `97 & James Lind
 John Brackett `62
 Angie & Roy Brandell
 Catherine Best & Russell Brandl
 Sue Ann Brandl
 Nicole Brandrup `94
 Erik Brandt `91
 Brad Brickman `74
 Sudro Brown `56
 Thomas Brown `69
 Linda Manaugh Buan `85
 Bonnie & Robert Buchanan
 Scott Buchanan `82
 Mark Buchta `84
 Barbara Tews Budd `53
 Joanne Bunge
 Christine Trost `82 &
 Douglas `82 Burnham
 Elizabeth & Thomas Butterbrodt
 Colin Byrnes `73
 Mr. and Mrs. Richard Calder
 Tami Posnanski Carpenter `88

Michael Cassidy `03
 Judy Jostes Chadima `47
 B. J. & Norman Chimenti
 Trisha Ciochon
 Lana & Michael Clark
 Barrie Clay `77
 Mary & Robert Claytor
 Mari & Robert Cleary
 Linda & Larry Cole
 Kelly Cooper `79
 Leonard Coulson III `61
 Meredith Coulson `95
 Elizabeth Esten Cross `56
 Stuart Cushman `83
 Connie & Raymon Darling
 Don Davis `50
 Eric Davis `01
 William Davis `65
 Elizabeth & Scott Dawes
 Kim & Dean Day
 George Demos `95
 Mary & Donald Derr
 Sandra & Jose Diaz
 Judy Glunz Diaz `81
 Bruce Dinsmore `74
 Mary Doughty
 George Dowell
 Martha Stevens Dresser `68
 Gracia & Walter Drew
 Mary Jo & Daniel Dries
 Daniel Dries `83
 David Dries `88
 Mark Duffy `79

Jacqueline Kerr Dye `49
 Michael Ecker `77
 Georgia & Richard Eisenreich
 Thomas Ellis `65
 Mary & Phillip Esten `60
 James Exner `70
 Brigitte & Gunther Fehrensén
 Millicent Ferris `57
 Connie & Ric Fiegel
 Ann Hoyer Fisher `57
 Carol & Thomas Fisher `50
 Leslie Snell Franken `88
 Kari Tate Fulton `80
 Jacquelyn Fure
 Mary Gale `67
 Susan & Douglas Ganske
 Anne Blanchard Gascoigne `53
 James Gascoigne `86
 Nancy & William Gibbons
 Robert Gollwitzer `42
 Cynthia Grantz
 Nada Proctor Graves `51
 Jane & Raymond Gregg
 Margaret & Douglas Haag
 Agnes Hadhazy `91
 Marjorie Stephenson Haldeen `51
 Peter Halverson `51
 Marilynn Hamar
 Debbie & Jack Hanks
 Victoria & Randall Harris
 William Hartzell `72
 Pamela & Robert Hatch
 Dorothy & Don Henschel

President's Cup

The class of 1956 has taken the lead away from the class of 1973 and had earned the top spot in the President's Cup Competition. The percentage next to the class year denotes the percentage of graduates from that class who contributed to *The Academy Fund*.

Congratulations to the Class of 1956!

Class of	Percentage	Class of	Percentage
`56	19.63%	`43	6.25%
`73	15.15%	`72	6.25%
`57	14.86%	`97	6.15%
`62	11.76%	`85	5.97%
`63	11.58%	`54	5.81%
`61	11.24%	`81	5.71%
`50	11.21%	`70	5.66%
`60	11.21%	`94	5.61%
`59	10.68%	`52	5.48%
`53	10.47%	`78	5.41%
`58	10.23%	`89	5.41%
`76	9.57%	`66	5.00%
`74	8.91%	`65	4.88%
`51	8.89%	`09	4.88%
`79	8.62%	`04	4.76%
`75	8.42%	`05	4.69%
`47	8.25%	`00	4.55%
`46	7.84%	`01	4.55%
`49	7.69%	`84	4.38%
`64	7.69%	`42	4.35%
`67	7.55%	`39	3.57%
`80	7.34%	`99	3.39%
`71	7.20%	`69	3.28%
`95	7.06%	`90	2.88%
`02	6.90%	`96	2.88%
`82	6.82%	`08	2.47%
`83	6.72%	`37	2.38%
`88	6.67%	`55	2.38%
`68	6.60%	`98	2.38%
`77	6.60%	`48	2.27%
`91	6.60%	`87	2.22%
`86	6.42%	`10	1.49%
`03	6.33%	`92	0.94%
`41	6.25%	`93	0.94%



Luke Bacci `12 blocks the way for Devin Denson `13

2010-2011 Constituency Giving Breakdown

	<u>Contribution</u>	<u>Percent Giving</u>
Trustees	\$173,933	100%
Trustee Emeriti	\$119,048	100%
President's Council	\$3,400	100%
Faculty & Staff	\$3,710	80%
Alumni	\$460,748	19%
Parents/Grandparents	\$369,162	31%

Why We Give: Melissa and Scott Lowell – Parents of Molly `09

Scott Lowell, a developer and builder in Lake Geneva, Wisconsin, is himself the product of a boarding school. “My family made that commitment,” he said. “So when my daughter (Molly) was a sophomore, we were looking for a boarding school environment. I happened to speak to a business acquaintance about this, and he started rattling off people I knew in the area who went to Wayland Academy.” Impressed, he talked about it with Molly, they set up an interview, took a tour of campus, and met with then-president Bob Esten ’64 and Kris Boucher H’90 from the admissions office.

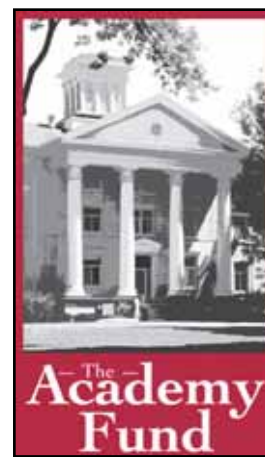


Trustee Scott Lowell

They liked everything they saw about the school. “It was a great campus and everything,” said Lowell, “but we felt like the commitment of the teachers we met and the administrative staff were just great.” Molly Lowell enrolled her sophomore year, and her father said the changes that followed were impressive. “I sometimes kid that at family dinners, before Molly went away to Wayland, I would ask her a question and she would say, ‘Huh. No. No. No.’ and after one year at Wayland, she engaged me and showed me the errors of my ways... She grew tremendously in her ability to express herself. She matured tremendously.”

Among the reasons for this transformation, Scott Lowell credited the mentor program, the prefects, and the individual attention and interactions with peers and faculty members. He also feels that if Molly had stayed at her previous high school, “she would not have had the choices or the level of college choices that she had. She was accepted to every college she applied to and ended up at Denison.”

The changes the Lowells saw in their daughter and the places they still see her heading today are the reasons they cite when they think about why they give back to Wayland. “We do it out of gratitude,” said Scott Lowell. “We got more out of the deal than what we paid for. I think the administration and staff do a wonderful job. I think it’s a great place for us to put some of our money, and I think that what it did for her, it could do for other kids.”



The Academy Fund is Wayland’s annual unrestricted giving program and is essential to bridge the financial difference between the operating costs of the Academy and the revenue generated from tuition and endowment income.

The Academy Fund contributions are allocated to fund student scholarships, social events, athletic opportunities, character development activities, and overall improvements of the Wayland Community.

**The Academy Fund
Fiscal Year
2010-2011**

**Raised
\$771,072**

**Goal
\$700,000**

Beth Heuer `75
 Candis Bailey Hickey `72
 Judith Nagley Hidde `56
 Gordon Higgins `58
 Elaine Hill
 David Hommel `94
 Jonathan Homuth `61
 Jan Wells Hooker `70
 Julia & Luke Houdek
 Antonia Frederick Houston `77
 Carol Wolf Huber `50 &
 Carl `49 Huber
 Christopher Hutchins `89
 Betty & Donald Jabas
 Trent Jackson
 Jerry James `50
 Marilyn & Craig January
 Bouw John `13
 Jennifer Karl Johnson `92
 Katharine Mayer Johnston `47
 Don Jones, Jr. `46
 Nancy & David Kasper H `81
 John Kearns, Jr. `57
 Linda Forsgren Kearns `58
 Laura Baddaker Kee `46
 Holly Keene-Gefvert `78
 Helen & John Keil `50
 Todd Keil `80
 Nathalie & Paul Keller III
 Harold Kempfer `50
 William Kerr, Jr.
 Myoung Suk & Sung In Kim
 Arthur Klawans `50
 Nancy Hagan Klein `68 &
 Verne Klein
 Paul Kleist `73
 Stephen Koenig `80
 Walter Koskinen `73
 Melissa & John Landdeck
 Charles Larimer
 Angela & John Lathrop
 Medeline & Raymond Laufenberg
 Randall Lawton `63
 John Lee `85
 Joung Sook Cho & Moohee Lee
 Jean Elser Leritz `56
 Christopher Leslie `58
 Penelope Lewis
 Vicki Mason Lonngren `56
 Esther Doughty Luckhardt
 James Malone `41
 Beth Marbach `84
 Andrew Martin `81
 Patricia Duez Martin `96
 Theodore Martin `62
 Eldon Mayer `53
 Adrian Mazar `76

Toni McBride
 Sean McCann `85
 Joan Dunham McCombs `50
 Lee McConaghy `62
 Lesley & Charles McKee
 Stephen McMillan `78
 Ann Merizon `82
 Karla Mertig
 Mary Schnur Metcalf `61
 Nancy Detweiler Metzger `68
 Gail & Edward Miller `59
 Gloria & Scott Miller
 Janet Maier Millermaier `72
 Rodolfo Molina `81
 Gretchen Wright Moore `60
 Connie & John Moran
 Charles Morgan `56
 Kai Helland Mulford `79
 Kathe Gund Murphy `60
 Eric Nagle `82
 Helen Neis
 George Neuberger, Jr. `71
 Philomena & Friday Odiase
 Jennifer Martin Ohzourk `89
 Carol & Richard Okray
 Alison Burrowes Olsen `77
 Gail & Robert Onan `56
 Paul Osvald H `11
 Dolores & Huberto Pasillas
 Ann Baird Pepper `63

Helen Perry
 W. James Plews `50
 Elizabeth Plier
 Mary Howe Potter `59
 Karla Preuss
 John Proctor `60
 Robert Prosser `60
 Mr. and Mrs. W.E. Purdum
 Virginia Drake Raddatz `39
 Quintin Radford `05
 Elizabeth Ratajczak `96 &
 Tyler Ratajczak
 Mary Vogl-Rauscher &
 Thomas Rauscher
 Philip Rauschert `76
 William Kent Reade `64
 Jordan Cole `02 &
 Keegan Rehfeldt `04
 Linda & Thomas Rhatigan
 Sylvia & William Richards
 Barbara & Charles Roberts
 Kate Rose `67
 Sally Zellner Rossmiller `76
 Sylvia Rowe
 Richard Russo `72
 Darlene & Richard Sack
 Christi Salm & Friends at
 Schaper, Benz & Wise
 Nadia Samadani Kathwari `97
 Barbara Duce Sarwar `56



*Legacy Photo from Fall Family Weekend September 2011 – 1st row (l-r):
 Bethany Guse `12, Sonali Willihnganz `14, Molly Willihnganz `14, Sophie
 Willihnganz `15, Sarah Willihnganz `13, Landyn Heimerl `13 and Mary-Lucille
 Smith `12; 2nd row: Kevin Bruning `79, Allison Bruning `14, Elizabeth
 Gascoigne `15, James Gascoigne `86, Virginia Teas Gill `79 and Will Gill `13*

Annette Frerker &
 Gerold Scheunemann
 Thomas Schilling
 Paul Schmidt `74
 Roland Schoen, Jr. `56
 Zachary Schwartz `10
 Judith Jensen Schwartzbaum `61
 Sandra Schwefel Massie &
 Dan Massie
 Hilary & Sean Scott
 Kathi Seifert
 Robert Sharp `53
 Douglas Shearer `72
 Shirley Tye Shearman
 Susan & Larry Silton
 Charlotte Snow
 Sharon Spaans & Harold House
 Karen Speicher `80
 Christopher Stanton `67
 Connie & Dave Stelsel
 Brian Stone `89
 Penelope Hommel Strack `96
 Barbara & Alan Sturges
 Gen Johansson Sullivan `82
 Nubia Swain
 Phillip Swain `08
 Valentina Limping & John Temaga
 Richard Temkin `62
 Marjorie Espersen Thornton `48
 Leslie Trewyn
 Jane & Thomas Triller
 Camille Turk
 Peter Vance `79
 Robert Vilker `71
 Thierry Louis Villarete `11
 Maria Luisa & Tirso Villarete
 Sue & Darryl Voigt
 Stephen Wagner `67
 Julie & Dean Wahl
 Kurt Walters H `11
 Hugh Walton `79
 James Wangerin `66
 G. Lane Ware `57
 Curt Warner `82
 Oras Washington, Sr.
 Emma McGraw Watson `59
 Jacqueline Henriksen Weber `58
 Marilyn & Frederick Webster, Jr.
 Frederick Webster `91
 Beatrice & Alan Weiler
 Sharlene Weiss
 Glenn Westlake `83
 Natalie Wetzal-Rasmussen `91
 Gloria H `65 & Robert Wheeler
 George White `62
 Karen & Bob Wiersma
 Kim & Thomas Wiersma

Mary Lou Miller Williamson `55
 Carol Swanson Wilson `47
 Clinton Wilson `88
 Unia Griffin Wilson `05 &
 Terrence `02 Wilson
 Shane Wohlrabe `73
 Mary Margaret Wohlwend
 Michael P. Wolfe `61
 Barbara Lawton Yake `66
 Su Kyung Yun & In Sik Yu
 Brian Ziebell `79
 Anonymous
 Central College Round-Robin
 Friends of Linda Esten's
 Design Plus, Inc.
 Excel Orthopedics
 GE Foundation
 Gene's Beaver Floral
 Johnson School Bus Service, Inc.
 Maertz & Haase Construction, LLC
 McClone Insurance Group
 Morgan Stanley
 Parent, Dott & Company, LTD.
 Patty Foresman Foundation
 Verlo Mattress Factory Store

Sophomore Level

The Sophomore Level recognizes donors that contribute from \$50 to \$99 during the fiscal year.

Ardis & Leon Achterberg
 Barbara Chandler Allen `66
 Mary Koch Barclay `60
 Jane Richards Barker `74
 Elizabeth Cumbler Bartolini `67

Carol H `99 & Eric Becker
 Deborah & Andrew Bissonnette
 Roger Boelio `64
 Doris Bolton
 Anna Marie & Ron Branda
 John Brenner `81
 Roger Buddig `80
 Jan & Richard Caughlin
 Mary & David Clark
 Sharon & George Cobb H `80
 Marc Cram `69
 Shirley & Carl Daniels
 Margaret Hoyer Davies `50
 Deanna & Gerald Disch H `93
 Jareer Ellass `80
 Joanne & Donald Elliott
 Bradford Ellis `86
 Johanna Karsten Fabke `56
 Suzanne & William Folland
 Dorothy & Karl Forsgren
 Anne Wood Frank `80
 H. John Fromm III `63
 Catherine Garnett `66
 David Godec `77
 Donna Greenacre
 Lisa & John Grosz
 Elizabeth Rumpel Gukich `58
 Joy Brown Guyer `56
 Edward Hamb `88
 Penny & Rolf Hansen
 Marilyn & Edward Hartig
 Sarah Staub Hicks `65
 Darby & Stanley Hintz
 Dorothy & John Imse
 Kathryn Freeman Jansky `70
 Jeffrey Johnston `73

The Academy Fund Contributions from 2000 to 2011

<u>Fiscal Years</u>	<u>Donors</u>	<u>Contributions</u>
2010-2011	709	\$771,072
2009-2010	621	\$588,951
2008-2009	714	\$574,035
2007-2008	764	\$625,717
2006-2007	652	\$508,728
2005-2006	765	\$753,741
2004-2005	1,133	\$559,621
2003-2004	1,082	\$643,515
2002-2003	1,043	\$639,694
2001-2002	938	\$547,947
2000-2001	714	\$456,470

Why We Give: Chase `03 and Samantha `05 Murphy

One of the interesting aspects of enrolling as a boarding student at Wayland is that, to a certain extent, students often arrive with a blank slate. Almost no one knows them at Wayland. If they had stayed home and progressed from eighth grade to ninth grade (or ninth grade to tenth grade, etc.) they would likely know all or most of their classmates already. They would have a shared history and expectations would already be in place as to “who they were.” For all the trepidation that a new student might feel at the thought of immersing themselves in strangers, there is an excitement that comes with starting anew at a place such as Wayland.

But when Samantha Murphy arrived at Wayland in fall of 2002, there was a very familiar face waiting for her: her brother Chase. He was a senior and she was entering as a sophomore (just as he had, two years before). “I wanted to attend Wayland right away,” said Samantha, “because my brother was there and he loved it so much. But the decision was made to go through my freshman year at home, and then make an educated decision afterward. I left as soon as I could. Having Chase there before me was great. I was greeted with open arms – everyone just treated me like we were already friends. It felt like home right away.”



Chase and Samantha Murphy

Chase felt a similar sentiment when his little sister arrived at Wayland. “We’ve always had a great connection,” he said. “It was great to have a family member there when there were things I needed to talk about. And I could help her when she was having trouble adjusting.”

Although Chase and Samantha had their own, unique experiences in high school, they both share a belief that they grew up faster and were ready for college because of the days they spent studying and living at Wayland. “The structure is phenomenal,” said Chase, “and the classes were great, but the real life experience and getting to know people are what really made it special. Those are good life lessons at a young age. You go off to college and see these people moving into dorms and they’ve got two couches to move into a room the size of a bathroom. I was unloaded and meeting people and having fun. Everyone was surrounded by parents and crying and I’d already done that for three years.”

Samantha credited her Wayland years with turning her into the person she is today: “I can honestly say that what I learned and experienced there has helped shape who I am, and without it, I’d be a very different person. In addition to that, the friendships that I built at Wayland are some of the strongest ones I have. It can really be a life-changing experience ... not necessarily for everyone, but it certainly was for me. I think it makes you grow up faster, having independence with a lot of responsibility. It made the transition to college seem nonexistent.”

Six and eight years after graduating from high school, both Chase and Samantha are progressing rapidly in their respective careers. Chase joined Enterprise Rent-A-Car after graduating from Carthage College, and he now manages his own branch in Round Lake Heights, Illinois. Samantha completed a bachelor's program in professional photography at the Brooks Institute and now lives in Chicago. Since graduation she has “done a graphics internship at a post-production house, a handful of freelance work, and I am now working at a post-house as an Imaging Specialist.”

As often happens for students at Wayland, both Chase and Samantha keep strong ties to the school, particularly through their friends. “The friendships develop in a special way,” said Chase. “To live with someone new, someone you don't know, my first roommate was from Turkey, you learn about all the nuances of other countries and cultures at such a young age. I think other people don't get that introduction to other cultures until later in life.”

Between weddings, reunions, online messaging, and just regular meet-ups, they have stayed in touch with their friends from Wayland. But even at their relatively young ages and early points in their careers, they have also given financially to Wayland.

Samantha explained that, “I'm extremely lucky to be able to give back to Wayland at such a young age, and it makes me

happy to do so. What I learned and experienced there is something powerful that truly impacted my life. The faculty during my time there were true educators, and really pushed me to do better. Their willingness to help each and every student succeed is something that makes Wayland special.”

Chase Murphy echoed this sentiment and stated that he wants to help Wayland continue to give kids the sort of experience that he had. “Wayland helped me out with my life and made high school a phenomenal experience for me,” he said. “The least I could do was give a little back. Wayland took care of me, so I want to take care of Wayland.”

Katherine Kent
 Jean & Frank Koffend
 Elise Krause `04
 R. Theodore Landon `57
 Barbara & Wayne Larsen
 Sarah Lavicka `71
 Margaret Hendren Lee `50
 Joel Lefton `62
 Loren Lindeke `61
 Ellen Macieiski
 Beverly & Alan Martens
 Britt Forden McGarity `87
 Tucker McNamara `56
 Joyce & Mark Messer
 Carol Smith Metzger `56
 Margaret Mikkelsen `93
 E. Gertrude Miller
 Carol Mosley
 Kelly & Donald Neuert
 Thomas Nissalke `51
 Betty Odom
 Lorrie Odom `85
 Judith Easton Opsahl `53
 Cheryl Pivar `80
 Harriet Porter `64
 Paulette & J. Scott Provost `73
 Eva Hartman Ptaschinski `83 &
 Thomas Ptaschinski
 Tracy & Randall Rabata
 Junice & Robert Rens
 Chris & Lyle Richter
 Trig Rogers `84
 Lynn & Thomas Saxe
 Rose Schaalma H `10
 Katherine Kvale & Thomas Schirz
 Thora Stoutner Shannon `01
 Yoko Shimada `95
 Michael Shohoney `79
 Joseph Skupniewitz `59
 Pauline & Roger Sneath
 Janet Bowman Sparks `62
 Susan Schneider Stewart `59
 Jo Ann & Glenn Stommel
 Paul Szymanski `03
 Lauraleigh Tambling
 Andrea & Thomas Tatlock
 Leann Tramm
 Paul Tramm
 Robert Utke `51

Marguerite Van Ham
 Marilyn & Roger VanHaren H `84
 Kimberly Moore Wall `84
 Mary & Kenneth Walter
 William Wiedenhoeft `74
 Louise & Elvin Will
 Lorna & James Will
 Kerry & Paul Wolfgram
 Ann Schlaefer & David Wright
 A-1 Tri-County Vacuum &
 Sewing Center, LLC
 B & B Wood Floor Refinishing
 Schenck SC
 Thrivent Financial for
 Lutherans Foundation

Freshman Level

The Freshman Level recognizes donors who contribute from \$1 to \$49 during the fiscal year.

William Allen `11
 Linda Anderson
 George Aubry
 Karlie Aubry `09
 Dena Lohse Bachman `97
 Julia & Thomas Behrenbeck
 Jayne Boebel
 Marilyn Roethke Bolton `49
 Amelia Brandell `11
 Mark Bruning `09
 Matthew Bruning `11
 Adam Bunkoske `09
 Sicheng Chen `11
 Frank Clark `99
 Gerald Climmons `82
 Judith Fisher Congedo `59
 Marilyn Connors
 William Cross, Jr. `64
 Linda Darling
 Patricia Davis
 Giovanni Diaz `11
 Scott Doolittle `65
 Kerry & William Dore
 Georgia Dorsey
 Lia Dorsey `88
 Rebecca Downey `11
 Lynn Duvall

Peter Easton `60
 Sherry & Jan Eggum
 Michael Estrella `11
 Irene & Donald Exner
 Carla Radford Fair `00
 Rebekah Faust `11
 Sharon & John Fenlon
 Stephanie & Todd Franklin
 Barbara Lippert Fuhrman `67
 Enrique Galvan `11
 Louis Ganske
 Mariana Garcia `11
 Donna & Lance Goetzman
 Lara Greenacre `11
 Deborah Grenier
 Sharon Grinyer
 Alexander Haberman `11
 Linda & Mark Hale
 Karin Johansson Hannusch `81
 Mark Harrison `85
 Barbara & Paul Hartl
 Diane & Michael Hartzheim
 Helen & Don Hemmes
 Dawn Hendon
 Johann Herkenhoener `11
 Weimer Hicks, Jr. `54
 Marshall Hiestand `11
 Josiah Hintz `11
 Alexia Hoffmann `11
 Jane & John Houlihan
 Martha Howard `76
 Mary & Thomas Irwin
 Suzanne Filut & Peter Jensen
 Stacey Westra Johnson `88
 Elizabeth Strong Jones `56
 Taylor Jordan `11
 Moonhyok Kim `11
 Yong Jun Kim `11
 Sue & Terrill Knaack `68
 Lindsay & Clancy Knaup
 Susan & James Kratz
 Thomas Kuenzi `77
 Susan `57 & Jon `57 Labahn
 Cara Zilisch Landolt `89
 Charlotte Lange `11
 Cynthia & Michael Lardy
 Stephanie Arndt Latimer `98 &
 Charles `98 Latimer
 Marine Laval `11

Edgar Lentz, Jr. `65
 Sue Link
 Russell Little `11
 Carolyn Lowry `04
 Yangfan Lu `11
 William Luebke H `89
 Louis Marcheschi
 James McCallum `02
 Jenna Meagher
 Rita & Tom Medland
 Mackenzie Miller `11
 David Mosley `11
 Susan & Karl Nienhuis
 Jeffrey Norberg `81
 John Patterson H `72
 Michael Paugh `11
 Ronnie Peters `58
 Megan Petersen `11
 Frances & Curtis Peterson
 JoEllyn Phillips `52
 Mary Polesnak `11
 John Pryme `11
 Lillian Bachofen Ptaschinski `49 &
 Gerald `49 Ptaschinski
 Oliver Ptaschinski `11
 Sophie Ptaschinski `11
 Weston Radford `03
 Jeffrey Rauscher `09
 Anne Rauschert `11
 Ashley Rauwolf `11
 Lisa Rayford `11
 Jacqueline Redmer `95
 Conrad Rens `11
 Lynette Robinson
 Greta Rogers
 David Rosas `11
 Linda Rhodes Salverson `63

Jeffrey Sanborn `84
 Allison Roy Sandlin `83
 Nancy Parent Santarella `76
 Nicolas Schaalma `08
 Karl Schleevogt `11
 Ann & Daniel Schubert
 Brooke Schumann `11
 Virginia & Raphael Seaholm
 Roxanne Sell H `92
 Megan Wahlen Shine `85
 Beverly & Linward Shivers
 Catharine Bancroft Sloan `50
 Cecil Smith `49
 Sophia Stavropoulos Smocke `41
 Karen Sorenson `73
 Ruth Sproull
 Kirk Stelsel `01
 Diane Stodola
 Caleb Sturges `11
 Michelle Vickery Suski `67
 Amanda Tramm `11
 Jean Browne Turner `42
 James Urquhart `11
 Margaret Wahlen
 Pamela Rawn Waller `64
 Leslie Walton `11
 Siyi Wang `11
 Jennifer Whiteside `11
 Glenn Wiedenhoef `75
 Jamie Fakes Wolf `88 &
 John Wolf
 Dong Yun Yang `11
 Hee Seung Yang `11
 XiaoXi Yang `11
 Phyllis Zeiss
 Yushufan Zhou `11

Amount of Giving by Dollar amount per Class

Class of	Amount	Class of	Amount
`37	\$1,000.00	`76	\$18,938.00
`39	\$800.00	`77	\$1,433.40
`41	\$230.00	`78	\$1,750.00
`42	\$125.00	`79	\$5,920.00
`43	\$8,500.00	`80	\$680.00
`46	\$2,250.00	`81	\$1,550.00
`47	\$140,237.73	`82	\$3,175.00
`48	\$1,950.00	`83	\$12,675.00
`49	\$2,175.00	`84	\$1,330.00
`50	\$2,075.00	`85	\$6,250.00
`51	\$13,575.00	`86	\$7,983.26
`52	\$6,605.00	`87	\$25,050.00
`53	\$3,300.00	`88	\$850.04
`54	\$14,650.40	`89	\$1,325.00
`55	\$2,100.00	`90	\$4,436.36
`56	\$14,330.00	`91	\$3,980.00
`57	\$33,125.00	`92	\$100.00
`58	\$7,525.00	`93	\$50.00
`59	\$6,475.00	`94	\$3,150.00
`60	\$1,585.00	`95	\$2,360.00
`61	\$2,500.00	`96	\$500.00
`62	\$2,950.00	`97	\$2,775.00
`63	\$55,192.89	`98	\$25.00
`64	\$202,830.75	`99	\$530.00
`65	\$1,450.00	`00	\$4,820.00
`66	\$800.00	`01	\$290.00
`67	\$1,215.00	`02	\$930.00
`68	\$1,385.50	`03	\$10,970.00
`69	\$2,150.00	`04	\$225.00
`70	\$22,650.00	`05	\$7,605.00
`71	\$3,735.41	`08	\$220.00
`72	\$39,000.00	`09	\$115.00
`73	\$28,060.00	`10	\$100.00
`74	\$2,074.00		
`75	\$3,715.96		



Cast of "You Can't Take it With You"

Wayland Academy Overall Contribution Giving Level Analysis 2010-2011

<u>Number of Donors</u>	<u>Donor Category</u>	<u>Giving Level</u>	<u>Amount Contributed</u>
28	Benjamin Newell	\$10,000 plus	\$859,081
15	President Level	\$5,000 to \$9,999	\$86,114
16	Francis Wayland Level	\$2,500 to \$4,99	\$47,150
70	1855 Level	\$1,000 to \$2,499	\$86,204
54	Cordial Level	\$500 to \$999	\$30,882
6	Faculty Level	\$400 to \$499	\$2,450
28	Senior Level	\$300 to \$399	\$8,574
287	Junior Level	\$100 to \$299	\$41,039
104	Sophomore Level	\$50 to \$99	\$5,555
<u>148</u>	Freshman Level	\$1 to \$49	<u>\$2,678</u>
Totals 756			\$1,169,727



Siblings and Cousins Photo from Fall Family Weekend September 2011: 1st row (l-r): Meredith Turner `14, Meghan Turner `12, Bryanna Sanders `13, Kandice Sanders `12, Haley Fiegel `14, Allison Bruning `14, Sophie Willihnganz `15, Sarah Willihnganz `13, Molly Willihnganz `14 and Sonali Willihnganz `15; 2nd row: Kirsten Lardy `12, Leah Wahl `15, Colin Wahl `12, Kennedy Simmons `13, Jayme Neitzel `12, Michael Pryme `13 Valerie Pryme `13, Emanuel Osorio `14 and Alexis Osorio `15; 3rd row: Bethany Guse `12, Emma Petersen `12, Laura Petersen `14, Elizabeth Gascoigne `15, Eric Vaubel `14, Michael Vaubel `12, Ryan Rabata `12 and Morgan Stebbins `14

In Memory of

The donor(s) is listed below the honoree.

Margaret Boldt Anderson `74

Bonnie & Robert Buchanan
Linda Spaans Esten H`11
Betty & Donald Jabas
Donald Koskinen
Kathi Seifert
Andrea & Thomas Tatlock

Marian Mitchell Bates `46

Donald Bates

Ben Bergum `99

Craig Felt `99
Janet & Harvey Mosley

Jill VanHaren Borner `80

Diane Alpaugh H`83
Margaret Basic `84
Ann & Peter Boline
Sharon & George Cobb H`80
Deanna & Gerald Disch H`93
Linda Spaans Esten H`11
Shirley & William Fletcher
Janice & Thomas Hallett
Gay & Jerry Jackson
Judy & John Jung
Angie & Mark Kirst
Joseph Lennertz H`86
John B. McKinstry H`10
Rodolfo Molina `81
Natalie Murphy
Kelly & Donald Neuert
John Patterson H`72
Cheryl Pivar `80
Sylvia & William Richards
Nicolas Schaalma `08
Rose Schaalma H`10
Nancy & Robert Schantz H`85
David Schreiber and Team
Faye & James Schultz
Hilary & Sean Scott
Eli Seighman H`71
S. Reginald Smith `81
Sue & Darryl Voigt
Sybil & David Westlake
Arleen & Ralph Wiedenhoeft

Louis O. Bunge Class of 1913

Joanne Bunge

Jon Robert Davis

Penny & Rolf Hansen

Robert L. Esten `64

Diane Alpaugh H`83
Linda Anderson
Louise Aylward
Jean & Dennis Bauman Family
Carol H`99 & Eric Becker
Patricia & Oscar Boldt
Sue Ann Brandl
Elizabeth & Thomas Butterbrodt
Mr. and Mrs. Richard Calder
Mary & Robert Claytor
Sharon & George Cobb H`80
Marilyn Connors
Elizabeth Esten Cross `56
Connie & Raymon Darling
Margaret Hoyer Davies `50
Patricia Davis
Elizabeth & Scott Dawes
Deanna & Gerald Disch H`93
Gracia & Walter Drew
Mary Jo & Daniel Dries
Daniel Dries `83
David Dries `88
Georgia & Richard Eisenreich
Jordan Esten `02
Linda Spaans Esten H`11
Mary & Phillip Esten Family,
Phil Jr., Andy and Chad
Irene & Donald Exner
Victor Falk III `63
Sharon & John Fenlon
Connie & Ric Fiegel
Donna & Lance Goetzman
Jane & Raymond Gregg
Deborah Grenier
Linda & Mark Hale
Diane & Michael Hartzheim
Pamela & Robert Hatch
Helen & Don Hemmes
Dawn Hendon and
son Rickey Hendon
Darby & Stanley Hintz
Jane & John Houlihan
Betty & Donald Jabas
Nancy & David Kasper H`81
Helen & John Keil `50
Thomas Kelman `81
Sue & Terrill Knaack `68
Jean & Frank Koffend
Walter Koskinen `73
Susan & James Kratz
Melissa & John Landdeck
Penelope Lewis
Sue Link
Linda Esten's, Central College
Round-Robin Friends
Lesley & Charles McKee
John B. McKinstry H`10
Tucker McNamara `56



Bob Esten `64

Jenna Meagher
Rita & Tom Medland
Kimberly & Rodney Miller
Janet & Harvey Mosley
Kai Helland Mulford `79
Kelly & Donald Neuert
Susan & Karl Nienhuis
Carol & Richard Okray
John Patterson H`72
Frances & Curtis Peterson
Harriet Porter `64
Eva Hartman Ptaschinski `83 &
Thomas Ptaschinski
Tracy & Randall Rabata
Kathy & Curtis Radford `73
Linda & Thomas Rhtican
Sylvia & William Richards
Chris & Lyle Richter
Greta Rogers
Christi Salm & Friends at
Schaper, Benz & Wise
Rose Schaalma H`10
Judith Ronin Scherb `63 &
Bert Scherb
Katherine Kvale & Thomas Schirz
Fred Schlicher `48
Zachary Schwartz `10
Ruth & Frederick Schwertfeger
Mary & John Sensenbrenner, Jr.
Susan & Larry Silton
Sharon Spaans & Harold House
Diane Stodola
Jo Ann & Glenn Stommel
Nancy Swanson
Leann Tramm
Paul Tramm
Jane & Thomas Triller
Janet Sharp Turner `56 &
Donald Turner
Marilyn & Roger VanHaren H`84
Susan & Jeffery Verne
Sue & Darryl Voigt
Carl VonEnde `63
Margaret Wahlen

Mary & Kenneth Walter
Sharlene Weiss
Mary Margaret Wohlwend
Phyllis Zeiss
Brookfield Academy
Horicon Bank
McClone Insurance Group
Parent, Dott & Company, LTD.
Schenck SC
Nancy Parent Santarella `76

Josephine Badger Fife `27
Lynn Duvall

Tim Fischer `91
Erik Brandt `91

B. Beck Fisher, Jr. `51
Lenore & James Brachman
Carole & Gerard Moretti
Mary & John Sensenbrenner, Jr.

Helen Greenup
Virginia & Raphael Seaholm

Jack Harridge `52
George Pratt `53

Joyce C. Hoeft
Steven Hoeft `66

Stephen A. Katz
Barbara Burstein Katz `51

Susan Dee Kerr `52
Jacqueline Kerr Dye `49
William Kerr, Jr.

Dr. Henry Lardy
*(Grandfather of Austin `10 &
Kirstin `11 Lardy)*
Darby & Stanley Hintz

Malcolm McMillan `42
Debra & Carl Guse

Orin McMillan `33
Debra & Carl Guse

Martin J. Meyer, Jr. H `81
Mark Duffy `79

**Ramona Nast Class of 1912 &
Vincent Nast Class of 1911**
Margaret Nast Caldwell `43

Ann Nicole Nelson `89
Jenette & Gary Nelson



Ray Patterson, Jr. `40

Raymond A. Patterson, Jr. `40

Barbara & Charles Baker
Patricia & Jack Belongia
Sarah & Denis Braham
Mary Chase
Kristin & Brian Cheek
Karen & Eli Crogan
Elizabeth Esten Cross `56
Andrea Eisenstein
Jo Anne Nelson & Bill Fitch
Carolyn & James Foley
Marita & David Glodt
Joanne & Donald Gould
Elsie Gould
Marsha & Howard Greenwood
Jerry Hogan `60
Martha Jacobs
Jane & William Johnson
Joy & Joseph Kaplan
Karen H `08 & Richard `54 Kimberly
Jeanine & Gregory Kostka
Susan `57 & Jon `57 Labahn
Harriet Leach
Patricia Leach
Connie Coley Loden `73
The Lopez Negrete Family
William Luedke IV `70
Moses Malone
Joan Messinger
Ralph O'Connor
Ruth Patterson H `10
Patricia Perrone
Susan Peterson `63 &
Archie Alexander
Nancy & Joseph Pogge
George Pratt `53
Allen Proctor `70 & Gail Walter
David Proctor `68
Eileen H `11 & Karl Rauschert `47
Rosemary & Fred Rehm
Sylvia & William Richards
Mark Rubal
Jayne Schiek

Terri & Timothy Sitter
Nancy Howe Spivey `52
Jonna & Robert Stauffer
Richard Stegall
A. E. Webb
Mary Margaret Wohlwend
CHR Solutions, Inc.
John H. Kim & Associates, P.C.
Regele Builders, Inc.
Winstead Attorneys

Peggy Plews
W. James Plews `50

Eugene Charles Raddatz `47
Virginia Drake Raddatz `39

Mo Sarwar
Barbara Duce Sarwar `56

Carrie Hollister Scheflow `46
Laura Baddaker Kee `46

Leo and Gertrude Schnur
Mary Schnur Metcalf `61

James A. Schwefel
Sandra Schwefel Massie &
Dan Massie

Susan Seippel-Grow `61
Seippel Family Foundation Inc.

Christopher Starz `01
Georgianna Starz
Jeremy Starz `97

Warren D. Sutliff Class of 1905
*(Great Grandfather to Spencer `09
and Brooke `11 Schumann)*
Arlene & Jack Schumann

J. Hobart Tucker
Robin Tornow `60

Kathryn Schnur Witzke `57
Mary Schnur Metcalf `61

Sol Wolfe `34
Thomas Kelman `81
Michael Wolfe `61

In Honor of

The donor(s) is listed below the honoree.

Bret A. Backus `84
Diana & Douglas Backus
Backus Family Foundation

Karen M. Balfe `04
Dorothy & Paul Balfe

Frederick E. Bishop `57
Howard Shapiro

**Peter Bredlau `85 &
Heather Bredlau `87**
Laurel Johnson

Alexander Derr `12
Mary & Donald Derr

Drew Doughty `14
Mary Doughty
Esther Doughty Luckhardt

Selena Erdman `12
Darlene & Richard Sack

Linda H`11 & Bob Esten `64
*(For their fine work at
the Academy.)*
Patricia & Oscar Boldt

Yifei "Cloud" Gao `14
Yunliu Gong & Rong Gao

Jane A. Goski `10
Martha Alexander `74

Ander `93 and Kristofer `95 Graff
Ingrid & Lars Graff

Tyler & Cassie Graham
Linda & Thomas Rhatican

Jan Erik Hansen `14
Sherry & Jan Eggum

Josiah Hintz `11
*(Wiseheart Cup Recipient: earning
12 varsity letters and two school
records.)*
Darby & Stanley Hintz

Anna January `08
Marilyn & Craig January

Richard H. Kimberly `54
Mary & John Sensenbrenner, Jr.

Our Granddaughter
Kirstin Lardy `12
Ardis & Leon Achterberg

Joseph A. Lennertz H`86
Ruth Sproull

Brandi Mertig `14
Karla Mertig

David Mosley `11
Dorothy VanderVeen

Helena Sophie Orendt `12
Brigitte & Gunther Fehrensén

John P. Patterson H`72
Dennis Krings-Ernst `00

Raymond A. Patterson, Jr. `40
Victor Falk III `63
George Pratt `53

Conrad Rens `11
Junice & Robert Rens

Sylvia & William Richards
Jane Richards Barker `74

Amanda Tramm `11
Lois & Werner Tramm

Steven Weiler `82
Beatrice & Alan Weiler

Dakota Wolfgram `14
Jan & Richard Caughlin

Gifts-in-Kind and Gifts-in-Time

Wayland wishes to acknowledge the many ways alumni, family and friends donate to the Academy. Whether they made an auction donation, assisted with an alumni function, helped with the Fall/Spring Family Weekends, or volunteered at the Spring Gala and Auction, Wayland is truly thankful for their commitment to the Academy.

Stephanie & Frederick Bishop `57
Jennifer Bohlig
Catherine Best & Russell Brandl
Ellen & Kevin Bruning `79
Carla Mae & Ronald Bryant
Harry Cody `58
John DeVine `87
James Downing `94
Victor Falk III `63
Connie & Ric Fiegel
John Florine `67
Eric Stanton Gefvert `73
Ken Graupner
Barbara & Paul Hartl
Vivian & William Heaney
Michelle Hebl `87
Judy H`08 & Craig Hill H`06
Darby & Stanley Hintz
James Janik `74
Anne & Scott Jones `63
Karen H`08 & Richard `54 Kimberly



The Wayland Girls Varsity Volleyball Team spent some time this fall helping out the Beaver Dam Food Bank..

Estate of Constance Koehne H`66
 Mark Koehne `78
 Susan & Robert Kuehling
 Cynthia & Michael Lardy
 Elizabeth Boucher Lee `99
 Yung Im Hwang & Jun Yeol Lee
 Kathryn Jermain Lillesand `55
 Melissa & Scott Lowell
 Dale Luck `76
 William Luedke IV `70
 John B. McKinstry H`10
 Connie & John Moran
 Janet & Harvey Mosley
 Paul Osvald H`11
 Kathryn & Steven Pals
 Elizabeth Parker `72
 Susan Peterson `63 &
 Archie Alexander
 Javier Pizarro `90
 Catherine Baratta & Julius Polesnak
 Allen Proctor `70 & Gail Walter
 Pamela & John Pryme
 Teresa & David Ptaschinski
 Eva Hartman Ptaschinski `83 &
 Thomas Ptaschinski
 Tracy & Randall Rabata
 Eileen H`11 & Karl Rauschert `47
 Cynthia & Mark Rauschert `83
 Lisa & Donald Rens
 Joseph Sackett, Jr. `83
 Rosina Samadani `85
 Judith Ronin Scherb `63 &
 Bert Scherb
 Ann & Daniel Schubert
 Frederick Schwertfeger `91
 Hilary & Sean Scott
 Cathy Seippel
 Georgianna Starz
 Brenda & Tom Stebbins
 Jane & Burnett Sullivan `69
 Virginia Teas Gill `79 &
 John Gill
 Leann Tramm
 Paul Tramm
 Dona & Larry Turner
 Michael VanHaren `82
 Roger VanHaren H`84
 Bethann & Thomas Vaubel
 Kurt Walters H`11
 Patricia & Andrew Warfield
 Terrence Wilson `02
 Judith Pickard Yeakel `47

Wayland Alumni Association Board

James R. Downing `94
 President
 Chicago, Illinois

Eva (Hartman) Ptaschinski `83
 Vice President
 Beaver Dam, Wisconsin

Trish Duez Martin `96
 Secretary
 O'Fallon, Illinois

Kristene Boucher `97
 Beaver Dam, Wisconsin

Kevin Bruning `79
 Crystal Lake, Illinois

John Devine III `87
 Chicago, Illinois

Jordan Esten `02
 Hanover, New Hampshire

John Florine `67
 La Crosse, Wisconsin

Eric Gefvert `73
 Elkhorn, Wisconsin

Lizzy (Boucher) Lee `99
 St. Petersburg, Florida

Kathryn (Jermain) Lillesand `55
 Madison, Wisconsin

Javier "J" Pizarro `90
 Peoria, Arizona

Joseph Sackett `83
 Libertyville, Illinois

Fred Schwertfeger `91
 Wauwatosa, Wisconsin

Mike VanHaren `82
 Past President
 Brookfield, Wisconsin

Terrence Wilson `02
 Chicago, Illinois

Wayland Academy Parents Council

Ellen and Kevin Bruning `79
 Co-Chairs
 Crystal Lake, Illinois

Tracy and Randy Rabata
 Vice-Chairs
 Beaver Dam, Wisconsin

Virginia Teas Gill `79
 Bloomington, Illinois

Cindy Lardy
 Montello, Wisconsin

Jeneen and Richard Lomax
 Chicago, Illinois

Connie S. and John Moran
 Chicago, Illinois

Mary Ostermann
 Beaver Dam, Wisconsin

Ann and Dan Schubert
 Beaver Dam, Wisconsin

Bethann Vaubel
 Green Lake, Wisconsin

Julie Wahl
 Reeseville, Wisconsin

Tom Willihnganz
 Beaver Dam, Wisconsin

The 2010-2011 Parents & Grandparents Fundraising Challenge

Raised
\$369,162

Goal
\$150,000

An Evening at Wayland

Spring Gala and Auction

The list of names in this section includes all who donated cash or auction items, and those who purchased auction items at Wayland's largest fundraising event of the year – An Evening at Wayland: the Spring Gala & Auction. The 2010-2011 Spring Gala and Auction generated \$67,093.00 for the Academy to upgrade technology on campus.

Martha Alexander `74
Debbie & Dan Auger
Kristina & Roger Bacci
Abisola & Olushola Bakare
Ardeth Bayley
Stephanie & Frederick Bishop `57
Tom Boldt
Jennifer & Daniel Booker
Nancy & Kris Boucher H`90
Ellen & Kevin Bruning `79
Jeffrey Calder
Kelly Cantley `81
Trisha & Alan Ciochon
Mary & David Clark
Lana & Michael Clark
Mari & Robert Cleary
Janice & Andrew Coulson `64
Judith & August Crivolio
Linda Darling
Connie & Raymon Darling
Mary & Donald Derr
Lisa & Michael Derr
George Dowell
Mark Duffy `79
Linda Spaans Esten H`11
Susie Everson
Jeanne & John Faber
Maxine & James Ferron

Tracy & Todd Ferron
Sue & Troy Ferron
Connie & Ric Fiegel
Christina & Mark Fogarty
Dorothy & Karl Forsgren
Mary & John Franklin
Stephanie & Todd Franklin
Susan & Douglas Ganske
Louis Ganske
Yunliu Gong & Rong Gao
Donna Greenacre
Maria & Rolf Grefe
Debra & Carl Guse
Diane & Craig Haberman
Jennifer & John Harris
Judy H`08 & Craig Hill H`06
Darby & Stanley Hintz
Dorothy & John Imse
Trent Jackson
Karen & Larry Janisewski
Suzanne Filut & Peter Jensen
Christa Johnson
Martha Kesler H`08
Myoung Suk & Sung In Kim
Karen H`08 & Richard `54 Kimberly
James Kirsh `71
Sue & Terrill Knaack `68
Katherine & Josh Koepsell
Mary Sue Schnell &
Richard Krejcarek
Sara Kropp
Keely Lake
Cynthia & Michael Lardy
Keith Lauth
Randall Lawton `63
Onnie Leach Smith
Joseph Lennertz H`86
Yifang Zhong & Chunming Li
Melissa & Scott Lowell
William Luedke IV `70
Jan & Steve Malin
Beverly & Alan Martens
Kathy & Douglas Mathison
Toni McBride
Rebecca & Kenneth Melchert
Ryan McClone
E. Gertrude Miller
Mackenzie Miller `11
Kimberly & Rodney Miller
Gloria & Scott Miller
Connie & John Moran
Janet & Harvey Mosley
Megan Vanderveen Mosley
Maureen & James Neitzel
Kelly & Donald Neuert
Shannon & Randy Neuman
Philiomena & Friday Odiase

Mary & Kenneth Ostermann
Elizabeth Parker `72
Helen Perry
Nancy & Gary Petersen
Susan Peterson `63 &
Archie Alexander
Samuel Pickard `51
Robin & Scott Posnanski `86
John Powless
Pamela & John Pryme
Eva Hartman Ptaschinski `83 &
Thomas Ptaschinski
Mr. and Mrs. W.E. Purdum
Tracy & Randall Rabata
Kathy & Curtis Radford `73
Elizabeth Ratajczak `96 &
Tyler Ratajczak
Jeffrey Rauscher `09
Mary Vogl-Rauscher &
Thomas Rauscher
Cynthia & Mark Rauschert `83
Lisa & Donald Rens
Katherine Rinsched
Betty & Saul Rosenbaum
Holli & Robert Ruegger
Rosina Samadani `85
Josh Schaalma
Renee & Lenny Schaalma
Rose Schaalma H`10
Judith Ronin Scherb `63 &
Bert Scherb
Lisa & Michael Schneider H`86
Ann & Daniel Schubert
Jo & Mark Schumann
Hilary Bishop Scott
Melanie Sherman Eirich &
Philipp Eirich
Michelle Bibergal &
Frederick Snow `73
Georgianna Starz
Jeremy Starz `97
Brenda & Dennis Steinkraus
Connie & Dave Stelsel
Carole Fishelson Stone `62
Jane & Burnett Sullivan `69
Nancy Swanson
Virginia Teas Gill `79 & John Gill
Julius Temkin
Leann Tramm
Blake Tonn
Camille Turk
Dona & Larry Turner
Jessi & Michael VanHaren `82
Marilyn & Roger VanHaren H`84
Bethann & Thomas Vaubel
Sue & Darryl Voigt
Julie & Dean Wahl

Elizabeth Burnham Wallman `71
 Patricia Walton
 Almaz Whyte
 Kim & Thomas Wiersma
 Lorna & James Will
 Kerry & Paul Wolfgram
 Judith Pickard Yeakel `47
 Loryn & Steven Zangwill
 A-1 Tri-County Vacuum &
 Sewing Center, LLC
 Advanced Cosmetic Solutions
 Air Care, Inc.
 AmericInn of Beaver Dam
 AmericInn of Waupun
 Arby's
 Augustana College
 B & B Wood Floor Refinishing
 Badger Sporting Goods
 Company Inc.
 Beaver Dam Community Hospital
 Beaver Dam Women's Health
 Beloit Snappers
 Benvenuto's Italian Grill
 Best Western Campus Inn
 Black Waters Coffee Co.
 The Boldt Company
 Boston University
 Butler University
 Calvin College
 Cave of the Mounds
 Chill Zone Liquor
 Coe College
 Colgate University
 Color eXhibition
 Columbus Country Club
 Cousin's Subs
 Creative Marketing Specialist, Inc.
 Dells Boat Tours
 Design Advertising
 Domino's Pizza
 Dos Gringos
 Drs. Esser, Krueger & Borja
 Ebert's Greenhouse Village
 Edgewood College
 Excel Orthopedics
 Extreme Aquatics
 Floral Expressions
 Gene's Beaver Floral
 General Beverage Sales Company
 Glasgow Photography
 Gordon Flesch Company Inc.
 Green Bay Packers
 Harbor Shores
 Heartland Litho
 Heidelberg House Resort
 Hendrix College
 Horicon Bank

Inter-Quest Corp.
 Jimmy John's Subs
 Johnson Sausage
 Johnson School Bus Service, Inc.
 Julie Zahn Photography
 Kessenich's Ltd.
 Kestrel Ridge Golf Club
 Knox College
 Kornely's Craft Center
 Kwik Trips of Beaver Dam
 Lafayette College
 LeRoy Meats of Horicon
 Lincoln College
 Luther College
 Madison Mallards
 Maertz & Haase Construction, LLC
 Malibu Tan, LLC
 Marian University
 Marquette University
 McClone Insurance Group
 McKinstry's Home Furnishing Inc.
 Milwaukee Brewers Baseball Club
 Milwaukee Bucks
 Milwaukee Public Museum
 Minnesota Vikings
 Mount Olympus Water &
 Theme Park
 National Railroad Museum
 Neuman Pools Inc.
 Nielsen Massey Vanillas Inc.
 Nike Tennis Camp
 Noah's Ark Family Park Inc.
 Northwestern University
 Old Hickory Golf Club
 Original Wisconsin Ducks
 Park Plaza Pizza, Inc.

Piggly Wiggly
 Ptaschinski Construction
 Regis University
 Reinders Inc.
 Ripon College
 Rock River Hills Golf Club
 Schultz's Cheese Haus
 Seippel Family Foundation Inc.
 Shedd Aquarium
 Silica Appliance & TV
 Soccer Sport Supply Company Inc.
 Sodexo Dining
 Sodexo Facilities
 St. Ambrose University
 St. Olaf College
 Super 8 Motel
 Super Lube
 Syracuse University
 Taylor Rental Center
 Tonn Pest Control
 Top Secret, Inc.
 University of Wisconsin – LaCrosse
 Verlo Mattress Factory Store
 Vineyard
 Viterbo College
 Walcott Studio
 Walgreens
 Walker's Restaurant
 Walt Disney World Co.
 Washington University
 Wheaton College
 White Gull Inn
 Wooster College
 YMCA of Dodge County



WAYLAND ACADEMY

Board of Trustees

2010-2011



Susan A. Peterson `63
Trustee Chair
President and CEO
The Communication Center
Washington, D.C.



Allen J. Proctor, Ph.D. `70
Vice Chair, Treasurer
Financial Services Consulting
Worthington, Ohio



William T. Luedke IV `70
Vice Chair
Partner
Bracewell - Giuliani LLP
Houston, Texas



Elizabeth W. Parker `72
Vice Chair
President
Caribe Direct, Inc.
San Juan, Puerto Rico



Scott Lowell
Secretary
Partner, Lowell Management
Services, Inc.
Lake Geneva, Wisconsin



Harry "Skip" Cody `58
President
Multicolor Specialites, Inc.
Cicero, Illinois



Victor Falk `63
Retired
Key Largo, Florida



Michelle Hebl, Ph.D. `87
Professor
Rice University
Department of Psychology
Houston, Texas



James L. Janik `74
President and CEO
Douglas Dynamics, LLC
Milwaukee, Wisconsin



Richard H. Kimberly `54
President
Kimberly Consulting, LLC
Washington, D.C.



Robert W. Kuehling
Member
Kuehling & Kuehling, LLC
Madison, Wisconsin



John B. McKinstry H `10
Retired
Beaver Dam, Wisconsin



Mark C. Rauschert `83
 President Midwest Control
 Products Corporation
 Bushnell, Illinois



Rosina Samadani, Ph.D. `85
 President
 Capella Advisors
 New York, New York



Judy Ronin Scherb `63
 Director of Financial Services
 Ameritus
 Chicago, Illinois



Hilary Bishop Scott
 Trustee
 Stephanie L. and Frederick E.
 Bishop Family Foundation
 Chicago, Illinois



Georgianna S. Starz
 Owner/Executive Director
 Camp Nicolet, Inc.
 Eagle River, Wisconsin



Burnett G. Sullivan `69
 Retired
 Mahtomedi, Minnesota



Michael C. VanHaren `82
 Data Sales Consultant
 Midwest Region Quad Direct
 Brookfield, Wisconsin

Trustee
 Emeriti



Frederick E. Bishop `57
 Executive Vice President
 Bishop Consulting Services
 of Illinois, Inc.
 Glencoe, Illinois



R. Scott Jones `63
 Jones Consulting Group, Inc.
 Red Wing, Minnesota



Ray Patterson, Jr. `40
 (Honorary)
 Deceased
 Sugarland, Texas



Karl A. Rauschert `47
 Retired President
 Midwest Control Products, Inc.
 Bushnell, Illinois



Judith Pickard Yeakel `47
 Retired
 Langley, Washington



Wayland Academy's Mission

To prepare young people for a successful college experience and a rapidly changing world by opening their minds to the pursuit of knowledge and their hearts to the development of strong character.

Wayland Academy's Vision

The Wayland Academy of tomorrow will establish an extraordinary reputation and receive national recognition as the leading coeducational college preparatory school in the Midwest. Wayland will have a fully engaged faculty and student body, unified in spirit and mind, reaching the full potential of its motto Knowledge and Character. Wayland Academy's remarkable faculty and staff along with the active involvement of Trustees, alumni, parents and friends, will educate students in modern facilities designed for effective learning, using advanced teaching tools and methods, putting Wayland in the vanguard of national educational initiatives.



An
at Evening
Wayland

*Wayland Academy presents the
36th Annual Spring Gala & Auction
Saturday, April 21, 2012*

*Please check back at www.wayland.org for
future details of this event.*