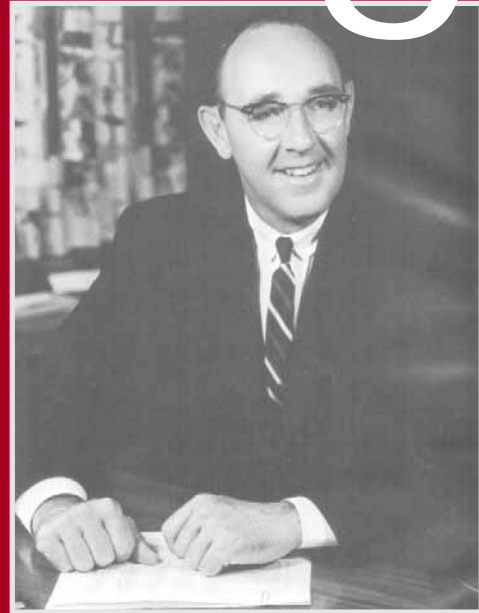


WAYLAND
ACADEMY

Greetings

Honoring a
Legend:
*Raymond A.
Patterson Jr. '40*

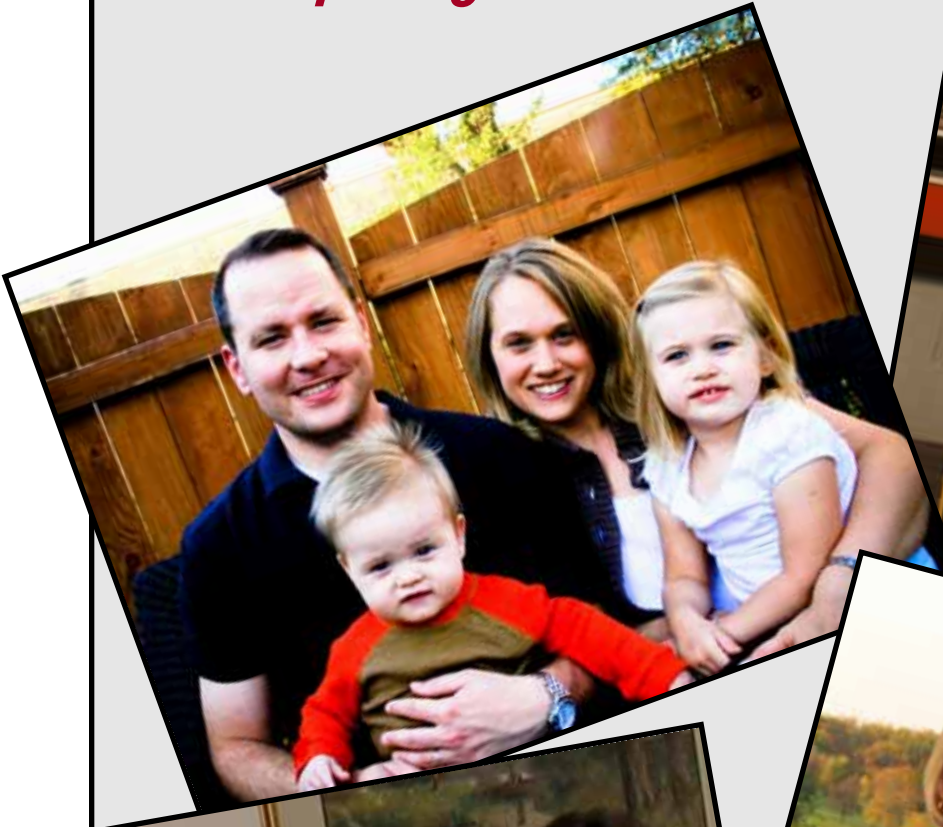


Why We Give ...



Annual Report 2009-2010

*Why We Give:
Six Inspiring Donor Stories*



ANNUAL REPORT *of the* President

I am pleased to submit this summary report for the year 2009 - 2010. The Academy has faced many challenges throughout its history, and this year was not without its struggles. The economy, increased expenses to maintain quality faculty and programs, and continued infrastructure demands on campus stressed our budgets. Our goal is always to provide the best college preparatory program we can. Once again, we met our students' needs and had a successful year.



Mike Machkovech '67, Trustee Chair Susan Peterson '63, Interim President and Academic Dean Joe Lennertz H'86, and David Harvey at a Wayland Gathering at the residence of Dr. Mikki Hebl '87 (not shown) and her husband David Harvey in Houston, Texas, to honor Ray Patterson Jr. '40.

Academic Highlights

- The AP curriculum added one additional course this year – U.S. Government and Politics.
- Two of our current faculty members began working on advanced degrees this year.
- Nicholas Derr `10, the Valedictorian of this year's senior class, earned a National Merit Scholarship in the 2010 Competition and is now attending the University of Wisconsin-Madison.
- Four members of the class of 2011 were named qualifiers by the National Merit Scholarship Corporation. Out of 1.4 million participants nationwide, these four Wayland students earned among the 50,000 highest scores.
- AP scores from the May examination period showed that 76% of the scores were 3, 4, or 5. Scores of 3, 4, or 5 are considered passing, and most colleges and universities use 3 as the minimum score for credit. (100% of our AP students take the exams.)



Randall Harris `13, Connor Fitzgerald `13, and John Moran `12 studying in Swan Library

- Commencement was once again the high point at the end of the year. 65 members of the class of 2010 received diplomas in May. There were many success stories in the class of 2010, and the seniors expressed their gratitude before leaving campus. The speakers in Senior Chapel and Commencement had many overlapping views on their time at Wayland, and many senior tears were shed. While it was a tough road for many, the prize at the end made the journey worthwhile.
- The school year ended on a particularly high note with one of our

newer traditions: the Wayland Film Festival on the Saturday night before Commencement. This year's edition showcased the talents of the Wayland student body. The festival included many comedy sketches and in particular, a stop-animation piece that was superb.

Admissions

Admissions continued to be challenged by the economy. Many families expressed interest in attending the Academy and the Admissions staff worked diligently to overcome obstacles to enrollment. Our retention rate was 88% for returning students, the highest rate in the last 15 years. The good retention rate proves that the Academy is continuing to meet the needs of our students in the academic, residential, and athletic programs.

63 of the 65 graduates in the class of 2010 have chosen to attend college or university this coming year, and two graduates are deferring their enrollment for the year. The class of 2010 submitted 528 applications. Some of the notable admissions were from Brown, Yale, Wellesley, Carnegie Mellon, the Coast Guard Academy, West Point, Tulane, Colgate, Davidson, Dickinson, Macalester, Emory, University of



Lindsey Knoll `12, Bryanna Sanders `13, David Hayes `12, and Nick Osterman `13 study outside the Academic Center on the Ann Nelson `89 Memorial Bench

Michigan, NYU, Northwestern, Reed, University of Richmond, and Smith.

Finance & Technology

The 2009-2010 fiscal year presented challenges due to a decrease in enrollment and the subsequent decrease of net tuition. By October 2009, we had reduced our budgeted expenses to meet the shortfall. Our revised budget projected a modest surplus.

In spite of tight budgets, we made significant upgrades in technology on campus.

- The campus-wide network has been completely reconfigured, removing a number of inefficiencies that should improve the overall traffic on the network resulting in faster response times for programs. This also allowed us to finish the filter integration project, which is now filtering all networks.
- A new Web site for the school is currently slated to go live in early 2011.
- We continued to expand the wireless coverage on Campus. Eventually the entire campus – including the Field House – will have network and Internet access.



James Cleary, a new staff member, teaches English and helps out in the IT Department

- Our new on-campus IT staff member, James Cleary, is a welcome addition to our team. He will help increase the support and effectiveness of desktop usage for staff and faculty.

Athletics

Student participation on our athletics teams continued throughout the year. Our Wayland athletes continued to show great sportsmanship and strong character. Compliments from opposing teams and referees about the quality of play and sportsmanship were gratifying. Each season, our teams recognize not only good play and improvement, but the most coveted award is Champion of Character.

Some notable student athletic highlights at the end of the year were junior Anne Rauschert's 6th place

finish in the high jump at state competition for the third straight year, and sophomore Michael Vaubel's journey to the sectional golf tournament. He missed advancing to state by three strokes.

Development

Wayland Academy's 2009-2010 internal overall fundraising goal (including gifts to *The Academy Fund*, The Wayland Hall Renovation project, endowments, scholarships, and other programmatic support) was \$1.5 million. Thanks to the generous support of donors, we raised \$1,554,588. *The Academy Fund*, which provides annual unrestricted money, exceeded its \$550,000 goal by raising \$588,951. Wayland Hall fundraising also continues to be successful. Of particular note is the increase of alumni participation to 21%. Also encouraging is the new Parent & Grandparents fundraising challenge which exceeded its goal of \$150,000 by raising \$156,172.

Conclusion

As you can see, Wayland Academy provides a solid college preparatory program to all of our students in spite of seemingly endless challenges. Our graduates go on to colleges and universities throughout the world and become successful members of society. We enjoy the generous support of our extended community. The Academy, with your ongoing support, will continue to graduate future leaders in the tradition of Knowledge and Character.

Sincerely,

A handwritten signature in cursive script that reads "Joseph A. Lennertz".

Joseph A. Lennertz H'86
Interim President and Academic Dean



Choir Director Chris Mientus and the choir rehearse in Kimberly Chapel

Honoring a Legend: Raymond A. Patterson, Jr. '40 Headmaster from 1953-1970

Former Wayland Headmaster Ray Patterson, Jr. '40 and his wife Ruth H'10 were honored at a Wayland Gathering hosted by Trustees Mikki Hebl '87 and Will Luedke IV '70, at Hebl's residence on November 3, 2010. Ruth was given an Honorary Wayland diploma for the many years she spent on the Wayland Campus assisting Ray in many capacities. Trustee Chair Susan Peterson '63 presented Ray with an historic proclamation, which bestowed upon him the status of President Emeritus and Honorary Trustee.

Ruth and Ray have five children: Raymond (Pat) '69, Steve '75, Elizabeth (Liz), Margaret (Peg), and Pete. During their time at Wayland, the school saw an unprecedented period of expansion in enrollment, physical plant, and national reputation. Please read the following story regarding Patterson's tenure at Wayland Academy, which covers 1949-1970. This article was taken from "The Sesquicentennial Story."



The Proclamation presentation, Trustee Chair Susan Peterson '63, Ray Patterson, Jr. '40, Tom Nissalke '51, and Trustee Richard Kimberly '54

Perhaps one of Weimar Hicks' greatest talents was recognizing talent in others. No case better illustrates his sense of aptitude in employees than his move to promote Ray Patterson, Jr. '40 to administrative prominence only three years after Patterson's hire as a coach and teacher in 1949. This young, ambitious, and successful employee-

alumnus already had success in coordinating Alumni relations for the upcoming Centennial, and his skills in admissions and fundraising made him the perfect choice to succeed Hicks in 1953. The Patterson years would then become one of the most successful eras of enrollment, gift-giving, and physical plant development in Wayland history.

While a student at Wayland, Ray Patterson had been active in football, basketball, track, drama, choir, and student government. At the University of Wisconsin, he was named an All-American in basketball. He joined the Wayland faculty as a science teacher and coach, but Hicks quickly delegated many tasks to him that involved the inner workings of



WAYLAND ACADEMY

Proclamation

Whereas, Raymond A. Patterson is a distinguished alumnus of the Class of 1940 who served Wayland Academy as teacher, coach, and President from 1949 to 1970, and

Whereas, his commitment to excellence supported a faculty and staff of unparalleled quality and dedication to Wayland, and

Whereas, his vision led Wayland through an unprecedented period of expansion in enrollment, physical plant, and national reputation, and

Whereas, his passion for Wayland fostered exceptional financial support from alumni and friends, and

Whereas, his foresight constructed the chapel, science building, two Dye dormitories, dining hall, field house, theater stage, and athletic fields in which Wayland's motto of knowledge and character is demonstrated daily, and

Whereas, his achievements place his presidency among the ranks of Wayland's great presidents,

Therefore, be it resolved by unanimous vote of the Board of Trustees,

Wayland Academy joyfully and gratefully bestows the title

President Emeritus

on

RAYMOND A. PATTERSON, JR. '40

and

Be it further resolved, the Board of Trustees welcomes

Raymond A. Patterson into its ranks as

Honorary Trustee

Granted this third day of November, in the year 2010, and the
155th year of Wayland Academy.

Susan A. Peterson '63
Chair, Board of Trustees

Joseph A. Lennertz H'86
Interim President and Academic Dean



Ruth Patterson H'10 could not be at the presentation. Therefore, it was arranged for her to receive her honorary diploma via Skype. Seated are Trustee Richard Kimberly '54, her son Pete Patterson, and Trustee Chair Susan Peterson '63.

the Academy. When he eventually succeeded Hicks as headmaster, Patterson made clear that his administration was a continuation of the initiative and principles of Brown, Ross, and Hicks. Nevertheless, the individual stamp that he placed on the Wayland campus remains today.

Patterson's ability to attract students to the Academy is reflected in the staggering growth in enrollment over his administration. In 1956, enrollment reached 240, representing twelve states and five foreign countries, including Puerto Rico, Guatemala, Saudi Arabia, Greenland, and the Bahamas. In the fall of 1957, enrollment reached 265, considered "maximum" by the board. There were 109 students in both Wayland Hall and Warren Cottage, and six boys and seven girls were housed in off-campus rooms. When classes opened in the fall of 1963, there were 290 students and 32 faculty (including a second headmaster). A report in summer 1966 projected an enrollment of 400 students by 1975. Although this prediction did not prove valid for

various reasons, Patterson's formation of a flourishing Academy of national renown is illustrated in these numbers alone.

Perhaps even more staggering, though, was his ability to attract funds for new and high quality buildings and repairs to the physical plant. After becoming headmaster, one of Ray Patterson's first duties was to oversee the completion of the Centennial Campaign, which had set an ambitious goal of \$400,000; furthermore, under Patterson's direction, the Annual Giving Fund reached \$30,000, which was \$5,000 above its goal. Over his nearly two decades of leadership, Patterson tended to providing the necessary new construction along with major remodeling and redecorating on campus.

With the growing numbers in enrollment, Patterson realized that a major requirement for the Academy was finding new dormitory space for the students. During his tenure, Patterson oversaw significant

renovations to Wayland and Warren Cottage. However, his most ambitious and influential move was to enable the Academy to build two entirely new dormitories named appropriately for one of Wayland's most prominent family sponsors: Ella and Glen Dye (both class of 1907). These dorms today are the staple living space for faculty and upperclassmen.

Living space was not the only thing in demand with the burgeoning Academy; the school also needed more classroom space. By 1961, the remodeling of Linfield had been accomplished. Patterson set in motion a dynamism that would culminate in the formation of the Academic Building in the 1980's, a modern school building fully equipped for a full-size learning institution.

Besides the need for new classrooms and dormitories, Wayland needed a worship space large enough to seat the entire student body and faculty. Plans for a new chapel began. In December 1957, a three-year capital fund campaign was announced,



Ray as a choir member

kicked off by an appeal from Sol Wolfe '34, a new member of the faculty. By June 1958, the drive to raise \$300,000 had reached its halfway point, and construction of the chapel was to begin in July. On May 20, 1959, the first service was held in the chapel. The first Baccalaureate to be held in the new Memorial Chapel featured former principal, Stanley Ross, as speaker and included a ceremony honoring Marion Mitchell for forty years of faithful service to the Academy. Today, the building is named Kimberly Chapel in honor of one of Wayland's most devoted alums – Former Chair and Trustee Richard Kimberly '54.

Patterson's commitment to upholding the spiritual and academic goals of his predecessors did not outweigh his desire to see the Academy's athletic program prosper. When the new school year started in 1964, compulsory sports participation became a reality for students. And, of course, the Academy needed more space for the expanding Athletic Program.

In January 1960, Wayland bought the Dodge County Fairgrounds. The purchase price for the 33-acre parcel was \$125,000. The Dodge County Fair had been our neighbor across the street since 1867. In 1905, when Wayland celebrated its Golden Anniversary, some of the events were

held in the Arts Building at the fairgrounds, and Wayland played its football games on the field at the fairgrounds from 1891 to 1921. The fair had been known as "The World's Greatest County Fair," and racing trotters and pacers came from all over the United States for the horse races. Unfortunately, the fairground's grandstands and several other buildings burned down in 1958.

At the time of the purchase, Wayland had no immediate plans for the land, but Patterson later sold seven acres of the old fairgrounds to local doctors to build new clinics, and, with the remaining 26 acres, developed football, soccer, and field hockey fields, a running track, and baseball and softball diamonds. By January 1966, plans and models were prepared for an athletic facility to be built on what is now called "South Campus." By the fall of 1967, the Field House (originally called The All-Purpose Building and, affectionately,



Interim President and Academic Dean Joseph Lennertz H'86 joined a group of alums at the residence of Dr. Mikki Hebl '87 in Houston, Texas, to honor Ruth H'10 and Ray Patterson, Jr. '40. Shown above are Laurie (Mintz) Karkowsky '87, Lennertz, Hebl, and Vice President of Development Trent Jackson.



Ray as a member of the football team (#58)

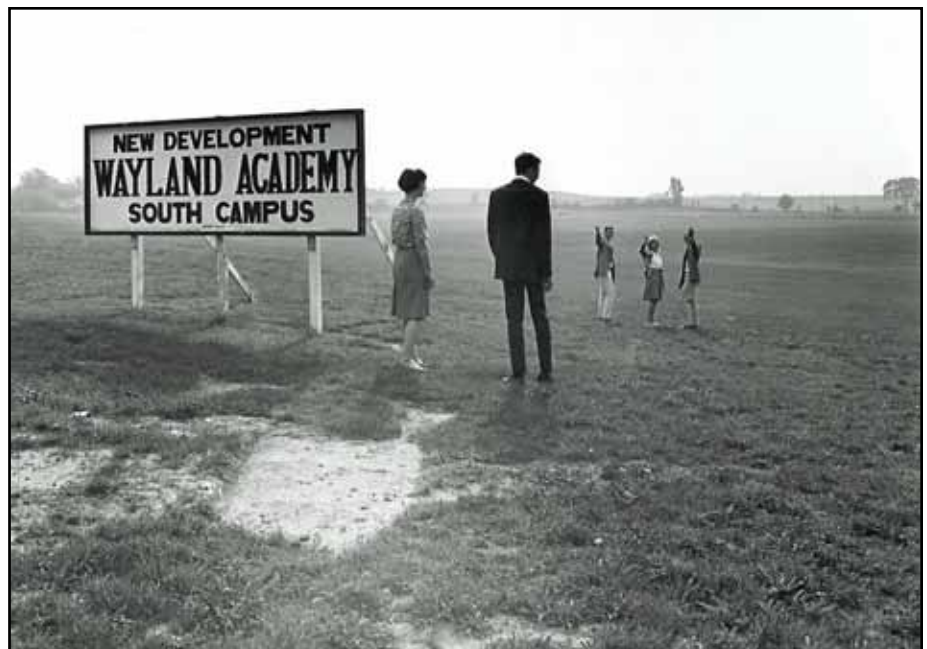
Patterson's Bowl) was completed with a Tartan surface (a synthetic resin), and new tennis courts were completed.

Patterson was as ambitious in raising money as he was in using it for Wayland's growth. For example, he was instrumental in generating interest and momentum in Wayland's most ambitious capital campaign. It was called the "Program for Progress." In 1964, Glen and Ella Dye offered to match every dollar raised over \$475,000 in the capital fund drive with two dollars of their own up to a maximum of \$50,000. By the summer of 1964, the construction of the stage addition was underway. Mr. Patterson announced that the fund drive had reached \$508,825 in gifts and pledges, and that, with the matching gift from the Dyes for \$50,000, a \$35,000 gift from the estate of George Griswold, and an \$8,000 bequest from the Griswold estate, the total for the campaign was at \$601,825.

Over the ten-year period from 1954

through 1964, Wayland spent over a million dollars on the construction of Pickard Dining Hall, Memorial Chapel, Glen Dye Dorm; the purchase of the Fairgrounds and Chapel organ; the remodeling of Linfield Hall; an addition to Lindsay Gym; and renovations to Warren Cottage and Wayland Hall. And yet,

many of Patterson's major additions to the physical plant came in the late 1960's. The breathtaking changes in the Wayland landscape during the Patterson Administration are topped only by the fact that, when Patterson finally left Wayland, the school was not one dollar in debt.



Patterson was not only the right man in the right place, but also, he was the right man at the right time. Wayland's Centennial Celebration was an amazing experience for all involved, and it set the tone for the next fifteen years of his leadership. The event began with the Centennial Homecoming, October 29-30, 1954. "Huge spotlights illuminated the exteriors of all the buildings. A twenty-five foot lighted red-and-white 'W' adorned the outside entrance of the girls' gymnasium. A three-by-fifteen foot sign beamed 'Welcome' over the entrance to the new gym. Brilliant white lights glowed atop old Wayland Hall, accentuating the beautiful cupola that adds distinction to that building; and the classic pillars, too, were brightly lit ... Even the weatherman smiled on us with just the right weather – clear and brisk." Effigies, a talent show, a band concert, a bonfire, and a pep rally were featured. The very popular Eddy Howard dance band played for the homecoming dance. Best of all, perhaps, was that Wayland won the football game 20-19 against fierce rival, Milwaukee Country Day. In January 1955, a picture of Wayland Hall appeared on the page for the Month of May in the Wisconsin State Historical Society's 1955 Calendar. The Centennial Reunion had drawn over 900 people to campus.

Riding the tide of momentum from the hundredth anniversary, Wayland arranged to host the nationally-aired broadcast of ABC Radio's "America's Town Meeting of the Air" as part of the annual conference of the Headmasters of the Private Schools Association of the Central

States was holding on campus. This broadcast drew national attention to Wayland during its Centennial year. At first glance, it seems that Patterson's greatest attributes were in the field of business and basketball, for he went on after Wayland to run the NBA Bucks and Rockets; however, he was no less of an intellectual than his predecessors at Wayland. Sensing the need to further his graduate education, he requested a one-year leave of absence to do graduate work at the University of Wisconsin. Thus, in 1959-1960, A.E. Wichman, our famous chronicler, was



Frank Lindsay, Ray Patterson Jr. '40, and Sam Pickard '16 going over plans for a new development.

appointed "acting headmaster." During this year, all music classes were moved to the lower level of the new chapel where there were ten new practice pianos. Administrative offices (except for the headmaster) were moved from Linfield Hall to Roundy Hall. Wichman's further honors came when, in 1963, The



Ray as basketball coach



Ray as a member of the basketball team (#21)

Wayland Story: Past, Present, and Future was aired on Channel 10 WMVS-TV. In 1967 the venerable Alton E. Wichman retired, bringing to an end 45 years of dedicated service to the Academy. During his years at the school, he served as a history teacher, Dean of Boys, Dean of Guidance, acting headmaster, and local historian. At the 1969 Commencement exercises, A.E. Wichman was presented the Distinguished Service Citation, honoring his 45 years of service to the school.

Patterson resumed his role at Wayland in 1960 and continued his success in attracting the greats with speakers, sports camps, and other lecture series throughout his administration. In the spring of 1966, Wisconsin Governor Warren Knowles, U.S. Senator Bill Proxmire, and Representative Melvin Laird (whose son was a student) spoke on campus. In the spring of 1967, the All-American Sports Camp was announced. Marquette University coach Al McGuire headed the coaches' clinic, which included John Wooden of UCLA, Bud Foster of Wisconsin, Adolph Rupp of Kentucky, Dave Strack of Michigan,

and John Erickson of Wisconsin. One-hundred twenty boys attended the camp. The following year would attract Nick Bollettieri, a famous tennis professional from Florida. Bollettieri would later go on to international fame as Andre Agassi's personal coach.

The Milwaukee Bucks announced that they would hold their rookie training camp and tryouts at the Field House in 1969. The camp was to be conducted by head coach Larry Costello and his assistant, Tom Nissalke, Wayland class of 1951, and former teacher and coach at the Academy. Nissalke would go on to become a successful head coach in the NBA.

Meanwhile, for the last ten years of his administration, Patterson encouraged a new lecture series called "Man and His World." Seniors were required to attend and take notes. There were two lectures per year delivered by college professors and deans from Midwest colleges and universities and Princeton University. The public was also invited. This move reflected Patterson's philosophy of education, which stressed the need to channel young people on

appropriate lines while listening to and responding to their needs as adolescents.

Patterson's philosophy stressed three fundamental goals: one, education should have a sense of history; two, students should be encouraged to be creative; three, the school needed a solid sense of morality. He strove to include the voice and interest of the students as much as possible, yet his sense of the need for change in the 1960's was balanced with the belief that all experiments and innovations must be measured against "strong and sturdy directional lines to be used as common bonds of

understanding among faculty and students." He was a perfect blend of liberalism and conservatism at a time when the country and world were experiencing what Dr. William J. McCutcheon, former Wayland pastor and Wayland historian, has appropriately termed "turbulence."



Patterson made other innovations in the curriculum as well. In 1957, Wayland's first Teacher's Handbook, authored by David Proctor H'07, was given to the faculty. Then, Wayland, in order to standardize its admission policies, aligned itself with Educational Testing Service and began administering the Service's Secondary Admission Test. The campus also became the regional center for administering the test. Advanced Placement courses in English, mathematics, chemistry, and history were added to the curriculum in the 1957-58, school year, a tradition that has continued and grows to this day.

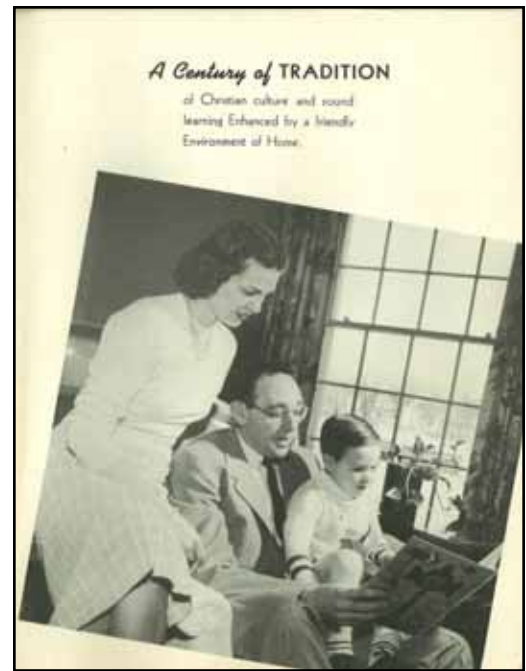
In 1962-63, Patterson introduced Saturday classes and an eight-period day as well as three new courses: history of Asia, psychology, and philosophy. He formed teacher teams in science and foreign languages. Keeping the level of journalism high, in the spring of 1963, the Wayland Post won a national first place rating for school newspapers from the Columbia Scholastic Press. During the 1954-55 school year, Patterson began the class counselor program, the pre-cursor of the mentor program currently in effect, as well as a comprehensive testing program.

Patterson also reported that the Dye Family Foundation had established a "Religion in Education" program at Wayland. The Foundation made a five-year commitment of \$25,000 per year. The Dye Chair of Religion, as it is now known, grew out of that gift and has been in existence since January 1966. To this day, there is a weekly chapel service and opportunities for religious dialogue and private worship throughout the academic week.

Patterson was truly one of the great Wayland leaders, and his statistics in enrollment, endowment, and curriculum development alone prove the point. Furthermore, the fact that the NBA sought him out as the type of leader necessary in a culture now

ruled by professional sports demonstrates the strength of his abilities. However, the history book remains somewhat powerless in touching the intangible qualities of his charisma and aura that inspired and motivated others to do their best and make Wayland the best.

Ray Patterson, Jr. '40 was that rare personage, a man possessed of charisma, wisdom, kindness and vibrancy that, having touched Wayland for two decades in person, would somehow continue to improve the school for decades after his departure.



It takes a special type of person to be a long-term Wayland teacher. The line between work and life is thin and sometimes non-existent. Your days are filled with teaching, grading, mentoring, coaching, dorm duty, preparing to teach, more grading, and just as the weekend arrives, you will remember that you have weekend duty. In a busy week, you will work well over 80 hours. You might hit 100. You will refuse to count, if you are smart. You will build a new family every year. You will say goodbye to a fourth of it, every year.

You will begin to count the days to summer, only to have summer hit, look around, and say, where did everyone go? You might complain that summer moves too quickly, time itself seems unfair, but there will be some part of you that is excited for summer to be over. To get back in the classroom. To get back in the dorm. To get back on the court or out on the field. To see what comes next.

There are many Wayland teachers for whom we are thankful. Some still teach here, some have moved on, and some have retired. This article will focus on four Wayland teachers who still teach, coach, supervise, and participate in the many activities that come with the job. Mitch Disch, Diane Alpaugh, Jim Borrud, and Mike Schneider have worked at Wayland for a collective total of 130 years, and they continue to help make the school a wonderful place for students to live and learn.

Four Pillars of the Academy



Mitch Disch H`93

Mitch Disch has an excellent sense of humor. There is no easy way to quantify humor, but it is highly probable that he has the best sense of humor of any physics teacher in the entire United States, Asia, and most of Europe. Perhaps the world. This is fortunate, because he takes a lot of ribbing from the students, who like to ask him what it was like to go bowling with Jesus. What was Moses really like... what it's like to have a

dinosaur for a pet... if he first became interested in physics while watching the Big Bang occur, firsthand... that type of thing.

Contrary to popular student myth, though, Mr. Disch has only been at Wayland since 1982. Apart from a five year hiatus in Louisiana, Disch has been Wayland's physics teacher for the past three decades. The things that keep him here, he says, are simple: "It's a great school, and we've got good kids and it's fun to work here." Beyond that, though, is

his underlying, genuinely contagious interest in his subject matter.

He says that physics appeals to him because, "it's neat to take math and apply it to the real world and find out if it means something. There's no reason it should." He describes it as a genuine miracle.

Another reason he loves teaching physics, though, is that he gets to do lots of "cool demonstrations" that he ticks off

the way most people can list the things they do at work. His list is more interesting than most, though, and includes activities such as "lying down on a bed of nails, a rock and roll laser light show, pounding a nail through a one-inch board with my hand... a variety of explosions."

In addition to teaching, of course, his time at the school has included all manner of duty in the dorms, around campus, and coaching football. Like many long-term teachers, he's also been a parent whose children eventually attended Wayland. His son



Mitch Disch H`93

Jacob graduated in 2004 and his daughter Hilary graduated in 2001. "Neither wanted to come here," he says, "but we made them enroll for one year and then let them decide whether to stay. They both stayed." His children liked the international aspect of the school and the academic atmosphere, and they could participate in lots of things. Jake played football, did all the drama productions, and Hilary played volleyball, did drama, and played the flute.

Listening to Mr. Disch speak about his children's time at the school and about physics is to hear a man in his element. His knowledge and his passion for teaching and for physics continue to benefit students today, just as it has since the "good old days," when he was Julius Caesar's first tutor.

Diane Alpaugh H`83

Before arriving at Wayland Academy in 1974, Diane Alpaugh worked out East as a physical education teacher and coach at a public school. "At the time," she recalls, "there was no recognition for girls. Everything was boys' programs. I was visiting friends out here (in Wisconsin) and on a fluke came to Wayland for an interview. I loved the facilities. They had a full contingent of girls' sports. Compared to what I was used to, it

was heaven." She recalls thinking to herself, "This would be a cool thing to try for a few years." Those few years have turned out to be 36 years and counting.

The walls of Ms. Alpaugh's office in the Academic Building say a lot about her, as a teacher, a coach, and a human being. The walls are peppered with pictures of former students, miniature field hockey sticks, and team photos. Whereas teaching began as a sort of secondary duty with 7th grade history (at a time when Wayland offered 7th and 8th grades) Ms. Alpaugh is now the History Department Chair and is legendary (though she would refute that adjective) as an Advanced Placement U.S. history instructor.

She credits her development as a teacher and coach in large part to the good role models she had in her early years, such as Sol Wolfe `34, George Cobb H`80, Eli Seighman H`71, and Dave Kasper H`81. "Sol Wolfe was Mister Wayland," she says. "He was just a gruff, lovable guy. He loved Wayland - everything about it, and he was a great inspiration."

The same is often said of Ms. Alpaugh by other teachers at Wayland today. She is a strong believer in the "triple threat" teacher: the combination of coach, dorm supervisor, and teacher. "I think it's essential. It's a boarding school. It



Diane Alpaugh H`83

needs involvement. To be part of each others' lives, to see each other in different roles is part of it. It's what builds community." Alpaugh has played just about every role imaginable in her time at Wayland, and has coached basketball, softball, volleyball, and still coaches field hockey and skiing today. She was also advisor to the thespian society for almost twenty years, and has been helping out with set building for fall plays and spring musicals for even longer.

No one has ever said teaching at Wayland was easy, but as she notes, "For someone who enjoys being a part of it all, this place is perfect." It is apparent, then, that Diane Alpaugh enjoys being a part of it all.

Mike Schneider H`86

Mike Schneider is currently the Chair of the Modern and Classical Languages Department, but 31 years ago, he was just a guy looking for a job after finishing some interpreting work for Cuban refugees in Wisconsin. He got a call from a former professor who had received a letter looking for recommendations for a teaching position at Wayland. The professor asked him if he was interested, and then told him, "You get your best suit on and you drive up, and tell them I'm recommending you for the position."

Mr. Schneider did just that, and arrived at Wayland, unannounced, in the middle of parent-teacher conferences. He got in line, and then introduced himself to a surprised teacher as a job applicant, rather than as a conscientious father. A few days later, he received a phone call inviting him back for a "real" interview.

Mr. Schneider's life is intertwined with the life of Wayland Academy in ways that few people can claim. Not only is he in his 31st year of teaching Spanish at Wayland Academy, but he



Mike Schneider H`86

is the father and colleague of Beth Ratajczak `96 who teaches biology at Wayland.

He's used to seeing his daughter on the faculty now (this is Mrs. Ratajczak's fifth year teaching at Wayland), but "the first year it was weird. Especially when I would look over and see her disciplining students and doing it quite well. And I would look over and think, 'Wow, where did that come from?' She's done such a good job of balancing, a toddler, graduate school, dorm duty, teaching, that she's earned the respect of her colleagues. I'm very proud of that."

Thirty-one years is a long time in one profession at one school, but Mr. Schneider is still known as something of a whirlwind-grade energetic teacher amongst students today. He says it doesn't get old because each class is different every day. "I've adopted a new teaching method based on language acquisition theory that is dramatically and radically different from the traditional ways of teaching. I haven't used a textbook in ten years. It's more exhausting to deliver the method, but at the same time it keeps me fresh because it's different and new."

In addition to teaching, of course, he has also helped out with volleyball, golf, AAP, site managing, and for a few years, even the dance team. He has moderated the judicial committee,

and he has been a dorm supervisor in every dorm except Warren Cottage. He has done it all. And when asked what his wife, Lisa, thought of the profession that has absorbed so much time over the past three decades, he replied, "It's never been an issue. She's never complained. She's always been accepting of the fact that I work in a boarding school."

Jim Borrud H`75

The longest-serving member of Wayland's faculty is German teacher Jim Borrud, but you wouldn't know it to watch him teach. He has all the energy that a great teacher should. He has a purposeful stride, a sharp wit, and a proclaimed love for the German language.

It's that love that keeps him teaching. "It's never become boring or flat," he says, "or hard to get up and come to school." In addition to his subject matter, he says that Wayland's, "an enjoyable place to teach. I'm one of the only teachers here who's kids have to put up with for four straight years. I've had dozens of kids who've had to put up with me their whole career. I tip my hat to them." It's also worth noting that the vast majority of students who take four years of German with Mr. Borrud end up taking at least a year or two of German in college as well, and at least one student has even emigrated to Germany.

He is another teacher whose family life has joined with his professional and academic life at Wayland. Both of his sons graduated from the school, Kristian in 1999 and Gabriel in 2002. "They benefited from the international experience," he says. "They have a father who is half-European and their mother is from the Netherlands." Jim Borrud's wife, Gerda, is another reason for his being able to teach at Wayland as long he has. "Gerda put up with my necessary absence for coaching and dormitory duty for years. That drives a lot of



Jim Borrud H`75

teachers out of here." The Borruds have made it work for nearly four decades by looking forward to and valuing their time together. "It's not an exercise. You treasure the time together. Summers are so important; they're wonderful!"

He has also built a pattern into his academic years that incorporates the arrival of new German students every year, and a trip to Germany with students every Spring Break. He always has something to look forward to. Even after Spring Break in Germany, he transitions into his role as Wayland's golf coach. "One of the most cherished moments of my Wayland career," he says, "is in 1999 when Wayland won the state championship in golf, and my son Gabriel was on the team. That was my finest hour when we defeated all the private schools in the state of Wisconsin."

His plans for the future are still somewhat up in the air, but he says with certainty that, "as I approach the final leg of my career, I plan to enjoy 2010 as I did 1974."

Louise Hoff H`91 Retires After Nearly 30 Years at the Academy!

Louise Hoff H`91 arrived at Wayland in January of 1981. Previously, she had served as the registrar of Continuing Education at Scott Community College in Davenport, Iowa. She took the receptionist job at Wayland with every intention of leaving in a few months for something more challenging in Madison.



She finally managed to get around to leaving her job at Wayland, but it took 29 years longer than she had originally planned. On June 1, Louise retired from her position as Administrative Assistant to the Dean of Admission after nearly 30 years of service to Wayland Academy.

She will be greatly missed during the daily life of campus. For the last three decades, Louise was often the first person a prospective student coming to visit Wayland would meet. She has a gift for setting people at ease and making them feel welcome, but she never does so in a way that feels saccharine or disingenuous. In addition to all of the hard work she has given the school, Louise is renowned for her sense of humor and her generosity. The bowl of candy she kept on her desk was nearly a campus milestone by the time of her retirement.

Louise reports that life on the retired side is already going well, though she has no enormous plans to shake the pillars of the earth. She will be playing bridge again, reading, traveling, and shopping. Louise also says she looks forward to re-connecting with friends who retired before her.

“I will miss all the good friends I met at Wayland, although a few of us will still get together after work about once a month or so. I really enjoyed my time at Wayland and actually liked my job, but will not miss the crazy, busy times.”

Goodness knows, the crazy, busy times will miss her. The Wayland community congratulates Louise on her retirement and thanks her for all of her years of hard work!



The Legacy photo taken during Fall Family Weekend 2010. Seated (l-r): Virginia Teas Gill `79, Oliver Ptaschinski `11, Sam Coley `12, Aaron Hartl `14, Matt Bruning `11, and Mark Bruning `09; Standing: Will Gill `13, Sophie Ptaschinski `11, Marshall Hiestand `11, Mary-Lucile Smith `12, Cailin McCreedy `13, Anne Rauschert `11, Leslie Walton `11, Brooke Schumann `11, Allison Bruning `14, and Kevin Bruning `79

DONOR RECOGNITION

On behalf of the students, faculty, staff, and the Board of Trustees, I would like to thank you for your continued generous support of Wayland Academy. The Academy's success in delivering knowledge to and developing character in its students largely depends upon the ongoing philanthropic support of alumni, parents, grandparents, faculty, and friends. It is with great gratitude that I present to you the lists of Heritage Society, Endowment, Scholarship, *The Academy Fund* (annual unrestricted giving program), and Wayland Hall renovation contributors for the 2009-2010 fiscal year, which cover the time frame from July 1, 2009, to June 30, 2010.


In addition to the list of donor names, we hope you review the gift information charts and enjoy reading the donor profile stories. The donor profile stories provide the opportunity for supporters to share why they support the Academy and we hope that it inspires and encourages others to do the same.

Again, thank you for your most generous support of Wayland!

Sincerely,



Trent Jackson
Vice President of Development



Vice President of Development Trent Jackson enjoyed a little celebrity interaction with the cast of "Cold Case" while visiting with Wayland alum and Award Winning Make-up Artist Felicia Linsky '79. "Cold Case" cast members (l-r) Jeremy Ratchford (Nick), John Finn (John), Thom Barry (Will), Tracie Thoms (Kat), Jackson, Linsky, Kathryn Morris (Lily), and Danny Pino (Scotty).

Heritage Society Donors

Alumni and friends of Wayland Academy become members of the Heritage Society by including Wayland in their estate plans or by making the Academy a beneficiary in their charitable trusts, annuities, wills, and life insurance policies.

Wayland is grateful to the following alums and friends who have decided to provide future sustaining support to the Academy through the Heritage Society.

Margaret Boldt Anderson `74
Patricia P. Barkhuff H`56
Susan & Fred J. Bartizal, Jr.
Frederick E. Bishop `57
Harry L. Cody `58
Linda & Larry Cole
Anne Blanchard Gascoigne `53
Franklin D. Hochholzer `55
Trent Jackson
Susan & James Janik `74
R. Scott Jones `63
John C. Jung
Richard H. Kimberly `54
Peter E. Lee `59
David A. Mead `65
Edward J. Miller `59
Kathryn Huth Newton `43
Camilla Nielsen
Ruth H`10 & Raymond `40
Patterson, Jr.
Susan Peterson `63
Mitzi H`43 & James Pickard `43
Samuel W. Pickard `51
Robert H. Prosser `60
Karl A. Rauschert `47
Martha A. Scott `75
H. John Sirovy, Jr. `69
Burnett G. Sullivan `69
Marjorie Espersen Thornton `48
Gretchen F. Trumpf `74
Marilyn & Roger VanHaren H`84
Judith Pickard Yeakel `47

The Endowment: Named Scholarships and Program Designated

Endowment funds are a set of restricted gifts that are annually invested and generate annual income to support student scholarships, faculty compensation, academic programs, facility improvements, and other operating expenses. In addition, Wayland's endowment provides the Academy's Administration with a financial base for the year knowing that it can rely on a certain amount of endowment income annually.

Wayland is grateful to the following alums and friends who have established endowment support at the Academy.

Class of 1947 Scholarship
Class of 1956 Memorial Fund
Class of 1957 Scholarship
Class of 1969 – David S. Terrill `69
(Student Activities)
Class of 1989 Fund
Janet Newton Allen Scholarship
Richard Aylward Memorial Scholarship
Hugh A. Bird Memorial Scholarship
Frederick Eric Bishop and Juvannah J. Bishop Memorial Scholarship
Boldt Special Events Series
(Fine Arts)
Greg Boulanger Memorial Scholarship
Addison and Doris Brown Scholarship
Edwin Putnam Brown Memorial Scholarship
Outagamie Charitable Foundation:
Salute Sesquicentennial Fund
Campbell Annuity Fund
Cynthia Snyder Catlin Memorial Scholarship
Stephanie Dorward Smith Scholarship

Dye Family Foundation
Ella and Glen Dye Endowed
(Religion & Science)
Mr. Lewis R. Elin `56
Ellis Family Scholarship
William Emanuel American Legion
Scholarship
Esten Family Scholarship
Ferris Memorial Scholarship
David W. Fierke Memorial
Scholarship
Fischer Imaging Corporation
Scholarship
Fordis Scholarship Fund
Edward E. Ford Foundation
(Faculty Professional Development)
Edith Frizelle Memorial Scholarship
James P. Freeman (President's Award)
Gray Family Scholarship
Catherine Hatcher Memorial
Catherine Hatcher Memorial
(English Literature-Kaleidoscope)
Adelia Bearder Hathaway Memorial
Scholarship
Clarence R. Hathaway Scholarship
Mikki Hebl `87 and David Harvey,
Jr. Scholarship
Magnus Hendrickson Scholarship
Dr. Weimer K. and Jean J. Hicks
Scholarship
Frank X. Hochholzer Family
Scholarship
Holder Management Corporation
Scholarship
Horak-Wayland Residential



Lisa Rayford `11, Enrique Galvan `11, and Oliver Ptaschinski `11 walking up the steps of Janik Terrace

2009-2010 Overall Philanthropic Support

Amount Raised

\$1,554,588

Goal

\$1,500,000

<p>Scholars Award Horicon Bank Scholarship Fund Ralph G. Johnson Scholarship Fund James Johnston Memorial Scholarship Kastenmeier Scholarship Fund Era and Marvin Keil Scholarship Knopf Family Foundation John P. Lagomarcino Memorial Scholarship Frederic Sumner LaRue Memorial Scholarship Peter E. Lee Scholarship S. Walter "Abe" Lincoln Memorial Award in United States History Scholarship Fund Linfield Hall Alumni Scholarship Suzanna Steptoe Linnell Scholarship George J. Maye Scholarship Mayer Scholarship Fund Laura MacDonald Memorial Scholarship McGregor Scholarship Mark A. McMillan Memorial Martin J. Meyer, Jr. Memorial Scholarship Marion E. Mitchell Scholarship Earl C. Moeller Scholarship Romona R. and Vincent F. Nast Sr. Memorial Scholarship Ann Nelson '89 Memorial Scholarship Ann Nicole Nelson '89 Scholarship Fund Roy B. Nelson Scholarship Ben F. Newell Chair (Computer Science) Harry M. Newton Scholarship Dorthea W. and Samuel N. Pickard Family Scholarship Wayland ARISE Scholarship Fund David G. Proctor H'07 Chair of English Clarence Radel Scholarship Carla Smith Radford Memorial Scholarship Rauschert Family Scholarship Reader's Digest Endowed Fund Scholarship Arthur Sadoff Family</p>	<p>Scholarship Fund Thomas H. Sanderson Scholarship Marian Baldwin Schlicher Memorial Scholarship Peter J. Seippel Scholarship Seippel Economics Chair Seippel Fine Arts Chair Seippel Scholarship Fund Susan Seippel Grow Memorial Scholarship Joseph and Mary Ellen Sensenbrenner Scholarship Fund Mr. and Mrs. John M. Sirianni Stephanie Dorward Smith Scholarship Cleveland & Anna Stanley Joseph T. Steuer, Jr. Family Scholarship Swan Library Fund Mary M. Swan '25 Scholarship C.J. Tempas Scholarship Fund Shirley Hughes Tempas Scholarship Amy B. Thompson Scholarship Jay Hobert Tucker Scholarship Dr. Proctor and Alma Lundberg Waldo Scholarship David S. Terrell '69 (Athletic Support) Valley First National Scholarship Wayland Scholars Program Westra Construction Inc. Scholarship Wheeler Scholarship Alton E. Wichman Memorial Scholarship Myrtie Hyland Winnett Scholarship Wirtz Family Fund Wirtz Family Athletic Fund (Hockey or Athletic General) Wisconsin Power and Light Scholarship Wisconsin Power and Light Foundation (Fine Arts) Wright-Beebe Scholarship</p>
--	--

The Newell Society

Newell Level

\$10,000

The 1855 Society

President's Level

\$5,000-9,999

Francis Wayland Level

\$2,500-4,999

1855 Level

\$1,000-2,499

The Cordial Society

Cordial Level

\$500-999

Faculty Level

\$400-499

Senior Level

\$300-399

The Greetings Society

Junior Level

\$100-299

Sophomore Level

\$50-99

Freshman Level

\$1-49

Overall Contribution Breakdown 2009-2010

The Academy Fund	\$588,951
Wayland Hall Renovation	\$367,743
Endowment	\$189,982
Sesquicentennial Campaign	\$169,464
Kimberly Chapel Organ	\$73,000
Spring Gala & Auction	\$72,378
General and Operations and Facilities Improvements	\$50,270
Franklin Street Faculty Housing	\$20,000
Great Teachers Great Teaching Fund	\$11,800
Kimberly Chapel	<u>\$11,000</u>
TOTAL	\$1,554,588

Overall Contributions

The following sections acknowledge, with great gratitude, all contributions to Wayland Academy, both restricted and unrestricted, by listing the donors' names in the Academy's philanthropic contribution levels.

Benjamin Newell Society

The Newell Society, founded in 1997, is named in honor of Pastor and Mrs. Benjamin Newell, the first principal and preceptress of Wayland Academy.

Newell Level

The Newell Level recognizes donors who give \$10,000 or more during the fiscal year.

D. Claire Anderson
 Andrew Aylward `73
 William Aylward, Jr. `70
 Louise Aylward
 Stephanie & Frederick Bishop `57
 Daniel Brickman `76
 Wendy & Philip Buchanan `85
 Madalyn Conklin
 Gerald Dye
 Linda & Robert Esten `64
 Michelle Hebl `87
 Sylvia & John Hughes `64

Susan & James Janik `74
 Anne & Scott Jones `63
 Karen H`08 & Richard Kimberly `54
 Amy Knopf
 Walter Koskinen `73
 Onnie Leach Smith
 Dorothy Lee Estate
 Melissa & Scott Lowell
 William Luedke IV `70
 Terri & Edward Martin `74
 John B. McKinstry H `10
 Jenette & Gary Nelson
 Elizabeth Parker `72
 Susan Peterson `63 &
 Archie Alexander
 Samuel Pickard `51
 Kathy & Curtis Radford `73
 Eileen & Karl Rauschert `47
 Cynthia & Mark Rauschert `83
 F. Joseph Sensenbrenner



Hugh Dinsmore `73 arranged dinner and entertainment in the Los Angeles Beverly Hills area. Pictured above are Trent Jackson, Chef Wolfgang Puck, and Hugh.

Julia Shaw `47 & Dr. John Shaw
 Mowry Smith
 Jamie & Joseph Steuer
 Judith Pickard Yeakel `47
 Aylward Family Foundation Inc.
 Community Foundation for the Fox Valley Region, Inc.
 Dye Family Foundation
 George S. Parker II Living Trust
 Knopf Family Foundation
 Theda Clark Smith Family Foundation
 Walter Alexander Foundation Inc.



Johann Herkenhoener `11

The 1855 Society

The 1855 Society was created in 2002 by the Board of Trustees to encourage annual support of \$1,885, leading up to the Academy's Sesquicentennial (150 years) Celebration. After 2005, the 1855 Society gift amounts were changed to \$1,000.

The 1855 Society recognizes supporters that contribute from \$1,000 to \$9,999. The 1855 Society has three giving levels: the President, the Francis Wayland, and the 1855 level.

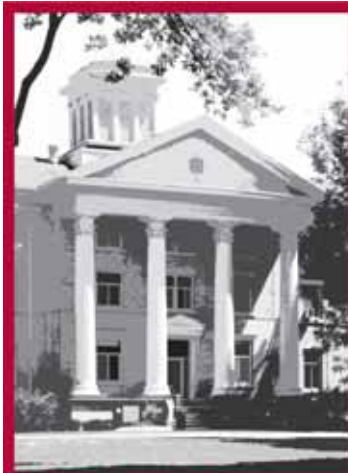
President's Level

The President's Level recognizes donors who contribute from \$5,000 to \$9,999 annually during the fiscal year.

Harry Cody `58
Connie & Raymon Darling
Jeff Hamar `76
Joseph Horak
Susan & Robert Kuehling
Yung Im Hwang & Jun Yeol Lee
Sandra Smith Leland `52
William Moore `59
Mitzi H `43 & James Pickard `43
E.J. Plesko
Robin Garard & Scott Posnanski `86



Michael Estrella `11 and
John Pryme `11



The Academy Fund

The Academy Fund is Wayland's annual unrestricted giving program and is essential to bridge the financial difference between the operating costs of the Academy and the revenue generated from tuition and endowment income.

The Academy Fund contributions are allocated to fund student scholarships, social events, athletic opportunities, character development activities, and overall improvements of the Wayland Community.

The Academy Fund Fiscal Year 2009-2010

Raised
\$588,951

Goal
\$550,000



Jane Goski `10

Marie & Greg Pusinelli
Elisabeth Law Roberts `49 &
Theodore Roberts
Rosina Samadani `85
Carol Swanson Wilson `47 &
Tom Wilson
Nancy B. Parker Charitable
Lead Trust #2

Francis Wayland Level

The Francis Wayland Level recognizes donors who contribute from \$2,500 to \$4,999 during the fiscal year.

Frank Babka `79
Jean & Dennis Bauman
Jerome Bomier II `73
B. Beck Fisher, Jr. `51
Ingrid & Lars Graff
Barbara Burstein Katz `51
Jeffrey Kuehling `03
Megan Kuehling `00
Margaret Wharton Minnich `72
Matthew Nielsen `90
Thomas Platt `71
Gail Walter & Allen Proctor `70
Judith Ronin Scherb `63 &
Bert Scherb
Diane & Charles Siekman `68
Catherine & Ronald Silver
Georgianna Starz
Jeremy Starz `97
Robert Stilin `83
Jane & Burnett Sullivan `69
Douglas Toft `89

2009-2010 Constituency Giving Breakdown

	<u>Contribution</u>	<u>Percent Giving</u>
Trustees	\$292,400	100%
Trustee Emeriti	\$259,275	100%
President's Council	\$5,300	100%
Faculty & Staff	\$5,380	95%
Alumni	\$623,793	21%
Parents/Grandparents	\$156,172	31%
Friends/Foundations	\$139,890	
Spring Gala & Auction	<u>\$72,378</u>	
Total	\$1,554,588	

Kraft Employee Involvement Programs

Northwestern Mutual Foundation
Seippel Family Foundation Inc.
Toft Family Fund

1855 Level

The 1855 Level of giving recognizes donors who contribute from \$1,000 to \$2,499 during the fiscal year.

Clay Barnes `84
Peter Bissegger `72
Pamela Brown
Robert Bull
Sharon & George Cobb H`80
Janice & Andrew Coulson `64
William Craig `57
Mary Bussey & William Craig
Jacquelyne Nixon DenUyl `70

James Downing `94
Steven Ecker `79
David Erbstoeszler `61
Jeanne & John Faber
John Fisher `65
Paul Frank
Kathy & Kurt French
Anders Graff `93
Debra & Carl Guse
Judith & Gregg Heidebrink `82
Katharine Purdy Herbert `68
Barbara Hill `73
Judy H`08 & Craig Hill H`06
Franklin Hochholzer `55
Trent Jackson
Jane & Loren Jahn
Eunjin Hwang & Changhoon Jang
Helene Jensen
Marion`46 & F. Addison Jones `46
Dorothy Jung `75

John Jung
Cheryl & Peter Jung `77
Dorothy & Robert Kastenmeier
Kris Kavelaris
Julia Martin Keely `79
Pamela Keller
Sam Jung Kim `94
Annrita & Henry Lardy
Jeffrey Lasher `64
Peter Lee `59
Joseph Lennertz H`86
Lester Martin `37
Miles McMillin `78
Kimberly & Rodney Miller
Janet & Harvey Mosley
Kathryn Huth Newton `43
Richard Perkins
Jane Petit Moore `59
Javier Pizarro `90
Guy Pontius `47



The Cousins and Siblings photograph taken over the 2010 Fall Family Weekend.

The Academy Fund Contributions from 2000 to 2010

<u>Fiscal Years</u>	<u>Donors</u>	<u>Contributions</u>
2009-2010	621	\$588,951
2008-2009	714	\$574,035
2007-2008	764	\$625,717
2006-2007	652	\$508,728
2005-2006	765	\$753,741
2004-2005	1,133	\$559,621
2003-2004	1,082	\$643,515
2002-2003	1,043	\$639,694
2001-2002	938	\$547,947
2000-2001	714	\$456,470

George Pratt `53
 Robert Prosser `60
 Joseph Sackett Jr. `83
 Farhut & Ayaz Samadani
 Rose Schaalma H `10
 Fred Schlicher `48
 Judith Jensen Schwartzbaum `61
 Ruth & Frederick Schwertfeger
 Hilary & Sean Scott
 Mary & John Sensenbrenner, Jr.
 Jane `71 & Donald Shepard `71
 Blair Smith `83
 Susan Wiechers Sommerfield `62
 Janet Sharp Turner `56 &
 Donald Turner
 Dona & Larry Turner
 John Tye, Jr. `63
 Jennifer & Andrew Urquhart

Elizabeth Burnham Wallman `71
 Hao Wang `08
 Christopher Wiedenhoef `78
 Lorna & James Will
 Sunny Soldwedel Wirtz `57
 Carmen & Francis Wolf
 Chen Xin
 Michael Yanikowski `73
 Abbott Laboratories Fund
 Anonymous
 California Wellness Foundation
 Champion Roofing Services, Inc
 Dr. & Mrs. John Faber
 Family Foundation
 GE Foundation
 Jung Seed Genetics Inc.
 Neuman Pools Inc.
 Perkins Foundation



Science teacher Mikhail Tatin's class

QuadGraphics
 Sodexo Kitchen
 Wharton Foundation Inc.

Cordial Society

The Cordial Society is named for its long standing meaning at the Academy. When a student is "cordially" invited to an event or activity, the student's presence is mandatory.

The Cordial Society recognizes supporters who contribute from \$500 to \$999 during the fiscal year. The Cordial Society has three giving levels: the Cordial, the Faculty, and the Senior Level.

Cordial Level

The Cordial Level recognizes donors who contribute from \$500 to \$999 during the fiscal year.

Martha Alexander `74
 Deborah & Allen Alley
 Kathleen & Steven Ashby
 Donna Bailey
 Virginia Banta
 Ardeth Bayley
 James Bayley `62
 Clifford Bischoff `63
 James Bliss `54
 Anne Lutringer Borgschatz `94
 Sabina Bosshard `67
 Nancy & Kris Boucher H `90
 Richard Boya H `67
 Victoria & Jay Brenner `75
 Ellen & Kevin Bruning `79
 James Cape `69
 Judith & August Crivolio
 Elizabeth Esten Cross `56
 Joshua Dalley `95
 Cleone & Louis Davidson
 Mark Duffy `79
 Paul Ecker `85
 Heidi Eisenreich `97
 Lewis Elin `56
 Bradford Ellis `86
 Connie & Ric Fiegel
 Fred Flom `59
 John Florine `67
 Suzanne Brannon Groff `49
 Nancy Rowe Haimbaugh `59
 Steven Hoef `66
 Katharine Mayer Johnston `47

Matt Nielsen `90

Twenty years ago, Matt Nielsen was a teenager living in Glen Dye dormitory. Now, he is the Chief Operating Officer of Nielsen-Massey Vanillas. The paths that lead us from one place to another in life are often difficult to formulate into a linear narrative, but Matt gives a lot of credit to Wayland for helping him become the man he is today. "Not everyone would necessarily agree with this, but I matured tremendously over the three years I was at Wayland," he said. "I came in as a complete slacker, but I took the opportunities Wayland gave me, and I graduated a more well-rounded person than when I came in."

He was the third child in his family to attend Wayland, as his brother Craig graduated in 1982 and his sister Beth did so in 1988, and the main thing he recalls about his time at Wayland Academy is the friends that he made and still keeps in touch with today. "The friendships were with people not only from the Midwest, but throughout the country and internationally. There were people from the Middle East and exchange students from Korea. It was a unique experience to go to school and live in such close quarters with such a diverse community."

Nielsen also recalls how important the faculty and staff were to his formation at the time. "I can't say I was a perfect angel," he recalls. "The academy was good for providing structure for my life and seeing potential in me that I didn't know I had, and that came from the teachers as well as the staff." In particular, he singles out his mentor, current Interim President Joe Lennertz H`86, as a source of tremendous support in good times and bad. He also recalls that George Cobb H`80 and Eli Seighman H`71, who was the head resident of Glen Dye at the time, supplied essential support during his time at Wayland, as did then president, the late Dr. William Ellis H`67. "They all in one way or another challenged me," he recalls.

It's because he had such a good experience at Wayland that Matt Nielsen describes his donations to the school not just as charity, or something that makes him feel good. He refers to it as a responsibility. "I feel I had a duty to give back to Wayland," he says, "so that other students can have that opportunity that I had. And if I have children, I want to send them there. I have to help and make sure that that opportunity is viable. It was too important a part of my life to ignore."



Matt Nielsen `90

Marilea & Richard Keating
William Keating `00
David Larson `71
Elizabeth Boucher Lee `99
Jason Liao `94
Ruth & Robert Martin
Susie Cubberly McDonald `59
Stephen Miller `59
Thomas Moore `62
Peter Morton `53
Eric Nagle `82
Alan Neil
Rosemary & Phillip Resch
Elizabeth & Erik Ritman
F. Robert Russo, Jr. `71
Ann Sensenbrenner Salutz `78
Nadia Samadani Kathwari `97
Sara Sanderson `74 &
Eric Weaver
John Santucci
Linda Adams & Charles Schleevogt
Charles E. Shaw `94

Janet Brown Smith `57
George Socha, Jr. `75
Jean Duchow Solomon `62
Mary Strange `58
Nancy Swanson
Braden Tempas `89
Philip Templeton `64
Leann & Paul Tramm
Michael VanHaren `82
Ruth Ann & Thomas Watkins `54
Kathleen & Steven Weinstein
Peter Williams `89
Christopher Wilson `67
Wendy Wilson `71
Jennifer `86 & Arthur Wirtz `86
Richard Wittnebel `53
Mary Margaret Wohlwend
Jung Sook Kim & Jin Mo Yang
Yeping Sun & Lei Yao
Jianhong Che & Xiaogang Zhang
BayCare Clinic Foundation
Horicon Bank

Keating Foundation, Inc.
Menasha Corporation Foundation
The Retirement Research Foundation

Faculty Level

The Faculty Level recognizes donors who contribute from \$400 to \$499 during the fiscal year.

Daniel Barber `56
Julia & Thomas Behrenbeck
Steven Detweiler `65
George Dowell
Anne Provost Drummond `75
Marilynn Hamar
Elaine Hill
Linda & Thomas Lutes
Marc Stecker `78
Nichol & Craig Swenson
Julie & Dean Wahl
David Walton

Senior Level

The Senior Level recognizes donors who contribute from \$300 to \$399 during the fiscal year.

Estella Stone Berven `56
 Ellen Barber Boeye `52
 Catherine Best & Russell Brandl
 Margaret Nast Caldwell `43
 India Radford Clarke `77
 Jordan Cole `02
 Paul Cromheecke `60
 Don Davis `50
 Oliver Davis `59
 Margo Fultz
 Elizabeth Bloom Gill `74
 Bridget Gokey Gray `69
 Winifred Woods Gulyas `49
 Mi Hae Kim & Do Ssu Hwang
 Nancy & James Hynes
 Peter Keady `52
 Nathalie & Paul Keller
 Christopher Klee `86
 Nancy Hagan Klein `68
 Elizabeth Sidow Kurth `67
 Nancy Liljedahl `81
 Christine Baumann Lillesand `77
 Tara Gaulke McLaughlin `83
 Shirley Tye Shearman
 Matthew Songer `76
 Jeffery Tempas `63
 Lois & Werner Tramm
 Theanne Kirkby Weil `56
 Gloria H `65 & Robert Wheeler
 Florence & James Yanikowski

The Greetings Society

The Greetings Society, named for the Academy's alumni news magazine, which is the nation's oldest alumni publication, recognizes supporters that contribute for \$1 to \$299.

The Greetings Society has four giving levels: the Junior Level, the Sophomore Level, the Freshman Level, and the Greetings Level

Junior Level

The Junior Level recognizes donors who contribute from \$100 to \$299 during the fiscal year.

Vernice Johnson Allen `53
 Diane Alpaugh H `83
 Charles Ashbrook `47
 Kristina & Roger Bacci
 Abisola & Olushola Bakare
 Robert Banky, Sr. `54
 Patricia Barkhuff H `56
 Sara Traut Bass `75
 Donald Bates
 Marian Mitchell Bates `46
 Steven Baumgartner `91
 Carol H `99 & Eric Becker
 Liberty Bell & Mark Born
 Corene & Philip Bernatz
 Gloria Berry
 Bruce Black `62
 Marlease & Francis Bogner
 Kristene Boucher `97 & James Lind
 Angie & Roy Brandell

President's Cup

The Raymond Patterson Jr. `40 President's Cup is awarded to the class with the highest donor participation rate for the fiscal year.

The class of 1963 assumed the 2009-2010 top spot, previously held by the class of 1973.

Congratulations to the Class of 1963!

Class of	Percentage	Class of	Percentage
`63	23.33%	`88	6.78%
`56	20.20%	`41	6.67%
`73	17.58%	`46	6.67%
`57	17.14%	`94	6.60%
`59	14.29%	`86	6.42%
`53	14.10%	`04	6.35%
`50	13.08%	`90	6.25%
`77	12.09%	`89	5.61%
`52	12.00%	`02	5.56%
`75	11.90%	`81	5.38%
`60	11.88%	`99	5.36%
`79	11.00%	`55	5.26%
`74	10.47%	`80	5.15%
`43	10.42%	`08	4.94%
`76	10.13%	`91	4.90%
`67	10.00%	`42	4.65%
`47	9.78%	`78	4.30%
`51	9.78%	`66	4.26%
`64	9.57%	`34	4.00%
`97	9.38%	`03	3.80%
`49	9.09%	`37	3.70%
`71	9.09%	`01	3.39%
`58	8.99%	`48	3.31%
`62	8.70%	`44	3.23%
`82	8.66%	`87	2.99%
`54	8.64%	`32	2.56%
`70	8.51%	`09	2.44%
`00	8.45%	`40	2.22%
`61	8.33%	`96	2.06%
`85	8.27%	`06	2.00%
`65	8.11%	`39	1.96%
`83	7.89%	`93	1.90%
`68	7.87%	`05	1.56%
`69	7.55%	`84	1.53%
`95	7.14%	`92	0.95%
`72	6.80%		



The Wayland Academy Pep Band. Front row: Sarah Willihnganz `13, Dezarae Avalos `10, Jane Goski `10, Estelle de Vendegies `10, Emma Peterson `12, and Hwa Yeon Lee `11; Back row: Kirstin Lardy `12, Selena Erdman `12, Charlotte Lange `11, Pep Band Director Amy Throndsen, Robbie Behrenbeck `10, Alex Derr `12, and Mike Boucher `10

Why We Give: Mackenzie `11, Kimberly and Rodney Miller

In the past three years, the Miller family has found their lives intertwined with the life of Beaver Dam and Wayland Academy in innumerable ways. Today, Kimberly is the President/CEO of Beaver Dam Community Hospital. Rodney is the Chief Financial Officer for Wayland Academy. Their daughter Mackenzie will graduate in May as a four-year Wayland student. All in all, the family plays a central role in the life of Wayland Academy and the city of Beaver Dam.

In addition to all they contribute in their time and effort, all three Millers also give financially to Wayland.

According to Kim and Rodney, “we have always given back to our community. We give to the causes which we believe in and those which touch our hearts. We both feel we have an obligation to leave this world a better place. In today’s society with all the world’s problems and issues this is quite difficult, but by choosing to donate our time and our money to causes that touch our heart and that we believe in we feel we can help make the world a better place even if it is in some small way.”

Rodney and Kim say that Wayland’s role in making the world a better place is that “Wayland brings to this small rural community of Beaver Dam in southeast Wisconsin a broader world perspective in the form of the cultural diversity of people, music, arts, studies and social interactions.” They also appreciate what Wayland provides Mackenzie and her classmates: a nurturing and supportive environment for students to come together to share their very different worlds, backgrounds and experiences. They have watched Mackenzie grow emotionally and intellectually over the past three years, and they are confident, as parents, that she will graduate from high school well-prepared for college and life after formal education.

Mackenzie, in turn, has shown her appreciation for her time at Wayland by becoming a donor herself. Her reasoning was this: “I feel it is my responsibility to give back to the community, and I also have been blessed to be given the opportunity to attend Wayland Academy. I choose to donate because I want to insure that others are given the same opportunity to receive a great education.”



Kim and Rodney Miller



Mackenzie Miller `11

Nicole Brandrup `94
Erik Brandt `91
Peter Bredlau `85
Brad Brickman `74
Mary Brazeau Brown `70
Sudro Brown `56
Linda Manaugh Buan `85
Scott Buchanan `82
Scott Buchta `82
Barbara Tews Budd `53
Robert Buddig `75

Donald Bunge `50
Christine Trost `82 &
Douglas Burnham `82
Margaret Barrett Busch `59
Barbara Weisse Capitaine `63
Tami Posnanski Carpenter `88
Reynolds Challoner `60
B. J. & Norman Chimenti
Juanita Clark
Barrie Clay `77
John Cohnstaedt `65

Leonard Coulson III `61
Meredith Coulson `95
Stuart Cushman `83
Linda Darling
Eric Davis `01
Elaine & Erroll Davis, Jr.
Patricia & Robert Davis
William Davis II `63
William Davis `65
Mary & Donald Derr
Martha Stevens Dresser `68

Wayland Academy Overall Contribution Giving Level Analysis (2009-2010)

<u>Number of Donors</u>	<u>Donor Category</u>	<u>Giving Level</u>	<u>Amount Contributed</u>
43	Benjamin Newell	\$10,000 plus	\$1,127,260
19	President Level	\$5,000 to \$9,999	\$101,690
23	Francis Wayland Level	\$2,500 to \$4,99	\$55,220
92	1855 Level	\$1,000 to \$2,499	\$95,258
80	Cordial Level	\$500 to \$999	44,561
13	Faculty Level	\$400 to \$499	\$4,850
31	Senior Level	\$300 to \$399	\$9,020
281	Junior Level	\$100 to \$299	\$36,896
105	Sophomore Level	\$50 to \$99	\$5,360
60	Freshman Level	\$25 to \$49	\$1,625
<u>86</u>	Greetings Level	\$1 to \$24	<u>\$470</u>
Totals 833			\$1,482,210*

*The total amount excludes the \$72,378 raised during the April 2010 Spring Gala & Auction.

William Dunnuck `60
 Jacqueline Kerr Dye `49
 Michael Ecker `77
 Marylyn Meythaler Edmonds `63
 Linda & Wayne Edson
 Georgia & Richard Eisenreich
 Thomas Ellis `65
 Maria Falauto
 Millicent Ferris `57
 Carol & Thomas Fisher `50
 David Fitchett `57
 Robert Folsom `63
 Thompson Foster `48
 Leslie Snell Franken `88
 Jeanne Enhelder Frink `67
 Susan & Douglas Ganske
 Anne Blanchard Gascoigne `53
 Thomas Gates
 Gene's Beaver Floral
 Nancy & William Gibbons
 Carlos Glender
 Louis Goldring, Jr. `86
 Robert Gollwitzer `42
 Dorothee & Karl Gossel
 Nada Proctor Graves `51
 Shelley Greenwood `73
 Elizabeth Rumpel Gukich `58
 Joy Brown Guyer `56
 Margaret & Douglas Haag
 Agnes Hadhazy `91
 Marjorie Stephenson Hallden `51

Edward Hamb `88
 David Hayes `12
 Kristen Hayes
 Walter Henes II `52
 Jennifer & Alan Herzberg
 Candis Bailey Hickey `72
 Judith Nagley Hidde `56
 David Hommel `94

Jonathan Homuth `61
 Carol Wolf Huber `50 &
 Carl Huber `49
 Christopher Hutchins `89
 Anna January `08
 Marilyn & Craig January
 Suzanne Filut & Peter Jensen
 Craig Johnson II `65



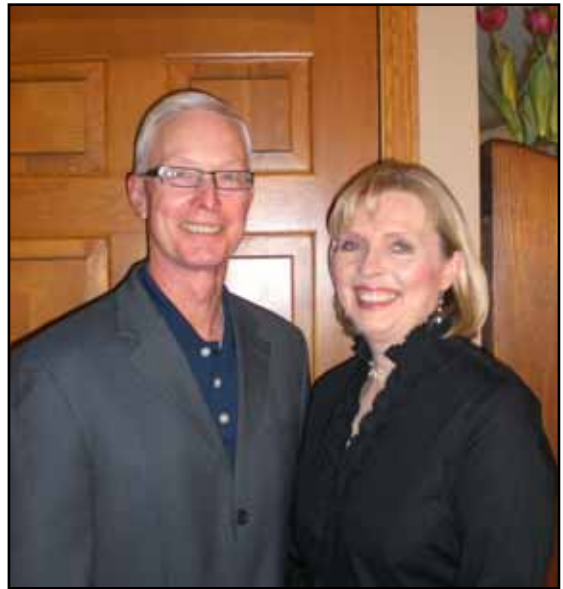
*Alexandra Steinkraus `12, Meghan Turner `12, Elizabeth Warfield `12 ,
 Laura Siekman `12, Kourtney Ruegger `12*

Janet and Harvey Mosley Parents of David Mosley `11

Janet and Harvey Mosley are finding the house a bit emptier than usual, lately. The Sun Prairie couple enrolled their youngest child, David, in Wayland as a day student three and a half years ago. It's the furthest a student has been allowed to commute to Wayland as a day student in recent memory (around half an hour each way), but it was an opportunity that the family decided was worth the extra time and effort. David is now a senior prefect, and as a result he isn't making the drive home nearly as often. He helps out in Wayland Hall on a regular basis and has enjoyed the boarding lifestyle so much that according to the Mosley's he doesn't make it home nearly as often as they'd expected. But, though they miss having him around, they could not be more proud of their son.

They made their decision to send David to Wayland after his 8th grade year because they knew the school offered more academically than their small, rural public school, and they had a friend whose child had gone to Wayland and liked it. The academics have been everything they've hoped for, but the Mosley's seem at least as impressed by the self-confidence David has developed over his high school career. "I think because of the small classes and the teachers he has good rapport with adults now," said Janet Mosley. "He can speak to any adult and doesn't feel intimidated. And he's grown academically tremendously over the last four years. He loves to learn, and it's because of the faculty at Wayland."

Amongst the many attributes of Wayland the Mosley's credit with David's growth is their belief that you don't have to be a certain kind of kid fitting a certain mold to succeed. There are opportunities to carve out your own niche. In David's case, he enjoyed his economics class taught by Paul Keller, Dean of Students, so much that a few of the students in the class, including David, have worked with Keller to form an Econ Club. They have a sort of "mock investment" program underway. According to Harvey Mosley, "You just can't achieve some of those things unless you're at a place like Wayland. They foster what they promote, it happens day to day."



Harvey and Janet Mosley



David Mosley `11

The Mosley's pay tuition to send David to Wayland, and for a few years they drove an hour a day to get him to Beaver Dam and back. Now he drives himself, but they help out with the car and the gas. In addition to all of this, they still contribute financially to the school. "We feel indebted to the staff at Wayland, for how much time and energy is put into students," said Janet. "We feel gratitude to the school and staff."

Harvey Mosley agrees, but adds that their gratitude for the school creates a larger sense of responsibility. "We strongly believe that the educational opportunities David is getting are just tremendous and not something we take lightly. And if you're going to keep something like that going, not every one can do it financially. It's our way of helping it continue and grow and keep offering opportunities for kids. If people aren't contributing financially, at some time you might have to cut back on what the school can offer. The more you can financially contribute, every generation can benefit from that."

He also recognizes that the expenses of raising children and sending them to school can make contributions an impossibility for many parents. It makes sense that many have to wait until their sons and daughters have graduated, and perhaps even until they have completed college before they can give. With David, their youngest child, graduating from Wayland this year, though, it's the right time for the Mosley's. "As we get older and have less responsibility to our kids," said Harvey, "those are the type of people who can afford to contribute more. David being our last kid in high school... as we continue on, we intend to support the school. When you believe in something in your heart, you have to give."



Vice President of Development Trent Jackson, John Miller `05, Associate Dean of Admissions Kris Boucher H`90, and Alex Hodgdon `05 at the Wayland Green Bay Gathering held at Curly's Pub at Lambeau Field

Laurel Johnson
 Nancy & David Kasper H`81
 Cynthia Chapman Kaufmann `77
 John Kearns, Jr. `57
 John Keil `50
 Todd Keil `80
 Harold Kempfer `50
 William Kerr, Jr.

Ji Do Oum & Hye Won Kim
 Arthur Klawans `50
 Paul Kleist `73
 Donald Koskinen
 Dennis Krings-Ernst `00
 Kyoko & Hideaki Kusayama
 Kristin Kelly Laas `50
 Melissa & John Landdeck
 Cynthia & Michael Lardy
 Richard Lash H`08
 Medeline & Raymond Laufenberg
 Sarah Lavicka `71
 Sarah Engle Lawrence `53
 Christopher Leslie `58
 Katherine Libby `80
 Vicki Mason Lonngren `56
 John Lungerhausen `74
 Jan Pendexter Macdonald II `60
 Shashikala &
 Vennaralagappan Mahadev
 James Malone `41
 Andrew Martin `81
 Theodore Martin `62
 Eldon Mayer `53
 Adrian Mazar `76
 Sean McCann `85
 Kathryn Decker McKay `63
 Ann Merizon `82
 Frederick Merizon `80
 David Messer `58
 Mary Schnur Metcalf `61

Virginia Banta Michel `71
 Christopher Mientus
 Gail & Edward Miller `59
 Gloria & Scott Miller
 Janet Maier Millermaier `72
 Priscilla & Steven Minkel
 Gretchen Wright Moore `60
 Jay Morley `69
 Helen Neis
 George Neuberger, Jr. `71
 Carol & Richard Okray
 Alison Burrowes Olsen `77
 Mary & Kenneth Ostermann
 Lynn Roseman Owen `49
 Patty Foresman Foundation
 Dianne & James Paulsen
 Elizabeth Pechous `90
 Ann Baird Pepper `63
 Helen Perry
 Lynn Gable Peters `95
 Jose Pizarro `88
 James Plews `50
 Elizabeth Plier
 Janis Houston Powers `61
 Ernest Price, Jr. `39
 John Proctor `60

Paulette & J. Scott
 Provost `73
 Mr. and Mrs. W.E. Purdum
 Mary Vogl-Rauscher &
 Thomas Rauscher
 Philip Rauschert `76
 William Reupke `57
 Barbara & James Rice
 Lynn Wildner Richmond `82
 & William Richmond `81
 Paul Riesen III `34
 Mary Lou Miller Righellis `65
 Barbara & Charles Roberts
 Suzanne Roberts `02
 Greta Rogers
 Kathleen Stilin Rooney `85
 Sally Zellner Rossmiller `76
 Sylvia Rowe
 Richard Russo `72
 Nancy Santarella `76
 Barbara Duce Sarwar `56
 Lynn & Thomas Saxe
 Thomas Schilling
 Roland Schoen, Jr. `56
 Ann & Daniel Schubert
 Helen Burton Schuckel `56
 Frederick Schwertfeger `91
 Robert Sharp `53
 Michael Shohoney `79
 Laura & Charles Siemon
 John Singleton `75



Brad Ellis `86 and J. E. Pizarro `90 at the January Wayland Gathering at the Kohl Center in Madison, Wisconsin – the Badger Hockey team defeated Denver University.

Jim Downing `94

Twenty years ago, Jim Downing lived in Winnetka, Illinois, and had never really heard of Wayland Academy. He was in eighth grade, as was his twin brother, and Jim was standing at a crossroads in his life even if he didn't fully realize it at the time. "My brothers were in New Trier (High School) and my twin brother wanted to go to New Trier, which was a big school," he said. "I went to my parents and said 'I don't know if New Trier is the place for me.'"

Downing has a learning disability, and he was concerned that at New Trier he might get lost in the crowd, so he and his family sought alternatives. Happily, a friend of his mother had attended Wayland Academy, and a kid down the street was also enrolled there at the time; Jim spoke with both of them and eventually took a visit north to Beaver Dam. He considers it one of the most important decisions in his life that he eventually decided to enroll at Wayland.



Jim `94 and Tracy Downing and family

Because of his learning disability Jim started out in Wayland's Assisted Study program, similar to today's Coordinated Tutorial Program, which provided extra guidance during his first two years of high school. By the Spring semester of his sophomore year, though, he had worked so hard and done so well in school that his teachers decided he really didn't need Assisted Study anymore. He recalls, "So many teachers took an interest in me and helped me... and I remember that moving out of Assisted Study created a level of confidence in me that I'd never had in academics. It triggered this mindset - maybe I'm not stupid. Maybe if I work hard I can do things. It opened my eyes... I have a brain here. I can use it."

Jim has many fond memories of his time at Wayland, but that's what he remembers most. "It was really life changing. Teachers would say, 'Come and meet me before class or after class and we can go over those things you didn't understand.' And by senior year I was in a couple AP classes and a few honors classes."

Today, Jim is the Chief Compliance Officer at a trading firm and, already in possession of a Master's degree in accounting, is simultaneously attending law school and raising a family. One of the reasons he gives to Wayland, in spite of the many financial obligations he already has, is because he credits the school with making him the man he is today. "When I was there I played sports, saxophone, got involved in student committees. I'm still that way. I play sax, guitar, I sit on a few commissions in my village and professional committees."

Jim joined the alumni board at Wayland, and is grateful now that he's in a financial situation that allows him to donate both his time and his money to the school. "It's such a unique place for everyone who goes there. I hope my kids go there and get involved in the way that I did." It's one of the reasons Jim stays involved, but he also cites his father's words as one of the motivations that drives him to work with charities and donate to his alma mater. "My Dad was always big on telling me, 'Jim, when you're successful, you have to give back.'"

Heidi Hillmann Smith `85
Reginald Smith `81
Barbara & Stanley Smith
Pauline & Roger Sneath
Charlotte Snow
Alexandra Schwertfeger Solanki `95
Katharine & Simon Spanier
Carolyn Davis Spatta `52
Adrian Springer
Christopher Stanton `67

David Stelsel `00
Robert Strain `51
John A. Sturm `86
Gen Johansson Sullivan `82
Virginia Teas Gill `79 & William Gill
Marjorie Espersen Thornton `48
Robin Tornow `60
James Trapp
Robert Utke `51
Peter Vance `79

Dorothy VanderVeen
Anna-Katharina von Stauffenberg `04
Laura Baddaker Wade `46
Susan Brooks Wallace `64
Kurt Walters
Hugh Walton `79
Patricia Walton
James Wangerin `66
Lane Ware `57
Curt Warner `82



The Cheering Section

Emma McGraw Watson `59
 Jacqueline Henriksen Weber `58
 Marilyn & Frederick Webster, Jr.
 Karin & Hartmut Weege
 Beatrice & Alan Weiler
 Glenn Westlake `83
 Natalie Wetzel-Rasmussen `91
 Bryan Wheeler `76
 George White `62
 William Wiedenhoeft `74
 Mary Lou Miller Williamson `55
 Clinton Wilson `88
 Terry Witzke
 Shane Wohlrabe `73
 Tobias Wohlrabe `73
 Margaret & Robert Wolfe
 Wendy Zellner `77
 Brian Ziebell `79
 Anonymous
 Beaver Dam Women's Health Ltd
 The Erroll & Elaine Davis
 Charitable Gift Foundation
 Johnson School Bus Service, Inc.
 Maertz & Haase Construction, LLC
 Target Take Charge of Education
 Travel Centers of America L.L.C.
 Verlo Mattress Factory Store
 The Windhover Foundation

Sophomore Level

The Sophomore Level recognizes donors that contribute from \$50 to \$99 during the fiscal year.

Alice Sheridan Appen `60
 George Aubry

Rosemarie & Raymond Bacci
 Jane Richards Barker `74
 Elizabeth Cumbler Bartolini `67
 Margaret Johnston Birch `40
 Deborah & Andrew Bissonnette
 Karen Dunski Bleifuss `73
 Roger Boelio `64
 Elizabeth Brownell Bordner `64
 Bonnie Cady `63
 Carri Carl `81
 Robert Chesi `56
 Lue & David Clark
 Cynthia Blanchard Cooke `56
 Marc Cram `69
 Kathie Crandall `63

Frances Cunningham
 Margaret Hoyer Davies `50
 Kerry & William Dore
 Dorothy Ellis
 Mary & Phillip Esten `60
 James Exner `70
 Johanna Karsten Fabke `56
 Bonnie & Steven Fitzgerald
 Mary McPherson Fitzpatrick `69
 Suzanne & William Folland
 Dorothy & Karl Forsgren
 John Fromm III `63
 Mary Gale `67
 Catherine Garnett `66
 Laura Smith Germer `55
 Richard Gittus
 Cassie & Tyler Graham
 Donna Greenacre
 Sharon Grinyer
 Karen Amundson Haen `63
 Debbie & Jack Hanks
 Marilyn & Edward Hartig
 Emma Jane & James Henderson
 Beth Heuer `75
 Susan Schmidt Hick `60
 Weimer Hicks, Jr. `54
 Darby & Stanley Hintz
 Gregory Hofbauer `73
 Jan Wells Hooker `70
 Antonia Frederick Houston `77
 Nicholas Kavelaris `02
 Gloria Gilsinger Keehan `47
 Matthew Keil `92
 Jay Keil `81
 Katherine Kent
 Stephen Koenig `80



A group of young alums and friends having fun at the January Wayland Gathering at the Kohl Center in Madison, Wisconsin, where they watched the Badger Hockey team defeat Denver University.

Onnie Smith, Mother of Mary Smith `12

Three years ago, Onnie Smith's daughter, Mary, wasn't really interested in leaving home for high school. It's understandable. Becoming a boarding student and leaving friends, family, and familiarity behind for extended periods of time is a difficult choice for any adolescent to make. Onnie was firm, though, and said that Mary had to at least visit Wayland Academy. The final decision on whether or not she would enroll would be entirely up to Mary. But she had to visit. Onnie's brother attended Wayland in the 1970's, as did some of her friends and other family members, but Onnie herself didn't attend the school. She felt, though, that Wayland might offer Mary a better experience than the public schools in her area could.



Mary-Lucile Smith `12 and mother Onnie Smith

"We came to an admissions open house," Onnie recalled, "Mary toured the campus, and when we got home she said she wanted to go." Mary liked the small community at Wayland, the small class sizes, and she liked the diversity of the campus.

During every break through Mary's first two years of high school, Onnie would ask her daughter if she still wanted to go back to Wayland, and the answer was always, "Yes."

Onnie doesn't even ask anymore, but only because the answer has become so clear that the question is no longer worth asking. "I've just seen how Mary has blossomed at Wayland, and I've been so impressed with how the faculty and staff have worked with me, academically, athletically, and socially, to make the experience at Wayland a good one for her."

Onnie is especially pleased with the community that Wayland has been able to provide her daughter. "I adopted Mary as a single person, and it has always been just the two of us. Wayland has provided her a community beyond our nuclear family, and I think she feels safe there. I think she feels comfortable with herself. There are a lot of kids from all over the place with many different backgrounds." Mary loves and excels at sports, too, and Onnie says she appreciates the way Wayland approaches athletics. "They teach them teamwork, helping each other. I really like that."

Onnie also cites the mentor program as something she loves about Wayland. "(Athletic Director) Judy Hill, in particular, as a mentor, has been wonderful. One thing I like, personal to me, being a single parent, is there are other adults at Wayland that can give Mary advice and guidance beyond me. Sometimes children listen to other adults more than their own parents."

Mary's experience is the reason that Onnie contributes to Wayland financially, above and beyond the expenses associated with sending her daughter to school. "I really like the small community at Wayland, and I know how difficult it is for small schools to survive in these tough economic times. I also know that a lot of students there are receiving financial aid, and it's important to help the school so those students can continue to attend."

Ultimately, she is a mother who is grateful for Wayland Academy. "I'm so pleased at what the school has done for my daughter that I will support them for as long as I'm able to."



Mary helped the 2009-2010 Girls Basketball team register a school record of 18 victories (overall 18-4).

Susan `57 & Jon Labahn `57
 Theodore Landon `57
 Barbara & Wayne Larsen
 Barbara Lindeke `66
 Carolyn Lowry `04
 Stanley Marshall `56
 Julie & Lyle Mathias
 Tucker McNamara `56
 Joyce & Mark Messer
 Nancy Detweiler Metzger `68
 Jane & James Molstad
 Leslie Morris `56
 Kelly & Donald Neuert
 Anne Pflum
 Barbara Pierson
 Marilyn Lusher Plath `51
 June Smitz Powell `44
 Susan Jordan Preston `54
 Benjamin Rabata `08
 Tracy & Randall Rabata
 Ryan Rabata `12
 Rebecca Reedy Ogilvie `65
 Beverly Gunness Reese `63
 Blair Kendall & Scott Reif
 Martha Scott `75
 Steven Shane `90
 Joseph Skupniewitz `59
 Mary Vawter Smith `52
 Janet Bowman Sparks `62
 Nancy Howe Spivey `52
 Alice Stecker
 Susan Schneider Stewart `59
 Jo Ann & Glenn Stommel
 Kristine Stone-Rainey `75
 Amy & Michael Throndsen
 Darcy Trapp `03
 Jean Browne Turner `42
 Vaughn Turner



English teacher Martha Kesler H`08

Marguerite Van Ham
 Eva & Ben VanHorn
 Vincent Vilker `61
 Wilber Wedge `52
 Louise & Elvin Will
 Ann & David Wright
 Su Kyung Yun & In Sik Yu
 Loryn & Steven Zangwill
 A. A. Roedel Excavating, Inc.
 B & B Wood Floor Refinishing
 Design Plus, Inc.
 Westphal's

Freshman Level

The Freshman Level recognizes donors who contribute from \$25 to \$49 during the fiscal year.

Dena Lohse Bachman `97
 Lesley Bailey `69

Laura & Bruce Balfe
 Barbara Weiner Bartlett `43
 Rosemary & Fred Berger
 Marilyn Roethke Bolton `49
 Donna Brandrup
 Andrew Buchta `88
 Adam Bunkoske `09
 Frank Clark `99
 Judith Fisher Congedo `59
 Lisa Middleton Contois `93
 Karen Zitsman Daves `83
 Georgia Dorsey
 Lia Dorsey `88
 Elizabeth Gray Ellingson `32
 Barbara Lippert Fuhrman `67
 Oliver Fultz
 Marti Hunt Ginn `80
 Karin Johansson Hannusch `81
 Mark Harrison `85
 Janet & Edward Hessler



James Howell `50
 Darcie Hutchison
 Mary & Thomas Irwin
 Jerry James `50
 Kyle Jordan `95
 Brad Karl `90
 Suzanne Lamping `97
 Margaret Hendren Lee `50
 Edgar Lentz, Jr. `65
 Jean Elser Leritz `56
 William Luebke H `89
 Louise Thorne Matson `51
 Britt Forden McGarity `87
 Bradley Merker `73
 Kathie Gund Murphy `60
 Judith Easton Opsahl `53
 Ronnie Peters `58
 Lawrence Pitcher `00
 Weston Radford `03
 Emily Rhatican `04
 Linda Rhodes Salverson `63
 Dale Schoon `55
 Megan Wahlen Shine `85
 Catharine Bancroft Sloan `50
 Cecil Smith `49
 Sophia Stavropoulos Smocke `41
 Karen Sorenson `73
 Ruth Sproull
 Julie Morin Steilen `85
 Connie & Dave Stelsel
 Barbara Steen Stillman `58
 John Tidd `52
 Pamela Rawn Waller `64
 Robert Walton `06
 Kathryn Kading Wheeler `53
 Julie Ye
 Kit Ping & Cho Lam Yeung
 Schultz Bus Service Inc.

Greetings Level

The Greetings Level recognizes donors who contribute from \$1 to \$24 during the fiscal year.

Abdirizak Ali `10
 Erika Anuszewski `10
 Dezarae Avalos `10
 Sanden Averett `01
 Laura Bachmann `10
 Thomas Behrenbeck `10
 Michael Boucher `10
 Aaron Brown `10
 Nicole Nashban Cagan `79
 Megan Connell `10
 Jennifer Coonley-LaBonte `63
 Estelle de Vendegies `10



Chair of Math, Adam Yankay's class

Eleonore Deri-Sproull `10
 Nicholas Derr `10
 Allison Dewar `10
 Matthew Dicker
 Deanna & Gerald Disch H `93
 Maud Ellis `10
 Hendry Fang `10
 Austin Fiegel `10
 Nikos Frank `10
 Stephanie & Todd Franklin
 Marcelo Giebink `10
 Jane Goski `10
 Natalie Guse `10
 John Heeter `10
 Rickey Hendon `10
 Matthew Hernandez `10
 Stephanie Hill `10
 Tyler Hill `09
 Julia & Luke Houdek
 Yoo Kyung Hwang `10
 Se Yeon Jang `10
 Savanna Jensen `10
 Katharine Klein `10
 Nicholas Kosewski `10
 Thomas Kuenzi `77
 Wendy Kullas
 Henry Lardy `10
 Chung Bok Lee `10
 Seung Hyeon Lee `10
 Si Wan Lee `10
 Yean Ji Lee `10
 Cheuk Ming Ling `10
 Rachel Lizzadro-McPherson `10
 David Lorman `82
 Luqing Lu `10
 Hannah Mallegni `10
 Guttu Maskalo `10
 Audrey Murray Mayer `47
 Charles McIntosh `48
 Brianna Medley `10
 Mark Mesrobian `10
 Joshua Miller `10
 Jamie-Alden Mones `10
 Billal Muammar `10
 Rachel Mulder `99
 Jee Woo Park `10
 Seo Yeon Park `10
 Stephen Pepper `10
 Nancy Phillips `70
 Shane Preston `10
 Jenna Ptaschinski `10
 Haitham Qamhiyeh `10
 Jacqueline Redmer `95
 Cedric Rumongi `10
 Kayla Ruplinger `10
 John Santucci `10
 Nicolas Schaalma `08
 Austin Scholz `10
 Logan Schrank `05
 Nicholas Schubert `10
 Zachary Schwartz `10
 Margaret & Bruce Schwemmer
 Theodore Shank `10
 Qin Shao `10
 Paul Shapiro `10
 Joseph Steuer III `77
 Kerry & Paul Wolfgram
 Jake Wood `10
 Hua-Yue Xie `10
 Wiley Yao `10
 Jiwoo Yu `10
 Liqing Zhang `10
 Inter-Quest

Amount of Giving by Dollar amount per Class

Class of	Amount	Class of	Amount
`32	\$25.00	`71	\$7,810.48
`34	\$100.00	`72	\$6,919.84
`37	\$2,000.00	`73	\$34,615.00
`39	\$200.00	`74	\$27,984.00
`40	\$50.00	`75	\$3,252.00
`41	\$125.00	`76	\$31,160.00
`42	\$250.00	`77	\$1,597.84
`43	\$28,986.82	`78	\$4,275.00
`44	\$50.00	`79	\$8,526.67
`46	\$1,175.00	`80	\$475.00
`47	\$257,234.35	`81	\$875.00
`48	\$1,270.00	`82	\$3,265.00
`49	\$6,800.00	`83	\$20,375.00
`50	\$1,350.00	`84	\$1,000.00
`51	\$17,200.00	`85	\$8,643.50
`52	\$7,275.00	`86	\$6,600.04
`53	\$3,335.00	`87	\$11,125.00
`54	\$28,422.20	`88	\$962.57
`55	\$2,375.00	`89	\$3,500.00
`56	\$4,575.00	`90	\$7,097.72
`57	\$34,350.00	`91	\$800.00
`58	\$6,200.00	`93	\$1,025.00
`59	\$12,730.00	`94	\$4,425.00
`60	\$2,225.00	`95	\$1,185.00
`61	\$3,000.00	`97	\$1,645.00
`62	\$3,225.00	`99	\$545.00
`63	\$24,154.88	`00	\$925.00
`64	\$192,029.01	`01	\$210.00
`65	\$2,500.00	`02	\$450.00
`66	\$1,000.00	`03	\$130.00
`67	\$2,525.00	`04	\$275.00
`68	\$4,040.00	`05	\$10.00
`69	\$1,800.00	`08	\$10.00
`70	\$13,703.00	`09	\$35.00

In Memory of

The donor(s) is listed below the honoree.

Ben Bergum `99

Janet & Harvey Mosley
Rachel Mulder `99

Marilyn Chinander Bernatz `40

Corene & Philip Bernatz

Philip Buchanan `85

Sharon & George Cobb H`80

Betty & John Burnham

Elizabeth Burnham Wallman `71

Victoria Huntlicker Burton, faculty 1936-1937

Helen Burton Schuckel `56

Bill Connell

Stan Hintz Family

In loving memory of my parents,

Gloria & Roy Davis

Oliver Davis `59

Jody Greenwood Dicker `68

Matthew Dicker

Larry Forden

Britt Forden McGarity `87

Joyce C. Hoeft

Steven Hoeft `66

Leon Horn, grandfather of Amanda Tramm `10

Tracy & Randall Rabata

Stephen A. Katz

Barbara Burstein Katz `51

Susan Dee Kerr `52

William Kerr, Jr.

My mother, Raynice Lasher

Jeffrey Lasher `64

Malcolm McMillan `42

Debra & Carl Guse

Orin McMillan `33

Debra & Carl Guse

Ann Nicole Nelson `89

Jenette & Gary Nelson

George M. Newton `44

Kathryn Huth Newton `43

Kristie Cromheecke Palo

Paul Cromheecke `60

My wife, Peggy Plews

W. James Plews `50

David Proctor H`07

Daniel Barber `56

Mary Vawter Smith `52

Jim Schaalma

Nicolas Schaalma `08

Ronald Schmoller `54

George Pratt `53

Franklin Stecker

Alice Stecker

Mary Swan `25

Victor Falk III `63

Robin Tornow `60

Stoakley Swanson `52

Carol Swanson Wilson `47 &

Tom Wilson

My parents,

Mr. and Mrs. Herbert Tews

Barbara Tews Budd `53

Walter H. Thiede `43

Madalyn Conklin

J. Hobart Tucker

Jane & Burnett Sullivan `69

Robin Tornow `60

Leigh C. Van Etten

Susan Peterson `63 &

Archie Alexander

Mary Jo Wendorf

Stan Hintz Family

Kathy Schnur Witzke `57

Terry Witzke

Sol Wolfe `34

Victor Falk III `63

In Honor of

The donor(s) is listed below the honoree.

Diane Alpaugh H`83

Megan Kuehling `00
Jeffrey Kuehling `03

Luke Bacci `12

Kristina & Roger Bacci

Aaron Brown `10

Richard Perkins

Jennifer Mathias Carroll

Julie & Lyle Mathias

Selena Erdman `12

Barbara & Stanley Smith

Linda & Bob Esten `64 for their fine work

Sharon & George Cobb H`80

Tim Fischer `91

Erik Brandt `91

Graham Hick `92

Susan Schmidt Hick `60

Judy Hill H`08

Elizabeth Parker `72

Craig Hill H`06

Hilary & Sean Scott

Savanna Jensen `10

Suzanne Filut & Peter Jensen

Marriage of

John Jung and Judy Bock

Linda & Robert Esten `64
Darby & Stanley Hintz
Scott Reif Family
Rose Schaalma H`10

David Kasper H`81

Megan Kuehling `00
Jeffrey Kuehling `03

Paul Keller III

Elizabeth Parker `72

Martha Kesler H`08

Melissa & Scott Lowell

Richard H. Kimberly `54

Mary & John Sensenbrenner, Jr.

Joe Lennertz H`86

Elizabeth Parker `72



Jessica and Mike VanHaren `82, Mike is the President of the President of the Alumni Board

Karen S. Meyer `59

Susan Schmidt Hick `60

My children – Craig `82, Beth `88, and Matt `90

Camilla Nielsen

Anthony Pflum `89

Anne Pflum

Sylvia & William Richards

Jane Richards Barker `74

Rosina Samadani `85

Farhut & Ayaz Samadani

Judy Scherb & the girls of 1963

Karen Amundson Haen `63

Elizabeth Schmidt `64

Susan Schmidt Hick `60

Mary White Steinberg `37

Emma Jane & James Henderson

Levi Walton `06 and

Leslie Wakton `11

Patricia Walton

Vivian Washington `13

Sharon Grinyer

Steve Weiler `82

Beatrice & Alan Weiler

James Will, Jr. `76

Lorna & James Will

Serena Wolfe `07, Caitlin Wolfe `08, & Clare Wolfe `09

Margaret & Robert Wolfe

Wayland Alumni Association Board

Michael VanHaren `82

President of the Alumni Board
Brookfield, Wisconsin

Lizzy (Boucher) Lee `99

Okinawa, Japan

John DeVine III `87

Chicago, Illinois

Judy Glunz Diaz `81

Past President of the Alumni Board
Alexandria, Virginia

James R. Downing `94

Chicago, Illinois

John Florine `67

La Crosse, Wisconsin

Eric Gefvert `73

Elkhorn, Wisconsin

Kathryn (Jermain)

Lillesand `55

Madison, Wisconsin

Javier “J” Pizarro `90

Peoria, Arizona

Eva (Hartman)

Ptaschinski `83

Vice President of the Alumni Board
Beaver Dam, Wisconsin

Joseph Sackett `83

Libertyville, Illinois

Fred C. Schwertfeger `91

Wauwatosa, Wisconsin

Terrence Wilson `02

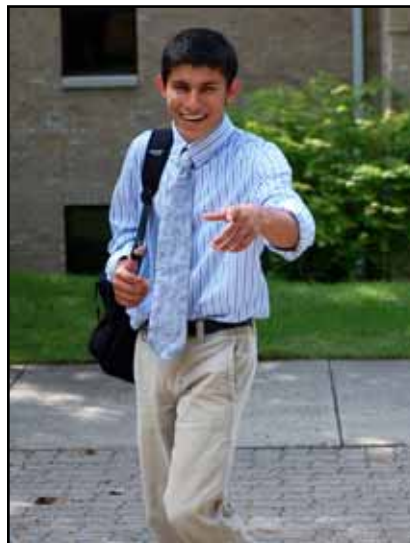
Chicago, Illinois

Gifts-in-Kind and Gifts-in-Time

Wayland wishes to acknowledge the many ways alumni, family, and friends donate to the Academy. Whether they made an auction donation, assisted with an alumni function, helped with the Fall/Spring Family Weekends, or volunteered at the Spring Gala and Auction, Wayland is truly thankful for their commitment to the Academy.

Cathy Adduci
 Frederick Bishop `57
 Ellen & Kevin Bruning `79
 Betty Clark
 Harry Cody `58
 Lisa & Michael Derr
 John DeVine `87
 Judy Glunz Diaz `81
 James Downing `94
 Linda & Robert Esten `64
 Jeanne & John Faber
 Victor Falk III `63
 Lisa & Scott Fitzgerald
 John Florine `67
 Todd Franklin
 Eric Stanton Gefvert `73
 Debra & Carl Guse
 Carol Gustafson
 Michelle Hebl `87
 James Janik `74
 Brian Jindra
 Scott Jones `63
 David Kasper H `81
 Richard Kimberly `54
 Shirley & Jeff Kitchen
 Robert Kuehling
 Heather Genereaux Kuenzi `90
 Cynthia & Michael Lardy
 Elizabeth Boucher Lee `99
 Kathryn Jermain Lillesand `55
 Scott Lowell
 William Luedke IV `70
 John McKinstry H `10
 Christopher Mientus
 Kimberly & Rodney Miller
 Mackenzie Miller `11
 Connie & John Moran
 Janet & Harvey Mosley
 Don Neuert

Hannah Neuert
 Elizabeth Parker `72
 Kevin Peterson `69
 Susan Peterson `63
 Javier Pizarro `90
 E.J. Plesko
 Allen Proctor `70
 Pamela Pryme
 Eva Hartman Ptaschinski `83 &
 Thomas Ptaschinski
 Tracy & Randall Rabata
 Kathy & Curtis Radford `73
 Mark Rauschert `83
 Karl Rauschert `47
 Holli & Robert Ruegger
 Joseph Sackett, Jr. `83
 Rosina Samadani `85
 Judith Ronin Scherb `63
 Ann & Daniel Schubert
 Jo & Mark Schumann
 Frederick Schwertfeger `91
 Hilary Bishop Scott
 Cathy Seippel
 Georgianna Starz
 Burnett Sullivan `69
 Julius Temkin
 Tracy & Troy Thompson
 Leann & Paul Tramm
 Michael VanHaren `82
 Mary Vogl-Rauscher
 Darryl Voigt
 Julie & Dean Wahl
 Terrence Wilson `02
 Judith Pickard Yeakel `47
 The Boldt Company
 Sodexo Facilities



Mihai Schnell-Harrison `12

Wayland Academy Parents Council

Ellen and Kevin Bruning `79

Co-Chairs of the Parents Council
 Crystal Lake, Illinois

Tracy and Randy Rabata

Vice-Chairs of the Parents Council
 Beaver Dam, Wisconsin

Leann and Paul Tramm

Co-Secretary of the Parents Council
 Beaver Dam, Wisconsin

Cindy Lardy

Montello, Wisconsin

Connie S. and John Moran

Chicago, Illinois

Janet Mosley

Sun Prairie, Wisconsin

Ann and Dan Schubert

Beaver Dam, Wisconsin

Diane Siekman

Appleton, Wisconsin

Julie Wahl

Reeseville, Wisconsin

The 2009-2010 Parents & Grandparents Fundraising Challenge

Raised
\$156,172

Goal
\$150,000

Thomas Platt `71

Tom Platt was at one time the sort of student who liked to dabble in the chemistry lab in the basement of the old Linfield Hall. Chemistry was his favorite subject, but one of his favorite aspects of chemistry was not on the syllabus: “Things that go boom!” That became an independent study project. Independent in the sense that there wasn’t much supervision when he and his friends would make their own chemical concoctions to see if they could blow holes in the concrete floor of the basement. They could.



Tom `71 and Wendy Platt

Tom is now Dr. Platt, a physician specializing in internal medicine in Grand Rapids, Michigan, where he also serves as the medical director of Cherry Street Health Services. The line between creating explosions in the basement of Wayland’s science building and becoming a physician isn’t necessarily the clearest, but Dr. Platt now points to his experiences at Wayland as “the most important formative years of my life. That is an age when you go from childhood to adulthood, and the fact that that occurred for me at Wayland... I’ve always appreciated that. It offered me opportunities I couldn’t get elsewhere.”

In particular, Dr. Platt recalls how grateful he was for the constant faculty support he had at Wayland. “The wonderful thing about Wayland is that the doors don’t close at 3,” he said. “The faculty are always available. If there was a problem in the evening they would invite you in and work with you.”

At the root of Tom Platt’s donations to Wayland are two primary sources: gratitude and hope. Even as a student he recalls wanting to be able to do something for the school, for the science building in particular, and to some day, when his means allowed, do things such as purchase a new telescope for the facility.

His means are now sufficient that he has been able to fulfill the desire of his younger self to give back to Wayland financially. In addition to giving out of gratitude for what Wayland gave him, he also gives to the school mindful of the current generation of Wayland students. “I think of the students that are there now. This is their opportunity for growth. I want them to have the same opportunities I had. The future of the world is dependent on future generations coming out with the same ideals that Wayland provided me and my classmates.”

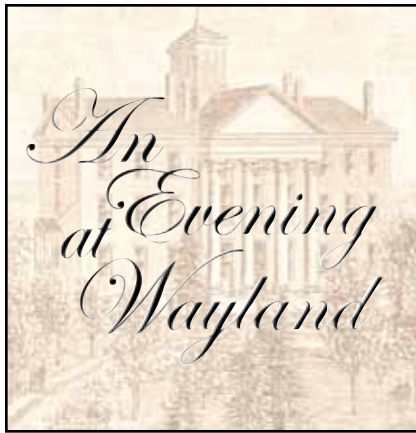
He supports the school because he considers it to be “part of my family. The faculty, the institution, the friends that I made. You can’t get that experience in another institution.”



Dean of Students Paul Keller teaching economics



Math Teacher Rebekah Moe



Spring Gala and Auction

The list of names in this section includes all who donated cash or auction items, and those who purchased auction items at Wayland's largest fundraising event of the year – An Evening at Wayland: the Spring Gala & Auction. The 2009-2010 Spring Gala and Auction generated \$72,378 for the Academy to support our Fine Arts and the Student Activities Fund.

Martha Alexander `74
 Donald Augustine `54
 Rosemarie & Raymond Bacci
 Kristina & Roger Bacci
 Nancy Thomson & David Bachmann
 Abisola & Olushola Bakare
 Ardeth Bayley
 Candace Beckman
 Julia & Thomas Behrenbeck
 Monty Belmer
 Stephanie & Frederick Bishop `57
 Nancy & Kris Boucher H`90
 Angie & Roy Brandell
 Catherine Best & Russell Brandl
 Ellen & Kevin Bruning `79
 Betty & Alan Clark `49
 Lue & David Clark
 Lana & Michael Clark
 Janice & Andrew Coulson `64
 Judith & August Crivolio
 Connie & Raymon Darling
 Mary & Donald Derr

Lisa & Michael Derr
 Linda & Robert Esten `64
 Susie Everson
 Gail & Charles Fakes
 Victor Falk III `63
 Rebekah Faust `11
 Maxine & James Ferron
 Connie & Ric Fiegel
 Paul Frank
 Stephanie & Todd Franklin
 Tara Franklin
 Susan & Douglas Ganske
 Drews Gossel `00
 Dorothee & Karl Gossel
 Donna Greenacre
 Patricia Grodecki
 Debra & Carl Guse
 Diane & Craig Haberman
 Debbie & Jack Hankes
 Vivian & William Heaney
 Michelle Hebl `87
 Michaelle & John Heeter
 Judy H`08 & Craig Hill H`06
 Darby & Stanley Hintz
 Ulla Hogg
 Julia & Luke Houdek
 Susan & James Janik `74
 Suzanne Filut & Peter Jensen
 Christa Johnson
 Jennifer Johnson `04
 Sujatha & Laxman Kailas
 John Keil `50
 Nathalie & Paul Keller
 Katherine Kent
 Karen H`08 & Richard Kimberly `54
 Shirley & Jeff Kitchen
 Terrill Knaack `68
 Richelle Eliason Kruse `87 &
 Timothy Kruse `87
 Cara Zilisch Landolt `89
 Cynthia & Michael Lardy
 Randall Lawton `63
 Onnie Leach Smith
 Jeneen Lomax
 Melissa & Scott Lowell
 William Luedke IV `70
 Linda & Thomas Lutes
 Rhonda Marcucci
 Beverly & Alan Martens
 Laura McClone
 Tami Mientus
 Kimberly & Rodney Miller

Diane Eliason Misina `85 &
 John Misina
 Janet & Harvey Mosley
 Kelly & Donald Neuert
 Matthew Nielsen `90
 Mary & Kenneth Ostermann
 Elizabeth Parker `72
 Cara Pepper
 Shannon & Eric Peters
 Nancy & Gary Petersen
 Susan Peterson `63 &
 Archie Alexander
 Barbara Pierson
 Margaret & Angel Pizarro
 Javier Pizarro `90
 Elizabeth Plier
 Robin Garard & Scott Posnanski `86
 John Powless
 Allen Proctor `70 & Gail Walter
 Mr. and Mrs. W.E. Purdum
 Tracy & Randall Rabata
 Kathy & Curtis Radford `73
 Mary Vogl-Rauscher &
 Thomas Rauscher
 Eileen & Karl Rauschert `47
 Cynthia & Mark Rauschert `83
 Betty & Saul Rosenbaum
 Holli & Robert Ruegger
 Farhut & Ayaz Samadani
 Rosina Samadani `85
 Rose Schaalma H`10
 Judith Ronin Scherb `63 &
 Bert Scherb
 Jo & Mark Schumann
 Margaret & Bruce Schwemmer
 Hilary & Sean Scott
 Penny & Craig Seaver
 Georgianna Starz



Trustee Betsy Parker `72, Chef Carol Gustafson, and Gerardo Cumpiano



Members of the Parents Council: Leann Tramm, Janet Mosley, and Cindy Lardy

Jeremy Starz `97
 Brenda & Dennis Steinkraus
 Connie & Dave Stelsel
 Jane & Burnett Sullivan `69
 Nancy Swanson
 Nichol & Craig Swenson
 Virginia Teas Gill `79 & John Gill
 Julius Temkin
 Leann & Paul Tramm
 Lois & Werner Tramm
 Dona & Larry Turner
 Vaughn Turner
 Dorothy VanderVeen
 Michael VanHaren `82
 Marilyn & Roger VanHaren H`84
 Bethann & Thomas Vaubel
 Sue & Darryl Voigt
 Julie & Dean Wahl
 Kurt Walters
 David Walton
 Patricia Walton
 Karin & Hartmut Weege
 Judith Pickard Yeakel `47
 Loryn & Steven Zangwill
 Jianhong Che & Xiaogang Zhang
 Anonymous
 A. A. Roedl Excavating, Inc.
 AmericInn
 Arby's
 Augustana College
 B & B Wood Floor Refinishing
 Beaver Dam Country Club
 Beaver Dam Women's Health Ltd
 Beloit Snappers
 Best Western Campus Inn
 Black Waters Coffee Co.

Burger King
 Camp Nicolet Inc.
 Carleton College
 Carroll College
 Cave of the Mounds
 China Palace
 Cliff Dwellers Condominium Resort
 Coe College
 Colorexhibition
 Concordia University
 Culver's Restaurant
 Dos Gringo's Mexican Restaurant
 Drake University
 Drs. Esser, Krueger & Borja
 Duke University
 Eastman Kodak Company
 Ebert's Greenhouse Village
 Edgewood College
 Floral Expressions
 Gene's Beaver Floral
 Glasgow Photography
 Gordon Fleisch Company Inc.
 Green Bay Packers
 Heartland Litho
 Heidel House Resort
 Hillsdale College
 Horicon Bank
 Inter-Quest Corp.
 Jimmy John's Subs
 Johnson School Bus Service, Inc.
 Julie Zahn Photography
 Kalamazoo College
 Kestrel Ridge Golf Club
 Kwik Trip's of Beaver Dam
 Lincoln College
 Lost Lake Acres Greenhouse

Loyola University
 Luther College
 Lynn University
 Madison Mallards
 Malibu Tan, LLC
 Marian University
 McKinstry's Home Furnishing Inc.
 Mercyhurst College
 Milwaukee Brewers Baseball Club
 Milwaukee Bucks
 Milwaukee Public Museum
 Mount Olympus
 Neuman Pools Inc.
 Nielsen Massey Vanillas Inc.
 Nike Tennis Camp
 Noah's Ark Family Park Inc.
 Old Hickory Golf Club
 Papa Murphy's Pizza
 Park Plaza Pizza, Inc.
 Regis University
 Rock River Hills Golf Club
 Salon 311
 Seippel Family Foundation Inc.
 Shedd Aquarium
 Shier Family Clinic of Chiropractic
 Silica Appliance & TV
 Skalitzky Jewelers, Inc.
 Sodexo Kitchen
 Sodexo Maintenance
 Spa Renew & Permanent Cosmetics
 St. Norbert College
 Stanford University
 SubWay Sandwiches and Salad
 Super 8 Motel
 Susquehanna University
 Sybaris
 Syracuse University
 The Boldt Company
 Tonn Pest Control
 Travel Leaders
 Verlo Mattress Factory Store
 Walgreen's
 Walt Disney World Co.
 Ward-Brodt Music Company
 Washington University
 Weigel Broadcasting Co.
 Westphal's
 White Gull Inn
 Wisconsin Aviation, Inc.

WAYLAND ACADEMY Board of Trustees 2009-2010

Susan A. Peterson `63

Trustee Chair
President and CEO
The Communication Center
Washington, D.C.

James L. Janik `74

Vice Chair
President and CEO
Douglas Dynamics, LLC
Milwaukee, Wisconsin

Elizabeth W. Parker `72

Vice Chair
President
Caribe Direct, Inc.
San Juan, Puerto Rico

Allen J. Proctor, Ph.D. `70

Vice Chair, Treasurer
Financial Services Consulting
Worthington, Ohio

Mark C. Rauschert `83

Secretary
President Midwest Control
Products Corporation
Bushnell, Illinois

Robert L. Esten `64

Ex Officio President
President
Wayland Academy
Beaver Dam, Wisconsin

Harry "Skip" Cody `58

President
Multicolor
Specialites, Inc.
Cicero, Illinois

Victor Falk `63

Retired
Key Largo, Florida

Michelle Hebl `87

Professor
Rice University
Department of Psychology
Houston, Texas

Richard H. Kimberly `54

President
Kimberly Consulting, LLC
Washington, D.C.

Robert W. Kuehling

Member
Kuehling & Kuehling, LLC
Madison, Wisconsin

Scott Lowell

Partner
Lowell Management Services, Inc.
Lake Geneva, Wisconsin

William T. Luedke IV `70

Partner
Bracewell - Giuliani LLP
Houston, Texas

John B. McKinstry

Retired
Beaver Dam, Wisconsin

E.J. Plesko

President
E.J. Plesko &
Associates, Inc.
Madison, Wisconsin

Rosina Samadani, Ph.D. `85

President
Capella Advisors
New York, New York

Judy Ronin Scherb `63

Director of Financial Services
Ameritus
Chicago, Illinois

Hilary Bishop Scott

Trustee
Stephanie L. and Frederick E. Bishop
Family Foundation
Chicago, Illinois

Georgianna S. Starz

Owner/Executive Director
Camp Nicolet, Inc.
Eagle River, Wisconsin

Burnett G. Sullivan `69

Retired
Mahtomedi, Minnesota

Michael C. VanHaren `82

Ex Officio Alumni Board President
Data Sales Consultant
Midwest Region Quad Direct
Brookfield, Wisconsin

Trustee Emeriti

Frederick E. Bishop `57

Executive Vice President
Bishop Consulting Services of
Illinois, Inc.
Glencoe, Illinois

R. Scott Jones `63

Jones Consulting Group, Inc.
Red Wing, Minnesota

Karl A. Rauschert `47

Retired President
Midwest Control Products, Inc.
Bushnell, Illinois

Judith Pickard Yeakel `47

Retired
Langley, Washington



Susan A.
Peterson `63



James L.
Janik `74



Elizabeth W.
Parker `72



Allen J.
Proctor `70



Mark C.
Rauschert `83



Robert L.
Esten `64



Harry "Skip"
Cody `58



Victor
Falk `63



Michelle
Hebl `87



Richard H.
Kimberly `54



Robert W.
Kuehling



Scott
Lowell



William T.
Luedke IV `70



John B.
McKinstry



E.J.
Plesko



Rosina
Samadani `85



Judy
Ronin Scherb `63



Hilary
Bishop Scott



Georgianna S.
Starz



Burnett G.
Sullivan `69



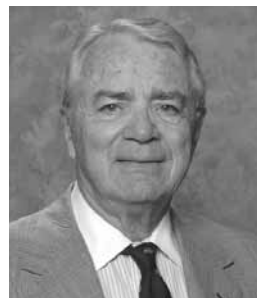
Michael C.
VanHaren `82



Frederick E.
Bishop `57



R. Scott
Jones `63



Karl A.
Rauschert `47



Judith
Pickard Yeakel `47

Wayland Academy's Class of 2010!

Abdirizak Ali

Beloit College
Beloit, Wisconsin

Erika Anuszewski

The University of Tampa
Tampa, Florida

Dezarae Avalos

University of Rochester
Rochester, New York

Laura Bachmann

Boston University
Boston, Massachusetts

Thomas Robert Behrenbeck

Southwestern University
Georgetown, Texas

Michael Boucher

University of Wisconsin, Eau Claire
Eau Claire, Wisconsin

Aaron Brown

University of St. Thomas
St. Paul, Minnesota

Megan Connell

Creighton University
Omaha, Nebraska

Estelle de Vendegies

Marymount Manhattan College
New York, New York

Ellie Deri-Sproull

Framingham State College
Framingham, Massachusetts

Nicholas Derr

University of Wisconsin, Madison
Madison, Wisconsin

Allison Jane Dewar

Rhodes College
Memphis, Tennessee

Maud Ellis

Pitzer College
Claremont, California

Hendry Fang

Pepperdine University
Malibu, California

Austin Fiegel

Westminster College
Fulton, Missouri

Nikos Frank

Lawrence University
Appleton, Wisconsin

Marcelo Giebink

Westminster College
Fulton, Missouri

Jane Goski

St. Olaf College
Northfield, Minnesota

Natalie Guse

Mount Mary College
Milwaukee, Wisconsin

John Heeter III

Millikin University
Decatur, Illinois

Rickey Hendon

Bradley University
Peoria, Illinois

Matthew Hernandez

Syracuse University
Syracuse, New York

Stephanie Hill

Lake Forest College
Lake Forest, Illinois

Yoo Kyung Hwang

Northwestern University
Evanston, Illinois

Se Yeon Jang

University of Wisconsin, Madison
Madison, Wisconsin

Savanna Jensen

St. Olaf College
Northfield, Minnesota

Katharine E. Klein

Ripon College
Ripon, Wisconsin

Nicholas R. Kosewski

University of Minnesota, Twin Cities
Minneapolis, Minnesota

Henry Lardy

University of Wisconsin, Madison
Madison, Wisconsin

Chung Bok Lee

The University of the Arts
Philadelphia, Pennsylvania

Seung Hyeon Lee

University of Minnesota, Twin Cities
Minneapolis, Minnesota

Si Wan Lee

*Embry-Riddle Aeronautical
University - Florida*
Daytona Beach, Florida

Yean Ji Lee

Binghamton University
Binghamton, New York

Cheuk Ming Ling

Kent State University
Kent, Ohio

Joe Liverseed

Reed College
Portland, Oregon

Rachel Michelle

Lizzadro-McPherson
Lawrence University
Appleton, Wisconsin

Luqing Lu

University of Wisconsin, Madison
Madison, Wisconsin

Hannah Mallegni

Colorado State University
Fort Collins, Colorado

Guttu Maskalo

St. Olaf College
Northfield, Minnesota

Brie Medley

Madison Area Technical College
Madison, Wisconsin

Mark Mesrobian

University of Redlands
Redlands, California

Joshua Luc Miller

United States Military Academy
West Point, New York

Jamie-Alden Mones

Grand Canyon University
Phoenix, Arizona

Billal Muammar

Joliet Junior College
Joliet, Illinois

Justin Pappano

Marquette University
Milwaukee, Wisconsin

Jee Woo Park

Oxford College of Emory University
Oxford, Georgia

Seo Yeon Park

Wellesley College
Wellesley, Massachusetts

Stephen Pepper III

Illinois Institute of Technology
Chicago, Illinois

Shane Preston

Southern Illinois University, Carbondale
Carbondale, Illinois

Jenna Ptaschinski

Davidson College
Davidson, North Carolina

Haitham Hazam Qamhiyeh

Iowa State University
Ames, Iowa

Cedric Rumongi

Deferring

Kayla Ruplinger

Eckerd College
St. Petersburg, Florida

John Santucci

Southern Illinois University, Carbondale
Carbondale, Illinois

Austin Scholz

University of Wisconsin, La Crosse
La Crosse, Wisconsin

Nicholas Schubert

Lawrence University
Appleton, Wisconsin

Zachary Schwartz

St. Olaf College
Northfield, Minnesota

Theodore Shank

Franklin and Marshall College
Lancaster, Pennsylvania

Qin Shao

*Pennsylvania State University,
University Park*
University Park, Pennsylvania

Paul Shapiro

Deferring

Jake Wood

University of Wisconsin, Stevens Point
Stevens Point, Wisconsin

Huayue Xie

Smith College
Northampton, Massachusetts

Wiley Yao

Marquette University
Milwaukee, Wisconsin

Jiwoo Yu

*University of Illinois at Urbana-
Champaign*
Urbana, Illinois

Liqing Zhang

*The University of Alabama at
Birmingham*
Birmingham, Alabama